

Assessment Of The Lewiston-Elk City Trails



Elk City in 1904

Courtesy of the University of Idaho Library Special Collections and Archives. PG 5-116-1

The Mapping and Location Of The Elk City Trails And Associated Sites
in Idaho, Nezperce, Lewis and Clearwater Counties.

For

The Idaho County Historic Preservation Commission

&

The Idaho State Historical Society

Assessment prepared by James G. Huntley

130 Grangeville Truck Route
Grangeville, Idaho 83530

October 2016 to November 2017

INTRODUCTION

From 1867 to 1934 the General Land Office contracted with private land surveyors to survey and subdivide the townships in Idaho, Clearwater, Lewis and Nez Perce Counties. These contracts also required the recording of features on the landscape. Over a century later it is the features requirement that allows the researcher to locate the positions of cabins, fences, fields, trails and wagon roads on maps and on the ground.

This writer began plotting these historic routes on modern maps because of their historic contribution to the early development of the Camas Prairie and the surrounding mountains, and valleys of Central Idaho. In addition it is hoped that visual records of these routes will become of interest to the general public. This is the third in a series of at least six assessments that are planned over the next several years.

This assessment deals with the Lewiston-Elk City Trails which were used from 1861 to 1932 when the road up the South Fork of the Clearwater was completed. This document covers in detail the routes from Lewiston to a common junction with the South Nez Perce trail; a short distance southeast of the town of Clearwater.¹

The northern route passed through the areas where some three and one half decades later the towns of Culdesac, Ruebens, Craigmont (Ilo & Volmer), Kamiah, Kooskia and Stites, would be located.

\ The southern route passed through what is now Cottonwood, where the Cottonwood Way Station was constructed in 1861-62. At a place now known as Harpster, one William Jackson built a toll bridge and small station in 1861-62, which a few years later was owned by a man named Clindinning, but the place was burned down by Indians in 1877 and never replaced. L, P, Brown laid out the town of Brownsville in 1893, but the Post Office retained the name of Harpster, named after Abe Harpster an early pioneer.² The towns of Morrow and Westlake did not exist until after 1887.

The first 25 miles of the northern trail became a major wagon road to Kamiah, River City (Greer), Pierce City and Oro Fino. At that time Oro Fino was located some two miles south of Pierce. The total distance from Lewiston to Elk City was between 100 and 116 miles, the northern trail being sixteen miles longer than its cousin to the south.

It should be noted that by 1870 surveyor David P. Thomson noted the first 30 plus miles of the northern route as a "wagon road." It seems that Colonel William Craig and Jacob Schultz used this route in 1861 when they built a Ferry across the Clearwater River at the present site of Greer, Idaho. They went into business ferrying miners across the Clearwater River, which explains why it only took a few years to turn a trail into a wagon road.³ In addition the southern route also became an early wagon road, and in 1862 the first stage line was opened that served the Cottonwood Station and the Mount Idaho Station.⁴

1 Pioneer Days In Idaho County, Sister M. Alfreda Elsensohn, Volume #1, page 178,

2 Pioneer Days In Idaho County, Sister M. Alfreda Elsensohn, Volume #1, Pages 406-409.

3 History of Greer, Idaho, Researched and Written by Louise Stockard Hodge.

4 Illustrated History Of North Idaho, Western Historic Publishing Company, 1903, page 389.

Elk City was the first city founded in Idaho County when a party of some twenty men led by L. B. Monson did not heed the warnings of a Nez Perce Indian and crossed the South Fork of the Clearwater River at the present site of Stites. This party went over the Southern Nez Perce Trail to the Elk Creek Valley. Monson was accompanied by Moses Milner, who would become a legend, and who the following year, would build a trading post at Mount Idaho. The first Claim in the Elk City area was dated June 14, 1861 in the mining district of Union, apparently named by Union sympathizers.

James and William Galbraith started an express and by the end of the placer season of 1862 had shipped some \$933,742 in gold dust out of the district. At today's prices that amount of gold would bring about \$70,000,000.⁵ A much more conservative estimate is: between 1861 and 1932 some 19,183,000 in gold was shipped out of the Elk City area.⁶



Lewiston, Idaho 1862, Belived to be first picture taken of the town.
Courtesy of the University of Idaho Library Special Collections and Archives PG 5-007-4a

5 Pioneer Days In Idaho County, Sister M. Alfreda Elsensohn, Volume #1, page 159

6 Pioneer Days In Idaho County, Sister M. Alfreda Elsensohn, Volume #1, page 177.

METHODOLOGY

These trails were first noted and plotted between 1869 and 1893 when Surveyors, Allen Thompson 1869, David P. Thompson 1872, John B. David 1880 and Edson Briggs 1893, subdivided the Townships and the Nez Perce Reservation that make up the land base of North Central Idaho. This writer then plotted each trail on modern contour maps using the original notes of the early surveyors.

The plotting was done using a Terrain Navigator program which allowed the recording of 1927 NADCON coordinates. The 1927 coordinates were then converted to 1983 NADCON using North American Datum Conversion 2.11. In the future anyone wishing to locate these routes on the ground can simply use a GPS unit to find any given position.

Accuracy of the coordinates is dependent on the map being used as the township, range, and section lines shift slightly depending on the year the map was produced. However an accuracy of less than ten feet should be attainable on the ground by starting at any given section corner and following the original distances up or down the section lines.

Points of historic importance and interest were also located using the original survey notes and descriptions found in historic texts and GLO homestead descriptions.

PHYSICAL SETTING

The Elk City Trail began in Lewiston, Idaho at an elevation of some 737 feet, it went up the east side of Lindsay Creek and entered Township 35N, R5W some 500 feet east of the section corner for section 4 & 5. It then went southeast to approximately 1000 feet west of the mouth of Sweetwater Creek, where the trails forked. The southern route bearing south up McCormack Ridge and the northern route bearing east up Lapwai Creek.

THE NORTHERN ROUTE

The northern route followed the Creek up stream to Culdesac where it turn northeast up a small ridge, leaving the creek, the trail turned southeasterly climbing up to the prairie above, reaching an elevation of some 3520 feet. The parent soils in the first 20 miles appear to be Columbia River Basalt flows.

Just north of the present day site of Reubens, the trail entered the northern part of the Camas Prairie and continued southeast, past present day Craigmont where it reached an elevation of 3800 feet. Continuing southeasterly the Trail Crossed Lawyer's Canyon approximately five miles east of present day Highway 95. At this point the trail turned easterly and continued in that general direction until it reached a point approximately 0.75 miles northwest of the Big Butte School, where it turned Northeast. The trail then followed the hydrological divide between Lawyers Creek and Seven Mile Creek until it entered Lawyers Canyon some two miles west of Kamiah, Idaho.

From present day Reubens to Kamiah the trail crossed the northern portion of the Camas Prairie which is part of the 1700 square mile Clearwater Plateau, and is characterized by Columbia River Basalt flows. Approximately 30-40 million years ago, during the mid-Tertiary period, three basalt flows (*Imnaha, Grand Ronde, and Saddle Mountain*) extruded east from vents in Oregon and Washington resulting in a succession of faulted basalt layers. The soils along this portion of the trail vary with the topography and elevation changes, but are best described as gently sloping to hilly uplands, moderately sloping to steep *canyons* and nearly level bottom lands. (*Caastelin 1976.*)



The Spalding Cabin Built-1837-Existed until-1902
Courtesy of the University of Idaho Library, Special Collections and Archives PG 5 013-16

At Kamiah the trail to Elk City tied into the Southern Nez Perce Trail and turn southerly up the west side of the Middle Fork of the Clearwater River to Kooskia, some 8 miles up river. The elevation on the trail at this point is 1277 feet. From Kooskia the trail continued up the South Fork of the Clearwater River, crossing the river three times before reaching present day Stites. The Trail left the river at this point; climbing the hydrological divide just south of Rabbit Creek until it reached the common junction with the Cottonwood branch of the Elk City Trail. The elevation at this point is 2800 feet. The Southern Nez Perce trail continues on over Corral Hill (5800 feet), China Point (6100 feet), Mountain House (6400 feet), Elk Summit (6386 feet) and at Elk City the elevation is 3962 feet.

The soils up the western side of the Clearwater are a combination of shallow Columbia River Basalt flows capping the Idaho Batholith. The River breaks leading eastward to the town of Clearwater are probably best described as rolling uplands whose parent materials are granite, gneiss, schist, and quartzite. The soils continuing to elk city are also made up of this same material (*South Fork Clearwater River Basin, Description by Idaho Water Board.*)

THE SOUTHERN ROUTE

The southern trail/wagon road ascended the hydrological divide between Mission Creek and Webb Creek and attained an elevation of some 4400 feet before crossing Mission Creek at 4200 feet. The trail/wagon road then crossed the North Fork of Willow creek some 4900 feet southwest of the Talmaks Campground. It crossed main Willow Creek at the town of Morrow before crossing Lawyers Creek some 300 feet south of the present day road.(Elevation 3960 feet).

At a distance of 5000 feet northwest of Foster's Grave the Trail/wagon road reached a elevation of 4550 feet. The Trail/wagon road descended into Cottonwood and the trail turned east some 3460 feet southeast of the present day south entrance into Cottonwood. The trail gradually turned southeast and crossed the section line 2640 feet north of the Denver Cemetery. It then continued easterly passing 1500 west of the Fairview Cemetary and continued east crossing Butcher Creek at an elevation of 2465 feet. A short distance after crossing Butcher Creek the trail turned Northeast going down the divide between China Creek and the South Fork of the Clearwater River.

The trail then Crossed the South Fork of the Clearwater at present day Harpster. (Elevation 1550 feet). After Crossing the South Fork the trail ascended the hydrological divide between Sears Creek and Wall Creek and crossed Wall Creek at an elevation of 2278 feet. The trail continued northeast until connecting at the common junction of the southern Nez Perce Trail, southeast of the town of Clearwater at an elevation of 2800 feet.

The geology and the soils making up the landscape are the same as those along the northern route that have already been described.

HISTORIC OVERVIEW/CHRONOLOGICAL TIME LINE

1805-06: The first Euro-Americans to pass through Idaho were the Lewis & Clark expedition in 1805. In 1805 they ventured through Idaho, Clearwater and Nezperce Counties on their way to the Pacific Ocean and in 1806 on their return trip they passed through Lewis County as well.⁷

In 1806 the expedition crossed the Clearwater River some thirteen miles above the Potlatch River, ascended Angel Ridge, dropped down off this ridge through the site of present day Peck Idaho, and camped the night of May 7, 1806 at the forks of Canyon Creek and Little Canyon Creek. On May 8th they climbed the ridge just north of the Little Canyon Creek and traveling only some four miles camped at the head of a small stream that flows north to the Clearwater River. On May 9th they traveled some six miles south along the trail that went from Kamiah to Canoe Camp on the Clearwater River and camped at Twisted Hairs Camp. On May 10, 1806 they traveled some 20 miles along this same trail and camped on Lawyers Creek some 4 miles west of the mouth of the stream, where they remained for several days.⁸

1806, May 13: The expedition moved down Lawyers Creek to the Middle Fork of the Clearwater River, where they spent the night. The following day they crossed the river and set up a camp on the north side.

May 27: Ordway, Frazer and Wisner were sent to gather salmon. The route they took has been a matter of interpretation for decades. I shall discuss my interpretation of Sgt. Ordway's notes and those of Defenbach and Russell when I assess the Kamiah-North Fork of the Clearwater (Canoe Camp) Trail at a later date.

(When this writer assessed the Lewiston-Mountain House Wagon Road I footnoted Pioneer Days in Idaho County, Volume 1, page 3. This foot note about what Defenbach believed, was proven wrong in 2002 when Steven Russel, PH.D, Associate professor, Iowa State University published "Ordway's Salmon Fishing Expedition.

When assessing the Lewiston-Florence Trail, I noted Russell's publication as disagreeing with Defenbach. After plotting the old trails based on the notes of early land surveyors and further study of the written histories of Idaho I find that neither person is entirely correct.

1811: Donald McKenzie with four men came across the Seven Devils mountains, down the little Salmon River to Riggins. He continued down the Salmon River and at what is now known as Lucile he found McClellan, who had also come down the Little Salmon River just ahead of McKenzie. At this point McKenzie took control of the group and proceeded down river to Whitebird where they struck an old Indian trail that took them past Mount Idaho to Stites and on to Canoe Camp below Orofino.⁹ *(This writer has plotted this trail and will assess it at a later date.) In Pioneer Days Of Idaho County, Volume 1, the author of that history, took the word of a long time citizen that I knew as a child. This person said McKenzie traveled up Graves Creek to the prairie. The man was not an historian but knew a lot of local lore; therefore I believe Defenbach to be correct.*

8.

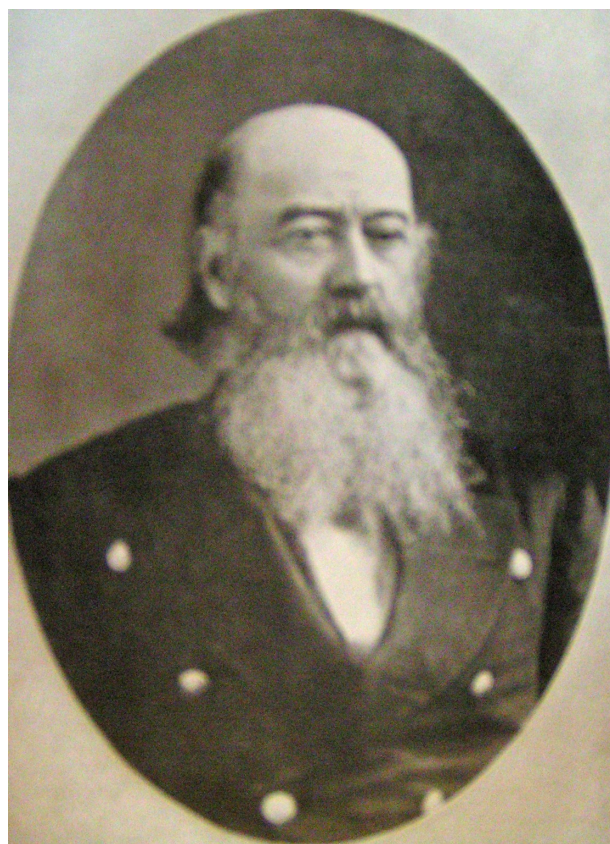
7 IDAHO-The Place And Its People, Byron Defenbach, Volume #1, The American Historical Society, 1933 Pages 80-91.

8 The Definitive Journals of Lewis & Clark, John Ordway and Charles Floyd, Volume #9 of the Nebraska Edition, Pages-306-308.

9 IDAHO-The Place And Its People, Byron Defenbach Volume #1, The American Historical Society 1933 Pages 118-119.

1832: In July of 1832 the Battle of Pierre's Hole was fought. Although not in North Central Idaho, three people who participated in the fight would later have an impact on the history of this section of the state. The fight was between a band of 200 Blackfoot carrying a Hudson Bay Company flag and the Sublette brothers who were accompanied by Flatheads and Nez Perces. The leader of the Nez Perce was Hal-hal-tlos-sot who later became known as *Lawyer* who was the son of Twisted Hair the chief that greeted Lewis & Clark. Joe Meek was part of this party, and so was William Craig a friend of Lawyer, who would settle on Lapwai Creek just south of Jacques Spur.¹⁰

William Sublette, who owned the Rocky Mountain Fur Company, hired Joe Meek as a hunter and trapper in the spring of 1828. In 1832 Sublette and his trappers came up the Payette River and camped at Payette Lake. From there Joe Meek led a party of four men north to the Salmon River. Crossed the river and camped at the head of a small tributary stream in the area of Florence, some twenty-nine years before gold was discovered there. The party consisted of Joe Meek, Antoine Godin, Louis Leaugar, and a man named Small. Based on the description in the book written by Francis Fuller Victor, this writer believes Meek camped in the head waters of Little Slate Creek.¹¹



Joe Meek In His Later Years

Copied From The Book Illustrated History Of North Idaho, 1903

10 Idaho: The Place And Its People, Byron Befenbach, Volume #1, The American History Society, 1933, Pages 160-163.

11 River Of The West, Francis Fuller Victor, Volume #1, Pages 129 & 130.

1835: The Reverend Samuel Parker, with a party of Nez Perce Indians came over the Southern Nez Perce Trail and crossed the Prairie, camping at Yellow Bull Spring in October of that year.¹² *Parker's description of the spring and the bluffs surrounding it fits Yellow Bull Spring and several trails passed near the spring.*

1836: Reverend Henry Spalding and wife, Elisa, arrive at Lapwai and built a cabin some two miles above the mouth of Lapwai Creek, at the foot of what Mrs. Spalding called Thunder Hill. This ground was later allotted to James Grant. A year later in 1837, the Spaldings move down the Creek and built a cabin where the monument to the Spaldings stood in 1933. The building existed until 1902, and in later years was used as a stable.¹³ *(The author does not know if the monument still exists or if it is in the same spot as in 1933.)*

1847: Henry Spalding's ten year old daughter, Eliza, was going to school at the Whitman mission, and in November of that year the Indians massacred Dr. and Mrs. Whitman along with twelve other white people associated with the mission. Also going to school there was Helen Meek, the half breed daughter of Joe Meek. Jim Bridger's daughter was also at the school when this occurred.

At the time of the massacre, Henry Spalding was on his way to the Whitman mission to visit with his daughter. Spalding was almost to the mission when he heard about the killings, and made his way back to Lapwai. At Lapwai he found the contagion had spread among his people. The mission had been ransacked, but his family was safe, having taken refuge at the home of William Craig and his Nez Perce wife.

While Spalding was making his way back to Lapwai, Joe Meek was racing across the country to inform President Polk of the massacre. *(Joe Meek was a relative of Mrs. Polk.)*

A short time later the Spaldings decide to abandon the mission and move to Oregon.¹⁴

1848: Idaho becomes part of the Oregon Territory.

1853: On March 17th, the Washington Territory was created and all of Idaho north of the Salmon River was included in the new territory.¹⁵

1861: In May of that year some 52 men left the Pierce City, Oro Fino district to explore the upper waters of the Clearwater River. *(Based on my plotting of these old trails, this party traveled over the trail later known at the Kamiah-Pierce City Trail as far as Kamiah.)* From Kamiah they traveled up the west side of the Middle Fork as far as Kooskia. Then up the South Fork of the Clearwater River as far as present day Stites. At this point the party left the river and some six miles later the arrived at a Nez Perce village.

The Chief of the village objected to the further advance of the party citing the treaty which banned white men from the south side of the Clearwater. A long discussion followed and thirty of the party turned back, but some twenty men continued on over the Southern Nez Perce Trail and camped at what is now Elk City, where they discovered gold.¹⁶

10.

12 Parker's Exploring Tour, Beyond the Rocky Mountains, Rev. Samuel Parker, A. M. Pages 114-117.

13 Idaho- The Place And Its People, Volume #1, Byron Defenbach, 1933, Pages 202 & 203.

14 Idaho-The Place And Its People, Volume #1, Byron Defenbach, 1933, Pages 205, 206 & 222.

15 Idaho-The Place And Its People, Volume #1, Byron Defenbach, 1933, Page 239.

16 Idaho-The Place And Its People, Volume #1, Byron Defenbach, 1933, Pages 269-271.

In this same year another group of prospector came to the Camas Prairie and camped for a time on Whiskey Bill Creek, which flows through the eastern edge of present day Grangeville. This group continued over the divide, and worked their way up the Salmon River to Slate Creek. They prospected up the Creek and reached the head water of Little Slate Creek in the fall of that year. Here they found gold and in October of 1861, laid out the town site of Florence.¹⁷

1862: This year saw numerous people flocking into the Clearwater region via the Camas Prairie over two or three routes which passed through present day Cottonwood, Harpster, Kamiah, and Mount Idaho. One Mr. Allen built a way station at Cottonwood, and Moses Milner who had come back from, the Elk City region, built a station at Mount Idaho, which became known as Mountain House. When Milner finished his station he began cutting a trail to Florence which would eventually replace the trail from the Salmon River.¹⁸

While Allen and Milner were busy building their stations, William Jackson was building a toll bridge and station on the Cottonwood branch of the Elk City Trail. This station was known as Bridgeport and was located at present day Harpster. Sometime prior to the Indian War Jackson apparently sold to a man named Clindinning who ran the station until the Nez Perce War of 1877, when the Indians burned the station, which was never rebuilt.¹⁹

1863: A new treaty was signed by the Nez Perce Indians, and it was this treaty that ceded the greater part of the Camas Prairie to the United States. However Congress did not confirm the treaty for several years and title could not be obtained until congress acted. *(The earliest title this writer has found was in 1872 on a quarter section of land approximately one half mile north of Grangeville.)*

Also in this year, the Cottonwood station was being run by Wheeler & Toothacher, but the station would change ownership several times during the next fourteen years. Other owners where: John Byron 1864-1865, Joe Moore and Peter Ready ran the station between 1866 and 1877. In 1877 Benjamin Norton was the proprietor.²⁰

1865: John Crooks settled in what would become Grangeville.

1867: John Crooks donated land for the erection of a hall for the Charity Grange, which was organized some two years before by the son of Henry Spalding.²¹

Allen Thompson began surveying a large part of the Camas Praire. He was followed by David P. Thompson in 1870, John B. David 1880, and Edson Briggs 1893.²²

1875: The Territorial Legislature expanded the boundaries of Idaho County north to Lawyers Creek, which encompassed most of the Camas Prairie.²³ The boundaries of the County would be adjusted three more times; in 1885, 1889 & 1891.²⁴

17 Pioneer Days In Idaho County, Volume #1, Sister M. Alfreda Elsensohn , Pages 37 & 38.

18 Illustrated History Of North Idaho, Western Historical Publishing Company, 1903, Page 387.

19 Pioneer Days In Idaho County, Volume #1, Sister M. Alfreda Elsensohn, Page 407.

20 Illustrated History Of North Idaho, Western Historic Publishing Company, 1903, Pages 338 & 339.

21 Idaho-The Place And Its People, Byron Defenbach, 1933, Page 480.

22 BLM-GLO land records & survey notes.

23 Pioneer Days In Idaho County, Volume #1, Sister M. Alfreda Elsensohn, Pages30 & 31.

24 Illustrated History Of North Idaho, Western History Publishing Company, 1903, Pages 399, 400 & 402.

On January 20, 1875, Joe Meek (mountain man, trapper, U.S. Marshall, past member of the U.S House of Representatives and a man who helped shape the history of Idaho and Idaho County), departed this world. Meek's first wife had been murdered, and he had married a Nez Perce woman who was born in 1820 on the Clearwater River near Kamiah. She had five children by Meek and their children all received good allotments after the Nez Perce War. His wife, Virginia, died in 1900 at the age of 80.²⁵

1877: On June 13, 1877 three Indians left their encampment at Tolo Lake and took the trail to the Salmon River. They rode up the river to Richard Divine's place which was about six mile above John Day Creek. Upon arriving the Indians killed Divine, an old retired English sailor, for his rifle. The three spent the night there, and on the 14th started back down river, killing several more settlers at several locations as they traveled back to their camp at Tolo Lake.²⁶

On the night of June 14, 1877 the people at Cottonwood prepared to start for Mount Idaho. The party consisted of Benjamin Norton, his wife and son Hill, Miss Linn Bowers, John Chamberlain, John's wife and two children, Joseph Moore and the wounded Lew Day who had been shot earlier in the day. They left Cottonwood House about 10:30 PM and had covered 10 miles when a party of Nez Perce warriors attacked the wagons. This attack led to the deaths of Benjamin Norton, John Chamberlain, and one of Chamberlain's children. Joseph Moore and Lew Day died from their wounds a few days later.²⁷

On June 21, 1877, some 215 soldiers arrived in Lapwai and prepared to join Perry's forces on the Camas Praire. The following day they started for Cottonwood by way of the northern branch of the Elk City Trail. On the night of June 22nd they camped at the Junction of the Elk City Trail and what was known at that time as the "the trail to Craig's Ferry". The following day they made a hard march to the Norton Ranch (Cottonwood House). On the 23rd they traveled across the Prairie to the Johnson Ranch. (*This is the ranch north of the Whitebird Divide where Parnell fought a rear guard action after the defeat in Whitebird Canyon.*)²⁸

On July 5, 1877 the battle at Cottonwood took place between a detachment of volunteers and a group of Nez Perce warriors. Probably a better description would be a skirmish which lasted about one hour, but was quite deadly. D. B. Randall, B. F. Evans Killed; A. B. Leland, D. H. Howser, Charles Johnson wounded. Howser died later of his wounds. There were twelve additional men in the detachment that escaped injury. This action took place near the intersection of the of the Lewiston-Mountain House Wagon Road and the Elk City Trail.²⁹

Although some histories claim several Indians were killed during this action, Yellow Wolf, Nez Perce warrior of Joseph's band, stated that only one of the Indians in this fight was killed, shot three times by the son of John Crooks. It should also be noted that the Indians were camped at the "Place of Red Rock" which would be Yellow Bull Spring in the Red Rock Canyon. It is at this place where they buried the Indian killed at the Cottonwood skirmish. Yellow Wolf also claimed that the battle lasted from mid-morning to mid-afternoon, some three to four hours.³⁰

25 Illustrated History Of North Idaho, Western Historic Publishing Company, 1903. Page 169.

26 Illustrated History Of North Idaho, Western Historic Publishing Company, 1903, Pages 52 & 53.

27 Illustrated History Of North Idaho, Western Historic Publishing Company, 1903, Pages 56 & 57.

28 Northwestern Fights and Fighters, Cyrus Townsend Brady, 1928, Pages 151 to 153.

29 Illustrated History Of North Idaho, Western Historic Publishing Company, 1903, Pages 63 & 64.

30 Yellow Wolf, His Own Story, L. V. McWhorter, 1940-1968, Pages 75 to 76.

July 10, 1877: By this date General Howard had quit chasing Joseph and his people through the Salmon River Country and had returned to Grangeville. On this date he set off for the Clearwater River country in search of the hostiles. Before engaging the Indians, the army camped that night and waited for the infantry, who had been delayed crossing back over the Salmon River. *(The author believes they crossed the South Fork of the Clearwater using Jackson's Bridge and camped near the present town of Clearwater.)*³¹

July 11, 1877: On the morning of the 11th, Howard and his troops moved out of camp with the following number of troops: 1st Calvary consisting of 180 men, armed with Springfield rifles & Colt revolvers, next the infantry consisting of 200 men, after the infantry marched the artillery consisting of 200 men armed with a howitzer and two Gatling Guns. After advancing some four miles the army encountered two Indian herders driving horses and thus stumbled upon the Nez Perce Camp.³²

This first day of the fight lasted until dark with the Nez Perce in control of a spring that both the whites and the natives needed. Although Major Trimble claims that one of his men managed to get to the spring and fill a few canteens which the wounded desperately needed.³³ *(Yellow Wolf mentions crawling to water but does not mention seeing anyone else near the spring.*

July 12, 1877: Fighting started again in the morning, the army having dug rifle pits during the night, while the Indians had built a rock shelters. Yellow Wolf describes the “continues roar” of the army volleys. About mid-day the soldiers mounted a charge and the Nez Perce left the battle field and retreated up the left side of Cottonwood Creek.^{34 35}

(General Howard claimed that fifteen Indians were killed in this battle and that eight more were found dead on the trail who had died from wounds in the battle. Yellow Wolf claims this was not true that only four warriors were killed.³⁶ Howard reported that he lost thirteen killed and 22 wounded.)

July 13, 1877: The Nez Perce crossed the Middle Fork of the Clearwater River on this morning and the Nez Perce waited for three days for Howard to cross over and “make war”, which marked the beginning of their retreat over the Lolo Trail.³⁷ *(The waring Nez Perce passed out of Idaho for a short time but not out of our history.)*

1878: In August a small band of Nez Perce decided to return from their refuge in Canada. They were returning over the Southern Nez Perce trail with the Calvary in hot pursuit. When they came to Elk City they stopped at a “China-man's” cabin looking for something to eat. The band was spotted by a white man who ran into town and proclaimed the Indians were about to attack, which resulted in the whites holding up in the fortifications they had erected the year before. The Indians ignored the whites and proceeded on the Newsome Creek where they “plundered a China-man's” cabin and stole a horse.

31 Northwestern Fights and Fighters, Cyrus Townsend Brady, 1928, Pages 139 &140.

32 Northwestern Fights and Fighters, Cyrus Townsend Brady, 1928, Page 140 & 141.

33 Northwestern Fights and Fighters, Cyrus Townsend Brady, 1928m Page 144.

34 Yellow Wolf, His Own Story, L. V. McWhorter, 1940-1968, Pages 95 & 95.

35 Northwestern Fights and Fighters, Cyrus Townsend Brady, 1928, Page 160.

36 Yellow Wolf, His Own Story, L.V. McWhorter, 1940-1968, Pages 98 & 99.

37 Yellow Wolf, His own Story, fl,V, McWhorter, 1940-1968, Page 101.

Meanwhile word of the Indians in Elk City had reached Mount Idaho and a few settlers under the command of Benjamin F. Morris went looking for these “renegades”. The volunteers spotted the Indians across the South Fork of the Clearwater beyond Jackson's Bridge. Upon encountering the whites the Indians scattered and escaped.³⁸ *The reader should also see Yellow Wolf, His Own Story, pages 260 -273. This ended the Indian War in Idaho County and a few day later Yellow Wolf turned himself in at the Agency in Lapwai.*



Cottonwood About 1899

Courtesy of the University of Idaho library, Special Collections & Archives, PG-5-017-1a

1885: The town of Grangeville is laid out and surveyed by F. R. Turner. As laid out the town consisted of nine regular blocks, 200 feet by 400 feet. Bounded by North Street, South Street, Mill Street and Coon Street (now known as State Street.)³⁹ *(It should be noted that a Mr. Coon was the first to build on this street at the corner of what is now Main and State Streets.)*

1887: J. B. Rice locates and lays out the town of Westlake on the Lewiston-Mountain House Road/Elk City Trail. The town was named after his wife, Sarah (Westlake) Rice.⁴⁰

38 Illustrated History Of North Idaho, Western Historic Publishing Company, 1903, Page 393.

39 Illustrated History Of North Idaho, Western Historic Publishing Company, 1903, Page 419.

40 Illustrated History Of North Idaho, Western Historic Publishing Company, 1903, Page 428.

1889: Marked the second year of drought in Idaho County which created a depression among the miners as the creeks dried up. The stock man and farmers were also feeling the affects and in September a large wildfire burned threatening the town. On the west side of Three Mile Creek flames from the fire were forty to fifty feet high.⁴¹

1890: Company C, First Regiment, Idaho National Guard was organized.⁴²

1893: The first paper in the town of Cottonwood was started. It was named the Cottonwood Report. While this paper was starting up a nation wide depression began that would last until 1896.⁴³

1894: Construction of a wagon road from the town of Clearwater to Elk City was started. It would be finished in 1896. The way station at Switchback was also built in this year.⁴⁴

1895: A gold boom occurred in the Elk City-Dixie Districts and the Salmon River regions that would last until 1898. While prospectors and investors where going into the back county, George W. Tamblin surveyed the Town-site of Nezperce and probate Judge P.E. Stookey filed on a quarter section of land in behalf of the people and lots were distributed.

In November of this year, George Rowton in behalf of himself and one hundred others made application to the government to set aside 104 acres of vacant land lying along the east side of the South Fork of the Clearwater River and the south side of the Middle Fork of the Clearwater River, near the junction of the two streams, for a town site.

The application was granted and the town was first known as Stuart, after James Stuart, a Nez Perce Indian, a land surveyor and in 1903 was a leading merchant of the town. With the arrival of the first train in the town, the railroad named the station Kooskia, because there was already a station named Stuart. For the sake of harmony the town adopted the name of Kooskia.⁴⁵

1896: M. B. Morrow, a sheep man, laid out the town of Morrow on the south side of the stage road from Lewiston which followed the old trail from that town into Idaho county. W.L. Thompson, trustee for Mr. Morrow, opened a general store, which was followed by D,L, Slavens building Hotel Morrow.⁴⁶ (*This writer had several of his sibblings go to school at Morrow during the early 1940's.*)

1897: Jacob Stites Homesteaded along the South Fork of the Clearwater River and in May of 1899 he relinquished his right to 40 acres on which the town of Stites was erected.⁴⁷

1898-1900: Post offices were established in Ilo, Volmer, Forest Gifford and twenty-one other small towns in North Central Idaho and in 1899 the Clearwater Short Line Railroad was complete to Kooskia. It would eventually stop at Stites.⁴⁸

41 Illustrated History Of North Idaho, Western Historic Publishing Company, 1903, Page401.

42 Illustrated History Of North Idaho, Western Historic Publishing Company, 1903, Page 401.

43 Illustrated History Of North Idaho, Western Historic Publishing Company, 1903, Pages 404 & 424.

44 Pioneer Days In Idaho County, Volume #1, Sister M. Alfreda Elsensohn, Pages 178 & 425.

45 Illustrated History Of North Idaho, Western Historic Publishing Company, 1903, Pages 117, 404, 405, 426.

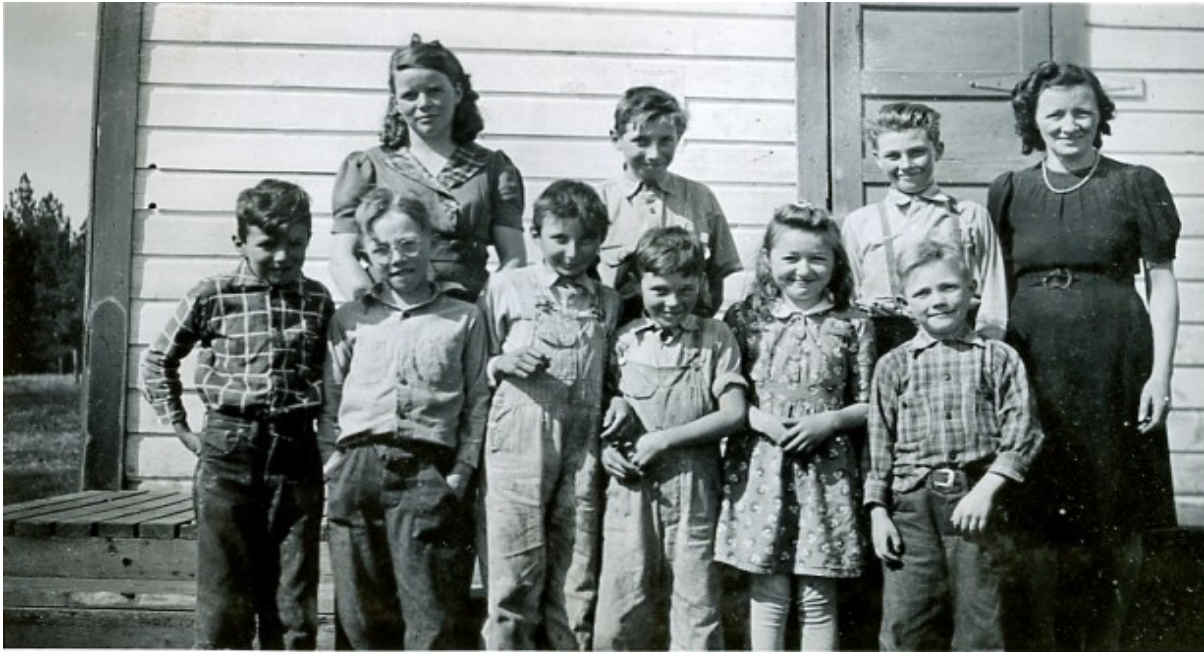
46 Illustrated History Of North Idaho, Western Historic Publishing Company, 1903, Page 118.

47 Illustrated History Of North Idaho, Western Historic Publishing Company, 1903 Page 424.

48 Illustrated History Of North Idaho, Western Historic Publishing Company , 1903, Pages 119 & 120.

1900: The town of Clearwater had a store operated by Obannon & Clark, a hotel owned by Harry Baker, a livery & feed stable and a post office. The population was 90 souls.⁴⁹

1911: Clearwater County became the twenty-fifth county and Lewis County became the twenty-seventh county⁵⁰



The School At Morrow: Back row: June Huntley, Dawn Huntley George Wayne & Teacher Gladys Loft. Front row: Ralph Mathison, Archie Frost, Lee Huntley, Ray Huntley, Joan Gilbert, Bob Frost ?
Photo from the collections of James G. Huntley.

1917: A survey of the North & South Highway was completed from Whitebird and ended in Lewis County and by 1922 the highway was completed to Grangeville.⁵¹

1932: The Highway to Elk City was completed which spelled the end to the stations along the trail to Elk City. This writer has found no record of when the trail from Cottonwood to Harpster was abandon.⁵²

49 Illustrated History Of North Idaho, Western Historic Publishing Company, 1903, Page 431.

50 Idaho-The Place and Its People, Byron Defenbach, The American Historical Society, 1933, Pages 518 &520.

51 Idaho County Free Press 1920-1922.

52 Pioneer Days In Idaho County, Volume #1, Sister M. Alfreda Elsensohn, Page 178.

Coordinates For The Elk City Trail By Township & Range Northern Branch

T36N R5W

Section 32: Beginning at the at the Clearwater Memorial Bridge, Elevation 737 ft.

NAD27: 46° 25' 01.95" N	116° 59' 57.66" W
NAD83: 46° 25' 01.53381" N	117° 00' 01.22246" W
UTM Zone 11: Easting 499973.9	Northing 5140391

North Between Sections 32 & 33 @ 139 ft Road from Lewiston to Kamiah and Elk City.

NAD 27: 46° 24' 48.72" N	116° 58' 47.80" W
NAD 83: 46° 24' 47.07385 N	116° 58' 51.36029" W
UTM Zone 11: Easting 501465.2	Northing 5139944.9

East Between Sections 32 & 4 @ 299 ft. Road from Lewiston to Kamiah & Elk City.

NAD 27: 46° 24' 47.49" N	116° 58' 43.34" W
NAD 83: 46° 24' 47.07390" N	116° 58' 46.90018" W
UTM Zone 11: Easting 501560.6	Northing 5138503.3

T35N, R5W

South Between Sections 3 & 4 @ 2145ft. Road from Lewiston to Kamiah & Elk City.

NAD 27: 46° 24' 26.51" N	116° 57' 32.13" W
NAD 83: 46° 24' 26.09445" N	116° 57' 35.68780" W
UTM Zone 11f: Easting 504697.7	Northing 5138343.3

West Between Sections 2 & 11 @ 4323 ft. Road from Lewiston to Kamiah & Elk City.

NAD 27: 46° 23' 55.55" N	116° 56' 02.36" W
NAD 83: 46° 23' 55.13502" N	116° 56' 05.91471" W
UTM Zone 11: Easting 504998.7	Northing 5138343.7

North Between Sections 11 & 12 @ 1848 ft. Road from Lewiston to Kamiah & Elk City.

N AD 27: 46° 23' 21.76" N	116° 55' 00.99" W
NAD 83: 46° 23' 21.34514" N	116° 55' 04.54227" W
UTM Zone 11: Easting 506310.3	Northing 5137302

T35N, R 4W

East Between Sections 7 & 18 @ 2376 ft. Road from Lewiston to Kamiah & Elk City.

NAD 27: 46° 23' 02.85" N	116° 53' 10.89" W
NAD 83: 46° 23' 02.43613" N	116° 53' 14.43906" W
UTM Zone 11: Easting 508662.7	Northing 5136721.2

North Between Sections 17 & 18 @ 4108 ft. Road from Lewiston to Kamiah & Elk City.
NAD 27: 46° 22' 51.10" N 116° 52' 29.12" W
NAD 83: 46° 22' 50.68651" N 116° 52' 23.66750" W
UTM Zone 11: Easting 509747.7 Northing 5136360.2

North Between Sections 16 & 17 @ 3135 ft. Road from Lewiston to Kamiah & Elk City.
NAD 27: 46° 22' 41.21" N 116° 51' 13.79" W
NAD 83: 46° 22' 40.79712" N 116° 51' 17.33563" W
UTM Zone 11: Easting 511165.2 Northing 5136057.4

North Between Sections 15 & 16 @ 1815ft. Road from Lewiston to Kamiah & Elk City.
NAD 27: 46° 22' 28.97" N 116° 49' 57.88" W
NAD 83: 46° 22' 28.55478" N 116° 50' 01.42347" W
UTM Zone 11: Easting 512787.6 Northing 5135682.9

North Between Sections 14 & 15 @ 1303 ft. Road from Lewiston to Kamiah & Elk City.
NAD 27: 46° 22' 24.63" N 116° 48' 42.68" W
NAD 83: 46° 22' 24.21859" N 116° 48' 46.22153" W
UTM Zone 11: Easting 514394.5 Northing 5135552.5

Junction of the Lewiston to Grangeville Road & Road from Lewiston to Kamiah & Elk City
NAD 27: 46° 22' 09.03" N 116° 47' 48.38" W
NAD 83 46° 22' 08.61889" N 116° 47' 51.91983" W
UTM Zone 11: Easting 515555.8 Northing 5135073.9

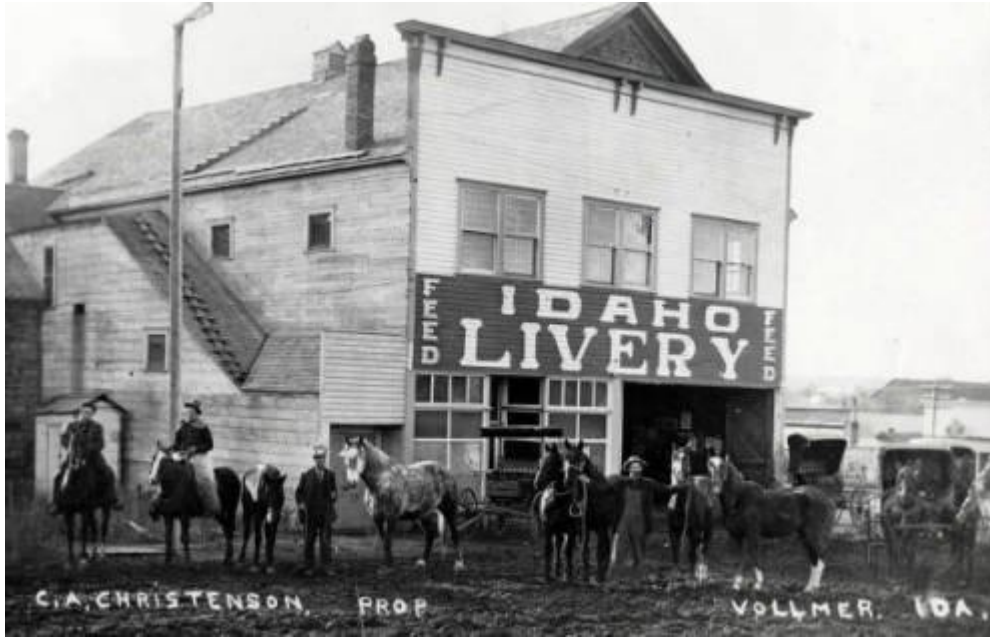
T35N, R3W

South Between Sections 19 & 24 @ 5105 ft. Road from Lewiston to Kamiah & Elk City.
NAD 27: 46° 24' 22.12" N 116° 46' 11.02" W
NAD 83 46° 21' 21.70897" N 116° 46' 14.55634" W
UTM Zone 11: Easting 517640.2 Northing 5133631.7

North Between Sections 19 & 20 @ 4290 ft. Road from Lewiston to Kamiah & Elk City.
NAD 27: 46° 22' 00.14" N 116° 44' 45.16" W
NAD 83: 46° 21' 59.73100" N 116° 44' 48.69537" W
UTM Zone 11: Easting 519471.4 Northing 5134810.8

West Between Sections 17 & 20 @ 1716 ft Road from Lewiston to Kamiah & Elk City.
NAD 27: 46° 22' 10.40" N 116° 43' 52.85" W
NAD 83 46° 22' 09.99234" N 116° 43' 56.38495" W
UTM Zone 11: Easting 520588 Northing 5135131.2

From Section 17 to the East boundary of the township the Road/Trail is projected due to the lack of calls by the surveyors.



The Livery at Volmer Idaho 1913 (Present Day Craigmont)
 Courtesy of the University of Idaho Library Special Collections & Archives P-5-099-1b

T35N,R2W

On the west boundary of the township: South Between Sections 13 & 18 @ 800 ft. Road from Lewiston to Kamiah & Elk City.

NAD 27: 46° 22' 55.40" N	116° 38' 23.17" W
NAD 83: 46° 22' 55.00065" N	116° 38' 26.70154 W
UTM Zone 11: Easting 527625.5	Northing 5136548.3

North Between Sections 17 & 18 @ 3432 Ft. Road/Trail to Kamiah, Pierce City & Elk City.

NAD 27: 46° 22' 44.24" N	116° 37' 07.17" W
NAD 83: 46° 22' 43.84914" N	116° 37' 10.70035" W
UTM Zone 11: Easting 529250.6	Northing 5136211.5

North Between Sections 16 & 17 @ 970 ft. Road /Trail to Kamiah, Pierce City & Elk City.

NAD 27: 46° 22' 19.83" N	116° 35' 50.99" W
NAD 83: 46° 22' 19.43276" N	116° 35' 54.51900" W
UTM Zone 11: Easting 530881.1	Northing 5135466.1

West Between Sections 16 & 21 @ 2241 ft. Road/Trail to Kamiah, Pierce City & Elk City.

NAD 27: 46° 22' 10.41" N	116° 35' 06.95" W
NAD 83: 46° 22' 10.01336" N	116° 35' 10.47831" W
UTM Zone 11: Easting 531824.2	Northing 5135180.9

North Between Sections 21 & 22 @ 1881 ft. Road/Trail to Kamiah, Pierce City & Elk City.
NAD 27: 46° 21' 36.33" N 116° 34' 34.85" W
NAD 83: 46° 21' 35.93282" N 116° 34' 38.37748" W
UTM Zone 11: Easting 532515.6 Northing 5135180.2

North Between Sections 26 & 27 @ 4765 ft. Road/Trail to Kamiah, Pierce City, & Elk City.
NAD 27: 46° 21' 12.14" N 116° 33' 19.40" W
NAD 83: 46° 21' 11.74345" N 116° 33' 22.92631" W
UTM Zone 11: Easting 534132.1 Northing 5133395.2

West Between Sections 26 & 35 @ 3564 ft. Road/Trail to Kamiah, Pierce City & Elk City.
NAD 27: 46° 20' 25.13" N 116° 32' 55.16" W
NAD 83: 46° 20' 24.73217" N 116° 32' 58.68552" W
UTM Zone 11: Easting 534658.5 Northing 5131946.1

West Between Sections 2 & 35 @ 1815 ft. Road/Trail to Kamiah, Pierce City & Elk City.
NAD 27: 46° 19' 32.66" N 116° 32' 30.19" W
NAD 83: 46° 19' 32.26064" N 116° 32' 33.71471" W
UTM Zone 11: Easting 535201.6 Northing 5130329.6

T34N, R2W

North Between Sections 13 & 14 @ 1749 ft Road/Trail to Kamiah, Pierce City & Elk City.
NAD 27: 46° 17' 12.13" N 116° 32' 04.36" W
NAD 83: 46° 17' 11.72569" N 116° 32' 07.88308" W
UTM Zone 11: Easting 535779.4 Northing 5125995.3

& @ 2854 ft. Road/Trail to Kamiah, River City (Greer?) Pierce City & Elk City.
NAD 27: 46° 17' 23.04" N 116° 32' 03.82" W
NAD 83: 46° 17' 22.63612" N 116° 32' 07.34316" W
UTM Zone 11: Easting 5357889 Northing 5126332.1

West Between Sections 13 & 24 @ 5131 ft. Road/Trail to Kamiah, Pierce City & Elk City.
NAD 27: 46° 16' 54.52" N 116° 32' 00.25" W
NAD 83: 46° 16' 54.11505" N 116° 32' 05.74289" W
UTM Zone 11: Easting 535828.4 Northing 5125452

West Between Sections 24 & 25 @ 5016 ft. Junction of Kamiah, Road and Elk City Trail.
NAD 27: 46° 16' 02.08" N 116° 32' 00.25" W
NAD 83: 46° 16' 01.67305" N 116° 32' 03.77237" W
UTM Zone 11: Easting 535880 Northing 5123833.7

South on the East Boundary of Section 36 @ 33 ft. Elk City Trail.

NAD 27: 46° 15' 09.68" N 116° 30' 49.01" W
NAD 83: 46° 15' 09.27195" N 116° 30' 52.53150 W
UTM Zone 11: Easting 537414.9 Northing 5122225.5

T33N,R1W

West Between Sections 4 & 33 @ 4686 ft. Elk City Trail

NAD 27: 46° 14' 17.83" 116° 28' 11.92" W
NAD 83: 46° 14' 17.42270" N 116° 28' 15.44016" W
UTM Zone 11: Easting 540789 Northing 5120646.7

West Between Sections 12 & 13 @ 3069 ft. Elk City Trail.

NAD 27: 46° 12' 32.54" N 116° 24' 03.17" W
NAD 83: 46° 12' 32.13335" N 116° 24' 06.68828" W
UTM Zone 11: Easting 546140 Northing 5117434.9

West Between Sections 3 & 10 @ 1584 ft. Elk City Trail.

NAD 27: 46° 13' 25.13" N 116° 26' 13.41" W
NAD 83: 46° 13' 24.72295" N 116° 26' 16.92921" W
UTM Zone 11: Easting 543338.6 Northing 5119037.6

South Between Sections 3 & 4 @ 2877 ft. Elk City Trail.

NAD 27: 46° 13' 49.13" N 116° 27' 05.63 W
NAD 83: 46° 13' 48.7228" N 116° 27' 09.14960" W

T33N,R1E

On West Boundary of Township .Surveyor Thompson Called Trail by Name 1869.

North Between Sections 13 & 18 @ 3597 ft. Elk City Trail.

NAD 27 46° 12' 16.70" N 116° 23' 19.56" W
NAD 83: 46° 12' 16.29354" N 116° 23' 23.07799" W
UTM Zone 11: Easting 547079.1 Northing 5116953.1

West Between Sections 26 & 35 @ 2772 ft. Elk City Trail.

NAD 27: 46° 09' 55.60" N 116° 17' 42.19" W
NAD 83: 46° 09' 55.19388" N 116° 17' 45.70651" W
UTM Zone 11: Easting 554347.4 Northing 5112658.1

West Between Sections 22 & 27 @ 871 ft. Elk City Trail.

NAD 27: 46° 10' 47.86" N 116° 18' 31.62" W
NAD 83: 46° 10' 47.86" N 116° 18' 31.13662" W
UTM Zone 11, Easting 553273.4 Northing 5114261.8

North Between Sections 21 & 22 @ 4109 ft. Elk City Trail
NAD 27: 46° 11' 28.74" N 116° 19' 34.77" W
NAD 83: 46° 11' 28.33582 N 116° 19' 38.28627" W
UTM Zone 11: 557908.8 Northing 5115511.9

North Between Sections 16 & 17 @ 528 ft. Elk City Trail.
NAD 27: 46° 11' 45.91" N 116° 20' 49.48" W
NAD 83: 46° 11' 45.50513" N 116° 20' 52.99680" W
UTM Zone 11: Easting 550303.1 Northing 5116028.4

North Between Sections 17 & 18 @ 1980 ft. Elk City Trail.
NAD 27: 46° 12' 00.50" N 116° 22' 04.79" W
NAD 83: 46° 12' 00.09430 N 116° 22' 08.307349" W
UTN Zone 11: Easting 548685.4 Northing 5116465.7



Old Town Of Ilo (Present Day Craigmont) 1928

Courtesy of the University of Idaho Library Special Collections and Archives PG-5-099-1b

T33N, R2E

North between Sections 35 & 36 @ 2244 ft. Elk City Trail.

NAD 27: 46° 09' 23.30" N	116° 09' 30.29" W
NAD 83: 46° 09' 22.90361" N	116° 09' 33.80290 W
UTM Zone 11: Easting 564906.7	Northing 5111764.1

West Between Sections 25 & 36 @ 792 ft. Elk City Trail

NAD 27: 46° 09' 54.03" N	116° 08' 26.00" W
NAD 83: 46° 09' 53.63652" N	116° 08' 29.51191" W
UTM Zone 11: Easting 566275.4	Northing 5112727.3

On the East Boundary of Township: North between Sections 25 & 30 @ 700 ft. Elk City Trail.

NAD 27: 46° 10' 01.07" N	116° 08' 14.97" W
NAD 83: 46° 10' 00.67710" N	116° 08' 18.48171" W
UTM Zone 11 Easting 566509.6	Northing 5112947.2

T33N, R3E

North Between Sections 29 & 30 @ 3531 ft. Elk City Trail.

NAD 27: 46° 10' 28.47" N	116° 07' 01.56" W
NAD 83: 46° 10' 28.08007 N	116° 07' 05.07072" W
UTM Zone 11: Easting 568074.4	Northing 5113810.2

West Between Sections 20 & 29 @ 3234 ft. Elk City Trail.

46° 10' 46.87" N	116° 06' 31.57" W
46° 10' 46.48158" N	116° 06' 35.02021" W
UTM Zone 11: Easting 568712.3	Northing 5114395.7

West Between Sections 16 & 21 @ 1650 ft. Elk City Trail.

NAD 27: 46° 11' 39.95" N	116° 04' 54.48" W
NAD 83: 46° 11' 39.56617" N	116° 04' 57.98869" W
UTM Zone 11: Easting 570773.7	Northing 5116047.4

North Between Sections 25 & 21 @ 2904 ft. Elk City Trail.

NAD 27: 46° 11' 15.63" N	116° 05' 46.00"
NAD 83: 46° 11' 15.24390" N	116° 05' 49.50944" W
UTM Zone 11: Easting 569678	Northing 5115284.1

West Between Sections 10 & 15 @ 4488 ft. Elk City Trail.

NAD 27: 46° 12' 32.79" N	116° 04' 19.47" W
NAD 83: 46° 12' 32.40921: N	116° 04' 22.97767" W
UTM Zone 11: Easting 571505.1	Northing 5117687.1
	& @ 400 ft. Elk City Trail.
NAD 27: 46° 12' 32.42 N	116° 03' 21.18" W
NAD 83: 46° 12' 32.04059" N	116° 03' 24.68724" W
UTM Zone 11: Easting 572754.2	Northing 5117690.4

On East Boundary: North Between Sections 24 & 19 @ 1600 ft. Elk City Trail (Projected).

NAD 27: 46° 11' 02.72" N	116° 00' 44.97" W
NAD 83: 46° 11' 02.34068" N	116° 00' 48.47726" W
UTM Zone 11: Easting 576135.9	Northing 5114962.6

West Between Sections 13 & 24 @ 3531 ft. Elk City And Southern Nez Perce Trails.

NAD 27: 46° 11' 40.07" N	116° 01' 34.73" W
NAD 83: 46° 11' 39.69099" N	116° 01' 38.23715" W
UTM Zone 11: Easting 575055	Northing 5116102.3

T33N, R4E

East Between Sections 19 & 30 @ 1966 ft. Elk City And Southern Nez Perce Trails

NAD 27: 46° 10' 46.40" N	116° 00' 17.97" W
NAD 83: 46° 10' 46.02068" N	116° 00' 21.47727" W
UTM Zone 11: Easting 576721	Northing 5114466.4

East Between Sections 30 & 31 @ 3201 ft. Elk City And Southern Nez Perce Trails.

NAD 27: 46° 09' 53.70" N	116° 00' 00.91" W
NAD 83: 46° 09' 53.31897" N	116° 00' 04.41783" W
UTM Zone 11: Easting 577107.2	Northing 5111239.9

East on the South Boundary of Section 31 @ 3000 ft. Elk City & Southern Nez Perce Trails

NAD 27: 46° 09' 01.75" N	116° 00' 03.93" W
NAD 83: 46° 09' 01.36680" N	116° 00' 07.43854" W
UTM Zone 11: Easting 577062.6	Northing 5111239.9

T32N, R2E

South Between Sections 5 & 6 @ 2310 ft. Northern Branch Elk City Trail.

NAD 27: 46° 08' 38.93" N	116° 14' 32.23 W
NAD 83: 46° 08' 38.52413" N	116° 14' 35.74616 W
UTM Zone 11: Easting 558443.6	Northing 5110329.2

South Between Sections 4 & 5 @ 3000 ft. Northern Branch Elk City Trail.

NAD 27: 46° 08' 33.01" N	116° 13' 17.02" W
NAD 83: 46° 08' 32.60575" N	116° 13' 20.53557" W
UTM Zone 11: Easting 560058.9	Northing 5110162.1

South Between Sections 3 & 4 @ 2574 ft. Northern Branch Elk City Trail.

NAD 27: 46° 08' 37.09" N	116° 12' 02.16" W
NAD 83: 46° 08' 36.68781" N	116° 12' 05.67487" W
UTM Zone 11: Easting 561663.7	Northing 5110304.1

South Between Sections 2 & 3 @ 1749 Northern Branch Of The Elk City Trail.

NAD 27: 46° 08' 44.49" N 116° 10' 46.07" W
NAD 83: 46° 08' 44.09004" N 116° 10' 49.58412" W
UTM Zone 11: Easting 563293.7 Northing 5110549.1

T32N, R4E

South Between Sections 5 & 6 @ 1320 ft. Elk City-South Nez Perce Trail.

NAD 27: 46° 08' 48.66" N 115° 59' 37.86" W
NAD 83: 46° 08' 48.27713" N 115° 59' 41.36841" W
UTM Zone 11: Easting 577626.9 Northing 5110843

West Between Sections 5 & 8 @ 792 ft. Elk City-South Nez Perce Trail.

NAD 27: 46° 08' 07.71" N 115° 58' 34.99" W
NAD 83: 46° 08' 07.32772" N 115° 58' 38.49815" W
UTM Zone 11: Easting 579182.3 Northing 50994782

West Between Sections 8 & 17 @ 330 ft. Trail Forks, East Fork Up Battle Ridge, West Fork Up
West side of South Fork Clearwater River.

NAD 27: 46° 14.73" N 115° 58' 27.18" W
NAD 83: 46° 07' 14.34595" N 115° 58' 30.68867" W
UTM Zone 11: Easting 579180.5 Northing 5107963.3

East Fork Elk City-South Nez Perce Trail.

North Between Sections 16 & 17 @ 4620 ft. Elk City-South Nez Perce Trail.

NAD 27: 46° 07' 08.28" N 115° 58' 22.77" W
NAD 83: 46° 07' 07.89586" N 115° 58' 26.27869" W
UTM Zone 11: Easting 579277.7 Northing 5107765.4

North Between Sections 21 & 22 @ 4488 ft. Elk City- South Nez Perce Trail.

NAD 27: 46° 06' 14.12" 115° 57' 09.07" W
NAD 83: 46° 06' 13.73653" N 115° 57' 12.57826" W
UTM Zone 11: Easting 580881.5 Northing 5106114.5

West Between Sections 22 & 27 @ 3036 ft. Elk City- South Nez Perce Trail.

NAD 27: 46° 05' 29.72" N 115° 56' 37.99" W
NAD 83: 46° 05' 29.33606" N 115° 56' 41.49825" W
UTM Zone 11: Easting 581567 Northing 5104753

North Between Sections 26 & 27 @ 528 ft. Elk City-South Nez Perce Trail.

NAD 27: 46° 04' 42.73" N 115° 55' 53.97" W
NAD 83: 46° 04' 42.34605" N 115° 55' 57.47803" W
UTM Zone 11: Easting 582531.7 Northing 5103315.4

East Between Section 26 & 35 @ 264 ft. Elk City-South Nez Perce Trail.

NAD 27: 46° 04' 37.52" N 115° 55' 50.59" W
NAD 83: 46° 04' 37.13600" N 115° 55' 54.09802" W
UTM Zone 11: Easting 582606.4 Northing 5103155.5

Projected Between Sections 35 & 2 On South Boundary Of Township. Elk City-South Nez Trail

NAD 27: 46° 03' 45.08" N 115° 54' 55.41" W
NAD 83: 46° 03' 44.69632" N 115° 54' 58.91758" W
UTM Zone 11: Easting 583813.7 Northing 5101553.1

West Fork Of Elk City -South Nez Perce Trail.

West Between Sections 17 & 20 @ 1452 ft. Southern Nez Perce-Elk City Trail

NAD 27: 46° 06' 22.56" N 115° 58' 44.52" W
NAD 83: 46° 06' 22.17329" N 115° 58' 48.02953" W
UTM Zone 11: Easting 578829 Northing 5106348.3

West Between Sections 29 & 32 @ 1122 ft. Southern Nez Perce-Elk City Trail.

NAD 27: 46° 04' 37.41" N 115° 58' 39.19" W
NAD 83: 46° 04' 37.01939" N 115° 58' 42.70071" W
UTM Zone 11: Easting 578985.1 Northing 5103104.4

West Between Sections 20 & 29 @ 1056 ft. Southern Nez Perce-Elk City Trail.

NAD 27: 46° 05' 29.91" N 115° 58' 37.86" W
NAD 83: 46° 05' 29.52149" N 115° 58' 41.37006" W
UTM Zone 11: Easting 578992.8 Northing 5104725.1

West On the South Boundary of Section 32 @ 100 ft. Southern Nez Perce-Elk City Trail.

NAD 27 46° 03' 45.01" N 115° 58' 24.56" W
NAD 83L 46° 03' 44.61794" N 115° 58' 28.07108" W
UTM Zone 11" Easting 579320.2 Northing 5101491.1

T31N, R4E

East Fork of Elk City-South Nez Perce Trail.

Trail Projected Between Sections 1 & 12 as Surveyors Did Not Call Location.

NAD 27: 46° 02' 53.01" N 115° 53' 53.50" W
NAD 83: 46° 02' 52.62704" N 115° 53' 57.00693" W
UTM Zone 11: Easting 585166.1 Northing 5099964.3

Trail Projected Between Sections 1 & 2 As Surveyors Did Not Call Location.

NAD 27: 46° 03' 36.76" N 115° 54' 39.26" W
NAD 83: 46° 03' 36.37668" N 115° 54' 42.76738" W
UTM Zone 11: Easting 584164.2 Northing 5101301.1

South Between Sections 3 & 4 @3861 Elk City- South Nez Perce Trail

NAD 27: 46° 03' 06.32" N 115° 57' 08.92" W
NAD 83: 46° 03' 05.92953 N 115° 57' 12.43022" W
UTM Zone 11: Easting 580961 Northing 5100318.2

West Between Sections 12 & 13 @ 1188 ft. West Fork Of Southern Nez Perce Trail.

NAD 27: 46° 02' 00.29" N 115° 53' 41.46" W
NAD 83: 46° 01' 59.90576" N 115° 53' 44.96710" W
UTM Zone 11: Easting 585447.4 Northing 5098340.8

Common Point Where The East Fork and West Forks Join.

North on the East Boundary of Section 13 @ 5016 ft. Elk City- South Nez Perce Trail.

NAD 27: 46° 01' 57.90" N 115° 53' 24.25" W
NAD 83: 46° 01' 57.51641" N 115° 53' 27.75680" W
UTM Zone 11: Easting 585818.4 Northing 5098272.2

T31N, R5E

East Between Sections 19 & 18 @ 2442 ft. Elk City-South Nez Perce Trail

NAD 27: 46° 01' 12.88" 115° 52' 51.08" W
NAD 83: 46° 01' 12.49632" N 115° 52' 54.5864.8" W
UTM Zone 11: Easting 586550.9 Northing 5096892.7

The Common Point Between the Northern Trail And The Southern Trail From Lewis ton-Elk City.

East along the East-West Center Line Of Section 19 @ 2600 ft Elk City-South Nez Perce Trail.

NAD 27: 46° 00' 43.72" N 115° 52' 47.89" W
NAD 83: 46° 00' 43.3355.1" N 115° 52' 51.39660" W
UTM Zone 11: Easting 586632.2 Northing 5095993.7



Main Street of Stities, Idaho 1902

Courtesy of The University of Idaho Library Special Collections & Archives PG-5-122-1a.

Coordinates for the Southern Branch of the Lewiston-Elk City Trail.

T35N, R4W

Junction with the Lewiston to Kamiah, Elk City & Pierce City Wagon Road.

NAD 27: 46° 22' 09.03" N	116° 47' 48.38" W
NAD 83: 46° 22' 08.61889" N	116° 47' 51.91983" W
UTM Zone 11: Easting 515555.8	Northing 5135073.9

West Between Sections 23 & 26 @ 3100 ft. Lewiston to Mountain House, Elk City Road.

NAD 27: 46° 21' 19.30" N	116° 48' 10.98" W
NAD 83: 46° 21' 18.88752 N	116° 48' 14.51914" W
UTM Zone 11: Easting 515076.8	Northing 5133537.7

West Between Sections 26 & 35 @ 2774 ft.. Lewiston to Mountain House, Elk City Road.

NAD 27: 46° 20' 27.26" N	116° 48' 05.52" W
NAD 83: 46° 20' 27.22647" N	116° 48' 08.52" W
UTM Zone 11: Easting 51220	Northing 5131944.6

North Between Sections 35 & 36 @ 1672 ft. Lewiston to Mountain House, Elk City Road.

NAD 27: 46° 19' 51.88" N	116° 47' 25.27" W
NAD 83: 46° 19' 50.96606" N	116° 47' 28.80587" W
UTM Zone 11: Easting 516060.9	Northing 5131941.6

West On The South Boundary Of The Township Between Sections 36 & 1 @4173 ft. Lewiston to Mountain House, Elk City Road.

NAD 27: 46° 19' 35.25" N	116° 47' 08.06" W
NAD 83: 46° 19' 34.83588" N	116° 47' 11.59508" W
UTM Zone 11: Easting 516430.2	Northing 513 0329.6

T34N, R4W

West Between Sections 12 & 13 @ 594 ft. Lewiston To Mountain House, Elk City Road.

NAD 27: 46° 17' 49.59" N	116° 46' 17.42" W
NAD 83: 46° 17' 49.17400" N	116° 46' 20.95133" W
UTM Zone 11" Easting 517522.4	Northing 5127071.4

T34N, R3W,

North Between Sections 13 & 18 @ 4600 ft. Lewiston to Mountain House, Elk City Road

NAD 27" 46° 17' 42.82" N	116° 46' 08.87" W
NAD 83: 46° 17' 42.40393" N	116° 46' 12.40097" W
UTM Zone 11: Easting 517705.9	Northing 5126863

East Between Sections 18 & 19 @ 2100 ft. Lewiston to Mountain House, Elk City Road.
NAD 27: 46° 16' 56.99" N 116° 45' 40.16" W
NAD 83: 46° 16' 56.57315" N 116° 45' 43.68922" W
UTM Zone 11: Easting 518324.4 Northing 5125450.3

North Between Sections 19 & 20 @ 940 ft. Lewiston to Mountain House, Elk City Road.
NAD 27: 46° 16' 10.28" N 116° 44' 37.56" W
NAD 83: 46° 16' 09.86275" N 116° 44' 41.08707" W
UTM Zone 11: Easting 519668.7 Northing 5124012.7

West Between Sections 29 & 32 @ 2659.6 ft. Lewiston to Mountain House, Elk City Road.
NAD 27: 46° 15' 08.44" N 116° 43' 59.60" W
NAD 83: 46° 15' 08.02176" N 116° 44' 03.12543" W
UTM Zone 11: Easting 520487.7 Northing 5122106.7

North Between Sections 32 & 33 @ 363 ft. Lewiston to Mountain House, Elk City Road.
NAD 27: 46° 14' 20.72" N 116° 43' 20.95" W
NAD 83: 46° 14' 20.30100" N 116° 43' 24.47468" W
UTM Zone 11: Easting 521320.4 Northing 5120636.7

T33N, R3W

West Between Sections 4 & 9 @ 2722.5 ft. Lewiston to Mountain House, Elk City Road.
NAD 27: 46° 13' 24.24" N 116° 42' 43.94" W
NAD 83: 46° 13' 23.81993" N 116° 42' 47.46405" W
UTM Zone 11: Easting 522119.3 Northing 5118896.3

North Between Sections 9 & 10 @ 693 ft. Lewiston to Mountain House, Elk City Road.
NAD 27: 46° 12' 39.47" N 116° 42' 06.24" W
NAD 83: 46° 12' 39.04912" N 116° 42' 09.76358" W
UTM Zone 11: Easting 522932.1 Northing 5117517.4

North Between Sections 14 & 15 @ 1881 ft. Lewiston to Mountain House, Elk City Road.
NAD 27: 46° 11' 58.92" N 116° 40' 51.39" W
NAD 83: 46° 11' 58.49873" N 116° 40' 54.91316" W
UTM Zone 11: Easting 534540.9 Northing 5116272.1

West Between Sections 14 & 23 @ 4560 ft. Lewiston to Mountain House, Elk City Road.
NAD 27: 46° 11' 39.95" N 116° 40' 00.02" W
NAD 83: 46° 11' 39.52867" N 116° 40' 03.54299" W
UTM Zone 11: Easting 525644.3 Northing 5115691.1

North Between Sections 23 & 24 @ 4560.6 ft. Lewiston Mountain House, Elk City Road.
NAD 27: 46° 11' 33.37" N 116° 39' 35.83" W
NAD 83: 46° 11' 32.94870" N 116° 39' 39.35293" W
UTM Zone 11: Easting 526163.7 Northing 5115490.2

T33N,R2W

North Between Sections 19 & 20 @ 818 ft. Lewiston to Mountain House, Elk City Road.
NAD 27: 46° 10' 55.33" N 116° 37' 05.40" W
NAD 83: 46° 10' 54.90883" N 116° 37' 08.92273" W
UTM Zone 11: Easting 529393.7 Northing 5114330.8

West Between Sections 20 & 29 @ 2857.8 ft. Lewiston to Mountain House, Elk City Road.
NAD 27: 46° 10' 47.15" N 116° 38' 31.26" W
NAD 83: 46° 10' 46.72788" N 116° 38' 34.78271" W
UTM Zone 11: Easting 527554.1 Northing 5114069.7

North Between Sections 28 & 29 @ 3100 ft. Lewiston to Mountain House, Elk City Road.
NAD 27: 46° 10' 06.25.98" N 116° 35' 50.01" W
NAD 83: 46° 10' 05.55785" N 116° 35' 54.25269" W
UTM Zone 11: Easting 531017.6 Northing 5112815.6

North Between Sections 33 & 34 @ 5032.5 ft. Lewiston to Mountain House, Elk City Road.
NAD 27: 46° 09' 52.85" N 116° 34' 35.19" W
NAD 83: 46° 09' 52.42802" N 116° 34' 38.71277" W
UTM Zone 11: Easting 532624.2 Northing 5112418.7

North Between Sections 34 & 35 @ 1887.6 ft. Lewiston to Mountain House, Elk City Road.
NAD 27: 46° 09' 20.50" N 116° 33' 19.85" W
NAD 83: 46° 09' 20.11744" N 116° 33' 23.37292" W
UTM Zone 11: Easting 534245.4 Northing 5111430.2

T32N,R2W

East on the North Boundary Between Sections 2 & 35 @ 1650 ft. Lewiston to Elk City Road.
NAD 27: 46° 09' 02.20" N 116° 32' 56.36" W
NAD 83: 46° 09' 01.76694" N 116° 32' 59.88301" W
UTM Zone 11: Easting 534752.5 Northing 5110863.9

North Between Sections 1 & 2 @ 1650 ft. Lewiston to Mountain House, Elk City Road.
NAD 27: 46° 08' 15.62" N 116° 32' 04.30" W
NAD 83: 46° 08' 15.19558" N 116° 32' 07.82330" W
UTM Zone !!: Easting 535877.6 Northing 5109435.8

East Between Sections 1 & 12 @ 594 ft. Lewiston to Mountain House, Elk City Road.

NAD 27: 46° 08' 09.43" N 116° 31' 55.60" W

NAD 83: 46° 08' 09.00540" N 116° 31' 59.12335" W

UTM Zone 11: Easting 536065.3 Northing 5109245.8

up Gathered In Front Of Westlake Hotel For A Camp Meeting 1902

Courtesy of the University of Idaho Library Special Collections & Archives PG-5-093-1

T32N,R1W

North On The West Boundary Of Section 7 @ 1750 ft. Lewiston to Mountain House Road.

NAD 27: 46° 07' 35.05" N 116° 30' 49.09" W

NAD 83: 46° 07' 34.62449" N 116° 30' 52.52373" W

UTM Zone 11: Easting 537500.8 Northing 5108193.2

East Between Sections 7 & 18 @ 1947 ft. Lewiston to Mountain House, Elk City Road.

NAD 27: 46° 07' 17.49" N 116° 30' 21.54" W

NAD 83: 46° 07' 17.06396" N 116° 30' 25.06394" W

UTM Zone 11: Easting 538093.5 Northing 5107654.9

North Between Sections 17 & 18 @ 2329.8 ft. Lewiston to Mountain House, Elk City Road.

NAD 27: 46° 06' 48.65" N 116° 29' 34.82" W

NAD 83: 46° 06' 48.22338" N 116° 29' 38.34404" W

UTM Zone 11: Easting 539101.8 Northing 5106771.1



Group Gathered In Front Of Westlake Hotel For Camp Meeting-1902.

Courtesy of the University of Idaho Library Special Collections & Archives PG-5-093-1

North Between Sections 16 & 17 @ 99 ft. Lewiston to Mountain House, Elk City Road.

NAD 27: 46° 06' 26.64" N 116° 28' 19.33" W
NAD 83: 46° 06' 26.21380" N 116° 28' 22.85369" W
UTM Zone 11: Easting 540726.7 Northing 5106102.3

West Between Sections 16 & 21 @ 4158 ft. Lewiston to Mountain House, Elk City Road.

NAD 27: 46° 06' 25.16" N 116° 28' 04.59" W
NAD 83: 46° 06' 24.73400" N 116° 28' 08.11360" W
UTM Zone 11: Easting 541043.5 Northing 5106058.7

North Between Sections 21 & 22 @ 4191 ft. Lewiston to Mountain House, Elk City Road.

NAD 27: 46° 06' 14.15" N 116° 27' 05.44" W
NAD 83: 46° 06' 13.73457" N 116° 27' 08.96331" W
UTM Zone 11: Easting 542315.6 Northing 5105727.6

North Between Sections 22 & 23 @ 2739 ft. Lewiston to Mountain House, Elk City Road.

NAD 27: 46° 06' 00.43" N 116° 25' 49.99" W
NAD 83: 46° 06' 00.00529" N 116° 25' 53.51296" W
UTM Zone 11: Easting 5439384.4 Northing 5105315.5

East Between Sections 23 & 26 @ 3333 ft. Lewiston to Mountain House, Elk City Road.

NAD 27: 46° 05' 32.86" N 116° 25' 22.99" W
NAD 83: 46° 05' 32.43462" N 116° 25' 26.51305" W
UTM Zone 11: Easting 544524.3 Northing 5103915.1

North Between Sections 25 & 26 @ 3498 ft. Lewiston to Mountain House, Elk City Road.

NAD 27: 46° 05' 14.68" N 116° 24' 35.58" W
NAD 83: 46° 05' 14.25467" N 116° 24' 39.10295" W
UTM Zone 11: Easting 545546.5 Northing 5103915.1

North Between Sections 25 & 36 @ 2402.4 ft. Lewiston to Mountain House, Elk City Road.

NAD 27: 46° 04' 40.66" N 116° 23' 54.04" W
NAD 83: 46° 04' 40.23395" N 116° 23' 57.56306" W
UTM Zone 11: Easting 546446.5 Northing 5102871.8

North On East Boundary Of Section 36 @ 3300 ft. Lewiston to Mountain House Road

NAD 27: 46° 04' 20.62" N 116° 23' 23.61" W
NAD 83: 46° 04' 20.19362" N 116° 23' 27.13312" W
UTM Zone 11: Easting 548698.2 Northing 5102258.2

T32N,R1E

West on the South Boundary of Section 31 @ 396 ft. Lewiston to Mountain House Road.

NAD 27: 46° 03' 48.32" N 116° 22' 09.80" W
NAD 83: 46° 03' 47.89346" N 116° 22' 13.32312" W
UTM Zone 11: Easting 548698.2 Northing 5101273.7

T31N,R1E

South Between Sections 6 & 5 @ 1386 ft. Lewiston to Mountain House, Elk City Road

NAD 27: 46° 03' 35.14" N 116° 22' 04.11" W
NAD 83: 46° 03' 34.71300" N 116° 22' 07.63324" W
UTM Zone 11: Easting 548821.5 Northing 5101145.6

West Between Sections 5 & 8 @ 594 ft. Lewiston to Mountain House, Elk City Road.

NAD 27: 46° 02' 55.97" N 116° 20' 57.38" W
NAD 83: 46° 02' 55.54240" N 116° 21' 00.90343" W
UTM Zone 11 Easting 550267.3 Northing 5099670.5

North Between Sections 8 & 9 @ 4554 ft. Lewiston to Mountain House, Elk City Road.

NAD 27: 46° 02' 48.91" N 116° 20' 48.51" W
NAD 83: 46° 02' 48.48224" N 116° 20' 52.03348" W
UTM Zone 11: Easting 550459.7 Northing 5099454.1

Junction of Lewiston to Mountain House Road And Elk City Trail. (Projected)

NAD 27: 46° 02' 18.51" N 116° 20' 02.57" W
NAD 83: 46° 02' 18.08165" N 116° 20' 06.09369" W
UTM Zone 11: Easting 551454.8 Northing 5098524.1

North Between Sections 9 & 10 @ 1600.5 ft. Southern Branch Of Elk City Trail.

NAD 27: 46° 02' 19.38" N 116° 19' 33.30" W
NAD 83L 46° 02' 18.95215" N 116° 19' 36.82357" W
UTM Zone 11: Easting 552083.7 Northing 5098556.2

North Between Sections 10 & 11 @ 2409 ft. Southern Branch Of Elk City Trail.

NAD 27: 46° 02' 27.58" N 116° 18' 18.62" W
NAD 83: 46° 02' 27.15367 " N 116° 18' 22.14318" W
UTM Zone 11: Easting 553686.7 Northing 5098823.1

North Between Sections 11 & 12 @ 2920.5 ft. Southern Branch Of Elk City Trail.

NAD 27: 46° 02' 32.42" N 116° 17' 04.12" W
NAD 83: 46° 02' 31.99564" N 116° 17' 07.64283" W
UTM Zone 11: Easting 555286.6 Northing 5098986.7

South Between Sections 13 & 18 @ 300 ft. Southern Branch Of Elk City Trail.

NAD 27: 46° 02' 01.04" N 116° 15' 48.72" W
NAD 83: 46° 02' 00.61482" N 116° 15' 52.24304 W
UTM Zone 11: Easting 556916.1 Northing 5098033

T31N,R2E

North Between Sections 18 & 17 @ 1100 ft. Southern Branch Elk City Trail.

NAD 27: 46° 01' 22.19" N 116° 14' 33.12" W
NAD 83: 46° 01' 21.76456 N 116° 14' 36.64325" W
UTM Zone 11: Easting 558552.6 Northing 5096849.2

West Between Sections 17 & 20 @ 2244 ft. Southern Branch Elk City Trail.

NAD 27: 46° 01' 11.54" N 116° 13' 49.48" W
NAD 83: 46° 01' 11.76456" N 116° 13' 53.0029" W
UTM Zone 11: Easting 559494 Northing 5096529.5

North Between Sections 20 & 21 @ 4290 ft. Southern Branch Elk City Trail.

NAD 27: 46° 01' 01.67" N 116° 13' 17.90" W
NAD 83: 46° 01' 01.24576" N 116° 13' 21.42283" W
UTM Zone 11: Easting 560176 Northing 5096231.5

North Between Sections 21 & 22 @ 3118.5 ft. Southern Branch Elk City Trail.

NAD 27: 46° 00' 50.44" N 116° 12' 05.80" W
NAD 83: 46° 00' 50.01781" N 116° 12' 09.32228" W
UTM Zone 11: Easting 561729.8 Northing 5095900.3

North Between Sections 22 & 23 @ 1254 ft. Southern Branch Elk City Trail.

NAD 27: 46° 00' 31.77" N 116° 10' 46.62" W
NAD 83: 46° 00' 31.34854" N 116° 10' 50.14178" W
UTM Zone 11: Easting 563438.4 Northing 5095341.4

West Between Sections 23 & 26 @ 2722 ft. Southern Branch Elk City Trail.

NAD 27: 46° 00' 19.15" N 116° 10' 10.62" W
NAD 83: 46° 00' 18.72898" N 116° 10' 14.14161" W
UTM Zone 11: Easting 564216.7 Northing 5094959.9

North Between Sections 25 & 26 @ 3267 ft. Southern Branch Elk City Trail.

NAD 27: 45° 59' 58.01" N 116° 09' 34.10" W
NAD 83: 45° 59' 57.58919" N 116° 09' 37.62149" W
UTM Zone 11: Easting 565009 Northing 5094315.7

North On East Boundary Of Section 25 @ 841 ft. Southern Branch Elk City Trail.

NAD 27: 45° 59' 34.75" N 116° 08' 16.44" W
NAD 83: 45° 59' 34.33171" N 116° 08' 19.96029" W
UTM Zone 11: Easting 566687.2 Northing 5093615.7



Billie Allen, Gus Gustafson, Henry Holzman, Martin Hickman, Fred Franklin, & Charlie Wong Lee In Front Of The Blue Front Saloon, Elk City, Idaho 1908 (Saloon Burned Down In 1924. Courtesy Of The University Of Idaho Library. Special Collections & Archives PG-5-116-4a.

T31N,R3E

North Between Sections 31 & 32 @ 2838 ft. Southern Branch Elk City Trail.

NAD 27: 45° 59' 00.78" N	116° 05' 49.29" W
NAD 83: 45° 59' 00.36632" N	116° 05' 51.80819" W
UTM Zone 11: Easting 569882	Northing 5092602.8

East On South Boundary Of Section 34 @ 1254 ft. Southern Branch Elk City Trail.

NAD 27: 45° 58' 32.16" N	116° 04' 16.64" W
NAD 83: 45° 58' 31.74926" N	116° 04' 20.15678" W
UTM Zone 11: Easting 571868.2	Northing 5091742.2

East On South Boundary Of Section 35 @ 792 ft. Southern Branch Elk City Trail.

NAD 27: 45° 58' 31.78" N	116° 03' 08.07" W
NAD 83: 45° 58' 31.37114" N	116° 03' 11.58608" W
UTM Zone 11: Easting 573343.9	Northing 5091747.9

AND AT:

On Same Line @ 3894 ft Southern Branch Elk City Trail

NAD 27: 45° 58' 30.91" N	116° 02' 24.32" W
NAD 83: 45° 58' 30.50235" N	116° 02' 27.83563" W
UTM Zone 11: Easting 574285.7	Northing 5091732.3

T31N,R4E

East On South Boundary Of Section 32 @ 2178 ft. Southern Branch Elk City Trail.

NAD 27: 45° 58' 30.73" N 115° 59' 06.18" W
NAD 83: 45° 58' 30.32816" N 115° 59' 09.69311" W
UTM Zone 11: Easting 578549.5 Northing 5091779.8

North On East Boundary Of Section 26 @ 2534.4 ft. Southern Branch Elk City Trail.

NAD 27: 45° 59' 48.51" N 115° 54' 40.56" W
NAD 83: 45° 59' 48.11923" N 115° 54' 44.06899" W
UTM Zone 11: Easting 584232.5 Northing 5094256

East On The South Boundary Of Section 24 @ 3762 ft. Southern Branch Elk City Trail.

NAD 27: 46° 00' 16.06" N 115° 53' 46.38" W
NAD 83: 46° 00' 15.67205" N 115° 53' 49.88795" W
UTM Zone 11: Easting 585386.2 Northing 5095122.4

North Between Sections 32 & 33 @ 2574 ft. Southern Branch Elk City Trail

NAD 27: 45° 58' 56.57" N 115° 58' 23.20" W
NAD 83: 45° 58' 56.17012" N 115° 58' 26.71267" W
UTM Zone 11: Easting 579464.1 Northing 5092589.1

West Between Sections 28 & 33 @ 2620.2 ft. Southern Branch Elk City Trail.

NAD 27: 45° 59' 22.15" N 115° 57' 45.87" W
NAD 83: 45° 59' 21.75142" N 115° 57' 49.38233" W
UTM Zone 11: Easting 580257 Northing 5093389

North Between Sections 26 & 27 @ 2550 ft. Southern Branch Elk City Trail.

NAD 27: 45° 59' 47.82" N 115° 55' 54.80" W
NAD 83: 45° 59' 47.42598" N 115° 55' 58.31049" W
UTM Zone 11: Easting 5826358 Northing 5094213

T31N,R5E

East Between Section 19 & 30 @ 4327 ft. Southern Nez Perce Trail To Elk City.

NAD 27: 46° 00' 18.15" N 115° 52' 24.29" W
NAD 83: 46° 00' 19.76571" N 115° 52' 27.79630" W
UTM Zone 11: Easting 587150.3 Northing 5095249.8

North Between Sections 29 & 30 @ 4488 ft. Southern Nez Perce Trail To Elk City.

NAD 27: 46° 00' 09.58" N 115° 52' 09.40" W
NAD 83: 46° 00' 09.19608" N 115° 52' 12.90605" W
UTM Zone 11: Easting 587474.8 Northing 5095249.7

North Between Sections 28 & 29 @ 4158 ft. Southern Nez Perce Trail To Elk City.

NAD 27: 46° 00' 06.11" N 115° 50' 54.38" W
NAD 83: 46° 00' 05.72927" N 115° 50' 57.88455" W
UTM Zone 11: Easting 589089.9 Northing 5094867.8

North Between Sections 27 & 28 @ 1584 ft. Southern Nez Perce Trail To Elk City.

NAD 27: 45° 59' 39.91" N 115° 49' 39.32" W
NAD 83: 45° 59' 39.53251" N 115° 49' 42.82277" W
UTM Zone 11: Easting 590716.2 Northing 5094082.9

T30N,R3E

South Between Sections 3 & 2 @ 924 ft. Southern Branch Elk City Trail.

NAD 27: 45° 58' 22.77" N 116° 03' 19.91" W
NAD 83: 45° 58' 22.36095" N 116° 03' 23.42065" W
UTM Easting 563398.7 Northing 5091403.4

North On The East Boundary Of Section 1 @ 3069 ft. Southern Branch Of Elk City Trail.

NAD 27: 45° 58' 11.57" N 116° 00' 52.36" W
NAD 83: 45° 58' 11.6514" N 116° 00' 55.83439" W
UTM Zone 11: Easting 57272.8 Northing 5091159.7

South Between Sections 1 & 2 @ 1000 ft. Southern Branch Of Elk City Trail.

NAD 27: 45° 58' 21.78" N 116° 02' 07.81" W
NAD 83: 45° 58' 21.37294" N 116° 02' 11.32531" W
UTM Zone 11: Easting 574644.3 Northing 5091454.9

T30N,R4E

South Between Sections 5 & 6 @ 2547.6 ft. Southern Branch Elk City Trail.

NAD 27: 45° 58' 08.47" N 115° 59' 36.77" W
NAD 83: 45° 58' 08.06760" N 115° 59' 40.28336" W
UTM Zone 11: Easting 5778999.9 Northing 5091084.4

East On The South Boundary Of Section 32 @ 1700 ft. Southern Branch Elk City Trail.

NAD 27: 45° 58' 30.87" N 115° 59' 13.04" W
NAD 83: 45° 58' 30.46831" N 115° 59' 16.55325" W
UTM Zone 11: Easting 578477.2 Northing 5091795.6

Coordinates For Points Of Interest

William Craig's Cabin

From The South East Corner Of Section 24, East 590 ft; Then North 85° East For 485 ft.

NAD 27: 46° 21' 20.38" N 116° 45' 55.82" W
NAD 83: 46° 21' 19.96910" N 116° 45' 59.35594" W
UTM Zone 11: Easting 517965.2 Northing 5133578.9

Area Where Some 200 Of Perry's Troops Camped On The Evening Of June 22, 1877.

NAD 27: 46° 16' 13.31" N 116° 32' 00.36" W
NAD 83: 46° 16' 12.90349" N 116° 32' 03.88248" W
UTM Zone 11: Easting 353875.6 Northing 5124180.3

The Location Of The Cottonwood Way Station

NAD 27: 46° 02' 48.40" N 116° 20' 50.41" W
NAD 83: 46° 02' 47.97218" N 116° 20' 53.93349" W
UT Zone 11: Easting 550419 Northing 5099438.1

General Area Where Volunteers Fought A Battle With Nez Perce Forces On July 5, 1877

NAD 27: 46° 02' 16.31" N 116° 19' 33.01" W
NAD 83: 46° 02' 15.91202" N 116° 19' 36.47361" W
UTM Zone 11: Easting 552092.1 Northing 5098462.4



Yellow Bull About 1871 Source Unknown
From The Collections Of James G. Huntley

1877 Nez Perce War Fortifications On Battle Ridge

West Between Sections 28 & 33 @ 462 ft "Rifle Pits" Occupied By General Howard & Troops
Bear North 80* East For 198 ft. & S80*W For 330ft.

Position On Section Line:

NAD 27: 46* 04' 36.81" N	115* 57' 14.92" W
NAD 83: 46* 04' 36.42267" N	115* 57' 18.42937" W
UTM Zone 11: Easting 580795.4	Northing 5103109.4

Northeast Side Of Rifle Pit:

NAD 27: 46* 04' 37.18" N	115* 57' 12.26" W
NAD 83: 46* 04' 36.79279" N	115* 57' 15.76932" W
UTM Zone 11: Easting 580852.4	Northing 5103121.6

Southwest Side Of Rifle Pit:

NAD 27: 46* 04' 36.31" N	115* 57' 19.54" W
NAD 83: 46* 04' 35.92247" N	115* 57' 23.04945" W
UTM Zone 11: Easting 580696.3	Northing 5103092.7

North Between Sections 33 & 34 @ 3234 ft. Indian Rock Breast Works, 4 ft. high and occupied by the
Nez Perce Indians During The Clearwater Battle On July 11 &12, 1877, Bear N80*E For 132 ft. &
S80*W For 429 ft.

Position On Section Line:

NAD 27: 46* 04' 16.47" N	115* 57' 08.54" W
NAD 83: 46* 04' 16.08216" N	115* 57' 12.04948" W
UTM Zone 11: Easting 580940.7	Northing 5102483.5

Northeast Side Of Breast Works:

NAD 27: 46* 04' 16.60" N	115* 57' 06.41" W
NAD 83: 46* 04' 16.21225" N	115* 57' 09.91945" W
UTM Zone 11: Easting 580986.4	Northing 5102488.1

Southwest Side Of Breast Works:

NAD 27: 46* 04' 16.10" N	115* 57' 12.44" W
NAD 83: 46* 04' 15.71199: N	115* 57' 15.94955" W
UTM Zone 11: Easting 580857	Northing 5102471

INTEGRITY

The northern branch of the Elk City Trail has been obliterated by farming, road construction and a variety of other human activity. After reviewing the trail location on Google Earth there is a very slight chance that some ruminant of the original tread may still exist where the route crossed Lawyers Canyon in Township 33 North, Range 1 East, Section 26. It also appears that a short section of the trail might exist on the ridge just south of Rabbit Creek in Township 31 North, Range 4 East, Section 4.

The southern branch of the Elk City Trail followed the wagon/stage road from Lewiston to Cottonwood and the road still exists in most places today. However two sections of the road have shifted south over the years and some of the original tread may still be found in Township 32 North, Range 2 West, where in the 1890's, the road shifted some 3 miles south to where the road is today. Perhaps one mile of the original 1870's road/trail may still exist in this section.

It should be noted that the aforesaid route is in Nez Perce & Lewis counties and can not be further addressed by the Idaho County Historic Preservation Commission. Although this writer will send copies of this assessment to those counties to inform them of his findings.

The author has already addressed the status of the wagon road in Idaho County in the Lewiston-Mountain House Wagon Road Assessment. Further discussion here would be redundant. A review on Google Earth indicates that northeast of Grangeville, where the trail crossed Butcher Creek, there is slight chance that the original tread of the trail could be found. Also it appears that in Township 31 North, Range 4 East, Section 33 there could also be evidence of the old trail. The remaining trail across the Camas Prairie and east of the South Fork of the Clearwater River has been destroyed by farming and other human activities.

From the common point where the two branches of the trail meet, most of the trail still exists from that point to Elk City which has been identified and marked by the U. S. Forest Service.

SIGNIFICANCE

The trail was significant in the early 1860's as a route into the gold fields of Central Idaho and was used by the early miners, settlers and merchants. Portions of both branches of this trail played a significant role in the Nez Perce Indian War of 1877, as troops from Fort Lapwai came south into Idaho County to confront the hostiles. Although there has been a lot of history and historic tales written about that portion of the Elk City Trail which followed the Southern Nez Perce Trail, very little has been written about the trail from Cottonwood East to the South Fork of the Clearwater River or from Craig's Junction to Kamiah.

It is not known how long various sections of the trail were in use, but a pamphlet written in 1980 by Don Morrow, who was born in the early twentieth century can give one a good estimate. By 1893 a wagon road had been built from Mount Idaho to the town of Clearwater. This in combination with the opening of the Nez Perce Reservation to homesteading made the Cottonwood branch of the trail obsolete, which was probably abandoned and/or destroyed by farming. The northern branch may have been used until 1900 when the railroad was built up the Clearwater River as far as Kooskia.

RECOMENDATIONS

- (1.) Those segments of the trail that may still exist should be surveyed to determine the remaining values of setting, location, association and other values. There is little possibility that a small portion of the route in Lewis County could be eligible for NRHP consideration.
- (2.) The Historic Preservation Commissions of the three counties should determine if the "associated sites" are important enough to warrant historic interpretation.

REFERANCES

The following books and materials were used to produce this assessment.

Victor, Francis Fuller

1870 The River Of The West (The Adventures Of Joe Meek).
Mountain Press Publishing Company, Missoula, Montana 1983,

Western Historical Publishing

1903 Illustrated History Of North Idaho.

Parker, Rev. Samuel

1838 Parker's Exploring Tour Beyond The Rocky Mountains).
Reprinted 1967 Limited Edition, Ross & Haines, Minneapolis, Minnesota.

Nebraska Edition

The Definitive Journals Of Lewis And Clark,
John Ordway And Charles Floyd, Volume #9.

Brady, Cyrus Townsend

1907 Northwest Fights And Fighters, Reprinted 1928,
Double Day, Doran & Company, Garden City, New York.

Elsensohn, Sister M. Alfreda

Pioneer Days In Idaho County, Volumes 1 & 2.
The Caxton Press, LTD Caldwell, Idaho

Idaho County Free Press

1900 Though 1924 Editions

Defenbach, Byron

1933 Idaho, The Place And Its People
The American Historical Society, Inc.
Chicago-New York.

BLM-GLO

Land Survey Records And Plats.

Louise Stockard Hodge

The History Of Greer, Idaho

L. V. McWhorter

Yellow Wolf, His Own Story
Caxton Printers LTD, Caldwell, Idaho.



Elk City Circa 1930, Source & Photographer Unknown
From the Collections of James G. Huntley

