

ASSESSMENTS OF  
LEWISTON TO KAMIAH & PIERCE CITY WAGON ROADS  
INDIAN TRAIL FROM LAPWAI TO KAMIAH  
INDIAN TRAIL FROM KAMIAH TO NORTH FORK OF CLEARWATER RIVER  
LEWIS & CLARK 1806 RETURN TRAIL FROM LENORE, IDAHO TO THE CONFLUENCE  
OF ELDORADO CREEK WITH LOLO CREEK.



GREER IDAHO 1910

Courtesy of the University of Idaho Library Special Collections & Archives PG 5-091-1

*The Mapping And locations Of The Wagon Roads and Early Trails From Lawyers Canyon North To  
Pierce, West To Lewiston And East To The Musselshell Ranger Station.*

For :

The Idaho County Historic Preservation Commission

&

The Idaho State Historical Society

Assessment Prepared by:

James G. Huntley

130 Grangeville Truck Route

Grangeville, Idaho 83530

November 2017 – February 2018

## INTRODUCTION

From 1867 to 1934, the General Land Office contracted with private land surveyors to survey and subdivide the Townships in Idaho, Nez Perce, Lewis and Clearwater Counties. The contracts required the setting of section corners and the recording of features on the ground, such as roads, trails, cabins, fences and fields. Some 150 years later, it is the features requirement that allows the researcher to establish these locations on the ground and on maps. This writer began reviewing the old survey notes and plotting the location of trails and wagon roads on modern maps in 2012, because of their historic significance in the development of North Central Idaho.

To date, three assessments representing some 415 miles of historic roads and trails have been completed, and two can be found on the Idaho County Web Page. The following assessment deals with the Lewiston to Kamiah, River City, Oro Fino, Pierce City Wagon Road/Trail, the “Old” Indian Trail from Lapwai to Kamiah, the Indian Trail from Kamiah to the North Fork Of The Clearwater River and the Return Trail of Lewis & Clark in May & June of 1806.

It should be noted that the names used in this assessment are those given by the early surveyors. Oro Fino refers to the original settlement located some two miles south of Pierce and this writer has not been able to determine the location of River City. Perhaps it was in reference to either Greer or Kamiah. The reference to the “Old” trail from Lapwai could signal the route was seeing little or no use at the time of the land survey. This trail was very difficult to traverse in some places.

All four of the routes in this assessment likely existed long before the first Euro-Americans arrived in 1805 with the Lewis & Clark expedition. It is also likely that the early wagon roads followed the existing Native-American trails. Soon after gold was discovered at Pierce in 1861, William Craig traveled to what is now known as Greer and started a ferry to haul miners, their stock, and equipment across the Middle Fork of the Clearwater River. It was during this same year the route traveled by Craig became known as a wagon road, and a wagon road to Kamiah soon followed Craig's path, as it was extended into Kamiah also following an ancient trail.

## METHODOLOGY

The routes found herein were noted and plotted where they cross section lines, and are based on the survey notes of Allen Thompson 1867, David Thompson 1873, Edson Briggs 1890-93, Herman Grandon 1883, James Robb 1897, James Ross 1897 and Thomas Bates 1926. Routes were plotted using a Terrain Navigator mapping program, which allowed the recording of 1927 NADCON coordinates. The 1927 data was then converted to 1983 NADCON using North American Datum Conversion 2.11. In the future, researchers can use GPS units to locate any given position on the ground.

Accuracy of the coordinates is dependent on the maps being used, because the township, range, and section lines shift slightly depending on the year the map was made. However, an accuracy of some ten feet should be attainable by starting at any given section corner and following the original survey distances along the section line. Transfer of coordinates to Google Earth has an unknown accuracy, because they have never been ground checked.

Points of historic importance and interest have been located using the descriptions found in survey notes and historic texts. For example, the camp sites of Lewis and Clark were located using the mileage and descriptions in expedition journals and water sources noted on the maps being used. They are not intended to be entirely accurate, but to give future archeologists and historians a general area to research and explore for evidence of use.

## PHYSICAL SETTING

The trails and wagon roads in this assessment cover a large area of North Central Idaho and include the area from Lewiston to the Clearwater River at Kamiah and from Lawyers Canyon north to present day Pierce.

Most of the area in this assessment is underlain by Miocene basalt flows of the Columbia River group. The lava flows began some 17 million years ago with the Imnaha basalt and ended about 6 million years ago, with the Saddle Mountains basalt. During the middle period, the Nez Perce plateau was uplifted and the Lewiston Basin subsided.

The area is characterized by rolling basalt plateaus dissected by deep canyons. The plateaus are mantled with deposits of loess that are up to ten feet deep. The lowest elevation is 720 feet at Lewiston, and most of the area consists of rolling plateaus that range in elevation from 2000 to 4000 feet. The town of Nezperce is located on one of these plateaus, at an elevation of 3200 feet. Native vegetation is bunch grass prairie at the lower elevations and coniferous at the higher elevations.

The climate in the area is influenced by the wide range in elevations and the topography found in the area. In the low plateaus and valleys near Lewiston the climate is relatively dry and mild. The mildness, particularly in winter, is a result of warm Pacific air, and the sheltering effect of the higher plateaus, that almost completely surround the valley.

The higher plateaus are significantly cooler and more moist than the lower reaches. In summer, conditions are favorable for the formation of convective rain showers and thundershowers. Winters are cold but generally not severe. In January, the average temperature at Lewiston is about 32 degrees F and 28 degrees F at Nezperce. In July, the average temperature is about 74 degrees at Lewiston and 65 degrees at Nezperce.

Total annual precipitation is about 13 inches at Lewiston and 22 inches at Nezperce. The higher elevations around Craigmont and Nezperce have a growing season, for most crops, between April and September. Average snowfall is about 18 inches at Lewiston and 50 inches at Nezperce.<sup>1</sup>

The elevation along these routes change gradually until they reach a peak of some 3800 feet north of Craigmont and east of Craig's Junction. The elevation at Lewiston is some 720 feet, 1160 feet at the mouth of Lawyers Creek, 1050 feet at the mouth of Lolo Creek, 985 feet at Canoe Camp and some 882 feet at the Lenore boat ramp.

---

<sup>1</sup> Soil Survey of Lewis and Nez Pierce Counties, by Thomas W. Hahn, Natural Resources Conservation Service



William Clark And Meriwether Lewis  
Photograph Copied From Wordpress.Com.

#### LEWISTON TO KAMIAH & PIERCE CITY WAGON ROADS

The wagon road began in Lewiston and followed the same route as the Elk City Trail, as far as what became known as “Craig's Junction”. At that point the trail turned southerly and the wagon road continued eastward. About two miles east of the junction and one mile north of present day Craigmont, the road reached an elevation of 3800 feet. From this point the road continued northeasterly passing through present day Mohler, where it followed the present highway along Holes Creek. Continuing east it crossed Long Hollow Creek near the Range line of 2 & 3 East and some 2.75 miles northwest Nezperce. The junction of the road to Pierce City was at this point and it headed north to the ferry just above Greer. The road to Kamiah continued southeast to Kamiah. From Lewiston it is fifty one miles to Kamiah and 76.2 miles to Pierce .

#### “OLD” INDIAN TRAIL FROM LAPWAI TO KAMIAH

The exact starting point of this trail is unknown. This writer began the assessment approximately 2000 feet north of the Lapwai city limits. From that point, the trail went up Tom Beall Creek for some one and one half miles, where it left the creek and followed the ridge between the middle fork and south fork of the creek. The trail continued up this divide until reaching a point between sections 22 & 23 in T36N ,R3W, where it turned southeast and crossed Cottonwood Creek. It continued southeast until it crossed the Kettering Grade in T36N, R2W, Section 31. From this point it continued east for some three miles, where it crossed a fork of Cottonwood Creek and ascended in a southeast direction up the divide between those two branches. The trail then continued southeast across T35N, R1W, holding a course some 3000 feet north of Six Mile Creek. Entering T35N,R1E the trail became

very difficult, switchbacking its way across Big Canyon and Little Canyon Creeks. Continuing southeasterly through T34N,R1E, it apparently switchbacked its way across Hole Creek. It then entered T34N,R2E, where it crossed the Pierce Wagon Road and merged with the Kamiah Wagon Road in Section 21, some 2.25 miles northeast of Nezperce. The trail and wagon road share the same route into R3E, then they separate in T33N,R3E Section 3 before entering Kamiah. From Lapwai to Kamiah is approximately 42 miles.

#### INDIAN TRAIL FROM KAMIAH TO THE NORTH FORK OF THE CLEAWATER RIVER

Beginning in T33N,R3E, this trail climbed some 1400 feet in about 2 miles into T34N and then followed the same route as the the old trail to Lapwai,<sup>5</sup> until it reached a point in the northwest quarter of Section 21, T34N,R2E. At this point the trail turned north, paralleling the Pierce Wagon Road at about a one mile distance and reaching a altitude of some 3200 feet. The trail turned northwest as it entered T35N and crossed the Pierce Wagon Road in Section 29 and continued in a northwest direction entering Range 1 East. The trail then roughly paralleled the range line going north until reaching Section 1, T35N, R1E. Upon entering T36N,R1E the trail continued north until reaching the section line between Sections 13 & 14, where it turned northeast and proceeded to switchback its way down a steep ridge to the Middle Fork of the Clearwater River. At this point the trail followed the river downstream to modern day Canoe Camp. Total distance from Kamiah to the North Fork of the Clearwater at Canoe Camp is 34 miles.

#### LEWIS & CLARK RETURN TRAIL OF 1806-FROM BEDROCK CREEK TO CONFLUENCE OF ELDORADO CREEK WITH LOLO CREEK

This writer began recording this trail approximately 4 miles west of Lenore at Bedrock Creek, but totaled the mileage from Pine Creek where it is believed the expedition spent the night of May 6, 1806. From Bedrock Creek the trail went upriver above some bluffs for about 4.2 miles. Knowing the current would carry them some distance down stream, the expedition turned south, crossing the river just above the present day boat ramp at Lenore. The elevation at the boat ramp is about 880 feet. This writer, based on the journals, believes they then proceeded up Angel Ridge where the expedition reached an elevation of 3000 feet before descending into Big Canyon Creek and camping a short distance above the present town of Peck, on May 7, 1806. The trail then ascended the ridge north of Little Canyon Creek and continued on the divide between the Middle Fork of the Clearwater and Little Canyon Creek. After traveling about 4 miles, the author believes the expedition camped on the night of May 8, 1806 on a small tributary of the Middle Fork of the Clearwater at an elevation of 3000 feet. The trail continues east to the section line between Sections 14 & 13 T36N, R1E, where this trail joins the Kamiah to the North Fork Trail. The expedition then followed this trail into T34N, R2E, where it turned south to Lawyers Canyon. It should be noted the party camped the night of May9,1806 at "Twisted Hair's Camp", which this writer believes was in T36N,R2E, Section 36. Sargent Ordway calculated the mileage from "Twisted Hair's Camp" to the Lawyer Canyon Camp as 20 miles. This writer has measured a map distance of 19.6 miles to the point described by Ordway. The total distance from Pine Creek to Broken Arms Camp on Lawyer Creek is some 44.5 miles, which was traveled in four days.<sup>2</sup> The total distance to the junction of the Lolo Trail and the Crane Meadow Trail to Weippe, Idaho is 60.21 miles, and from this junction to the confluence of Eldorado Creek is miles 70.81 miles.

---

<sup>2</sup> The Definitive Journals of Lewis & Clark, John Ordway and Charles Floyd, Volume #9 of the Nebraska Edition Pages 306-308.

## HISTORIC OVERVIEW/CHRONOLOGICAL TIME LINE

1805-06: The first Euro-Americans to pass through Idaho was the Lewis & Clark Expedition in 1805. The expedition ventured through Idaho, Clearwater and Nez Perce Counties on the way to the Pacific Ocean, and on their return trip in 1806, they also passed through Lewis County.<sup>3</sup>

In 1806 the expedition crossed the Clearwater River some 13 miles above the Potlatch River, ascended Angel Ridge, proceeded down off the ridge through the site of present day Peck, Idaho, and camped the night of May 7, 1806 at the forks of Big Canyon and Little Canyon Creeks. On May 8<sup>th</sup> they ascended the ridge on the north side of Little Canyon Creek and after getting a late start, traveled on some 4 miles, camping at the head of a small stream that flows north to the Middle Fork of the Clearwater River. On May 9<sup>th</sup> after traveling only 6 miles south along the trail from Kamiah to Canoe Camp, the expedition camped at Twisted Hair's Camp. On May 10<sup>th</sup> the expedition set off southeasterly along this same trail, and after traveling some 20 miles, they camped at Broken Arm's village on Lawyer Creek until May 13<sup>th</sup>.

May 13, 1806: The expedition moved down Lawyers Creek to its mouth, and the following day crossed the Clearwater River and set up camp on the north side of the river. On May 27<sup>th</sup> Ordway, Frazer and Wiser were sent to gather salmon on the Snake River, as the salmon run had not started on the Clearwater.<sup>4</sup> *It is apparent from Ordway's journal and this writer's work in plotting the old trails noted by the early surveyors that Dr. Russell made an error in interpreting Ordway's journal. The journal reads in part: "Swam our horses and waived on to [the?] village on commeap cr[ek]. Three young men went on with [us] up Sd. Creek about 5 miles.*

*Dr. Russell assumed this meant the steep hill was 5 miles from the mouth of the creek. However, I believe Ordway meant they went up to Broken Arm's village, which he knew was four miles. At that village three young men joined his party and they traveled an additional 5 miles on up the creek for a total of 9 miles from its mouth. This distance has been measured on my trail maps as 4.5 miles or a total of 8.5 miles from the mouth of the creek.*

*In addition, at that point there is a steep hill going up to an Indian trail that runs northwest and eventually crosses the Northern Branch of the Elk City Trail before descending into Lawyer Creek. From the point where the trail meets the creek, Ordway estimated the distance as 8 miles. This writer has measured the distance on a map and by following the creek the distance to the campsite measures 7.7 miles. Dr. Russell believed the party went overland across Icicle Flats. However, the early surveys did not record any trails going overland where Russell suggested.*

1811: Donald McKenzie, with four men, came across the Seven Devils Mountains and traveled down the Little Salmon River to Riggins. He continued down the river and at present day Lucile he found Robert McClellan, who had also used the same route a few days earlier. At this point McKenzie took control of the group and proceeded down river to White Bird where they "struck" an Indian trail that led them past Mount Idaho and on to Stites. From there the trails eventually led them to the Clearwater River and on down stream to Lewiston.<sup>5</sup>

---

3 IDAHO-The Place And Its People, Byron Defenbach, Volume #1, The American Historical Society, 1933 Pages 80-91.

4 The Definitive Journals of Lewis & Clark, John Ordway and Charles Floyd, Volume #1 of the Nebraska Edition, Pages 306-309.

5 IDAHO-The Place And Its People, Byron Defenbach, Volume #1, The American Historical Society, 1933, Pages 118-119.





Aerial View Of Peck, Idaho 1914

Courtesy of the University of Idaho Library Special Collection & Archives, PG5-004-1a.

1832: In July of 1832 the battle of Pierre's Hole was fought, and although not in North Central Idaho, three people who participated in the fight would later have an impact on the history of this area. The fight was between a band of Blackfoot carrying a Hudson Bay Company flag and the Sublette brothers, who were accompanied by Flathead and Nez Perce Indians. The leader of the Nez Perce was Hal-hal-tlos-sot, who later became known as Lawyer. Lawyer was the son of Twisted Hair, the chief who greeted the Lewis & Clark expedition some twenty-six years prior. William Craig, who was a friend of Lawyer, and Joe Meek were both members of this party. Craig would settle on Lapwai Creek, just south of Jacques Spur, in 1836.<sup>6</sup>

William Sublette, who owned the Rocky Mountain Fur Company, hired Meek as a hunter and trapper in the spring of 1828. In 1832 Sublette and his trappers came up the Payette River and camped at Payette Lake. Joe Meek then led a party of four men north to the Salmon River, crossed the river and camped at the head of a small tributary stream in the Florence Area.<sup>7</sup>

1835: The Reverend Parker, with a party of Nez Perce Indians came over the Southern Nez Perce Trail and crossed the Camas Prairie, camping at Yellow Bull spring in October of that year.<sup>8</sup> *(Parker's description of the spring and the bluff near it fits Yellow Bull spring and several Indian trails also passed near the spring. The author, in late September of 2017, looked at the flow from Yellow Bull Spring as it flowed down Red Rock Creek. It was producing a constant flow of over 20 gallons a minute.*

8.

<sup>6</sup> IDAHO-The Place And Its People, Byron Defenbach, Volume #1, The American History Society, 1933 Pages 160-163.

<sup>7</sup> River Of The West, Frances Fuller Victor, Volume #1, Pages 129 & 130.

<sup>8</sup> Parker's Exploring Tour, Beyond The Rocky Mountains, Rev. Samuel Parker A. M. Pages 114-117.



1836: The Reverend Henry Spalding and his wife Elisa arrive at Lapwai and build a cabin some two miles above the mouth of Lapwai Creek, at the foot of Thunder Hill. About the same time, William Craig was settling a few miles south of the Spalding cabin. In 1837 the Spaldings moved down the creek and built where the monument to the Spaldings stood in 1933. The building existed until 1902, and in later years was used as a stable.<sup>9</sup>

1847: Spalding's 10 year old daughter was going to school at the Whitman mission when in November the Indians killed the Whitmans and twelve other white people associated with the mission. Spalding, who had been traveling to the mission to see his daughter, heard about the killings and returned to Lapwai. Upon arriving at his mission he found the place ransacked, but his family, who had taken refuge with William Craig, was unharmed.<sup>10</sup>

1848: Idaho becomes a part of the Oregon Territory.

1853: On March 17<sup>th</sup>, the Washington Territory was created and all of Idaho, north of the Salmon River, was included in the new territory.<sup>11</sup>

1861: Gold was discovered in the Pierce area, and William Craig and Jacob Schultz built a ferry, just up stream from the present site of Greer, which carried people on their way to the Pierce gold fields.<sup>12</sup> In May of that year, a party of 52 men left the Pierce District to explore the upper reaches of the Clearwater Basin. It is very likely they used the same trail that would become known as the Lewiston to Pierce City Wagon Road as far south as its junction with the Old Indian trail from Lapwai to Kamiah. From Kamiah they followed the Southern Nez Perce Trail into the Elk City area. Then in June, a Mr. Athey cut a wagon road from Lewiston to Pierce City and a Mr. Mulkey drove the first wagon from Lewiston into Oro Fino.<sup>13</sup>

1861: also saw another party of men come into North Central Idaho looking to strike it rich. This party camped for a time on Whiskey Bill Creek, which flows through the eastern edge of present day Grangeville. This group continued over the White Bird Divide, worked their way up the Salmon River to Slate Creek and then up Slate Creek, reaching the head waters of the creek in the fall of 1861. Here they found gold and in October of that year laid out the town of Florence.<sup>14</sup>

1863: A new treaty was signed by the Nez Perce Indians, and it was this treaty that ceded the greater portion of the Camas Prairie to the United States. However, Congress did not confirm the treaty for several years and title could not be obtained until Congress acted.<sup>15</sup>

1867: Allen Thompson began surveying a large part of the Camas and Nez Perce Prairies. He was followed by numerous other surveyors from 1870 to the early 1900's.<sup>16</sup>

---

9 IDAHO-The Place And Its People, Volume #1, Byron Defenbach, 1933 Pages 202 & 203.

10 IDAHO-The Place And Its People, Volume #1, Byron Defenbach, 1933 Pages 205, 206 & 222.

11 IDAHO-The Place And Its People, Volume #1, Byron Defenbach, 1933 Page 239.

12 History Of Greer Idaho, Researched and Written by Louise Stockard Ells. Hodge.

13 IDAHO-The Place And Its People, Volume #1, Byron Defenbach, 1933 Pages 267 to 271.

14 Pioneer Days In Idaho County, Volume #1, Sister M. Alfreda Elsensohn, Pages 37 & 38.

15 Illustrated History Of North Idaho, Western Historic Publishing Company, 1903, Pages 138 & 139.

16 BLM-GLO land records & survey notes.

1870: Jacob Schultz took over running the ferry at Greer from James & Caleb Witts who had been operating it for some time.<sup>17</sup>

1875: On January 20<sup>th</sup>, Joe Meek, mountain man, trapper, U.S. Marshal, past member of the U.S. House of Representatives, and a man who shaped the history of Idaho, departed this world. After his first wife was murdered, Meek married a Nez Perce woman who was born in 1820 on the Clearwater River near Kamiah. She had five children by Meek and their children all received good allotments after the Nez Perce War. His wife, Virginia, died in 1900 at age of 80.<sup>18</sup>

1877: The Nez Perce Indian War broke out after several settlers were killed who were homesteading on the Salmon River.<sup>19</sup> During this war the Greer Ferry was destroyed, but in the fall of that year John Greer replaced it with “a fine boat.”<sup>20</sup>

1885: The Town of Grangeville was laid out and surveyed by F.R. Turner. The original town consisted of nine regular blocks, 200 feet by 400 feet. Bounded by North Street, South street, Mill Street and Coon Street, now known as State Street.<sup>21</sup> (*Mr. Coon was the first to build on this street at the corner of what is now Main & State Streets.*)

1887: J.B. Rice located and laid out the town of Westlake on the Lewiston to Mountain House Wagon Road. The town was named after his wife, Sarah (Westlake) Rice.<sup>22</sup>

1889: The drought in North Central Idaho, that began in 1889, was in its second year and created a depression among the miners as the creeks dried up. The stockmen and farmers were also feeling the effects and in September a large wildfire threatened the town of Grangeville. On the west side of Three Mile Creek, flames from the fire were forty to fifty feet high.<sup>23</sup>

1890: John Greer constructed a new wagon road to the Nez Perce Prairie<sup>24</sup>

1895: In November of this year, George Rowton on behalf of himself and one hundred others, made application to the government to set aside 104 acres of vacant land lying along the east side of the South Fork of the Clearwater River and south side of the Middle Fork of the Clearwater River, near the junction of the two streams, for a town site. The application was granted and the town of Stuart began. The town was named after James Stuart, a Nez Perce Indian and land surveyor. Stuart was a leading merchant of the town in 1903. When the first train arrived, the railroad called the station Kooskia, because a station named Stuart already existed. For the sake of harmony the town adopted the same name.

Meanwhile, George W. Tamblin surveyed the town site of Nezperce and probate judge P.E. Stookey filed on a quarter section of land on behalf of the people and lots were distributed.<sup>25</sup>

---

17 History Of Greer Idaho, Researched and Written by Louise Stockard Ells. Hodge.

18 Illustrated History Of North Idaho, Western Historic Publishing Company, 1903, Page159.

19 Illustrated History Of North Idaho, Western Historic Publishing Company, 1903, Pages 52 & 53.

20 Illustrated History Of North Idaho, Western Historic Publishing Company, 1903, Pages 1046 & 1047.

21 Illustrated History Of North Idaho, Western Historic Publishing Company, 1903, Page 419.

22 Illustrated History Of North Idaho, Western Historic Publishing Company, 1903, Page 428.

23 Illustrated History Of North Idaho, Western Historic Publishing Company, 1903, Page 401.

24 Illustrated History Of North Idaho, Western Historic Publishing Company, 1903, Pages 1046 & 1047.

25 Illustrated History Of North Idaho, Western Historic Publishing Company, 1903, Pages 117, 404, 405, 426.

1896: M.B. Morrow laid out the town of Morrow on the south side of the stage road from Lewiston. The stage road followed the old trail from Lewiston into Idaho County.<sup>26</sup>



Pierce, Idaho-1893

Courtesy of the University Of Idaho Library, Special Collections & Archives PG-5-085-2b.

1897: Jacob Stites homesteaded along the South Fork of the Clearwater River and in May of 1899 relinquished his right to 40 acres on which the town of Stites was erected.<sup>27</sup>

1899: The Clearwater Short Line Railroad was completed as far as Kooskia, and would eventually stop at Stites.<sup>28</sup> When the railroad was completed to Kooskia, John Greer (*sometimes called Jack*) and John Dunn became partners and laid out the Greer town-site on the Greer homestead.<sup>29</sup>

1900: Between 1898 & 1900 Post Offices were established in Ilo, Volmer, Forest, Gifford and twenty-one other small towns in North Central Idaho.<sup>30</sup>

1911: Clearwater County became the twenty-fifth county and Lewis became the twenty-seventh county in this year. (*In 1861 the Washington Territorial Legislature Created Nez Perce and Idaho Counties. The Camas Prairie was part of Nez Perce County until 1875 when the legislature moved the boundary of Idaho County north to Lawyer Creek.*)<sup>31</sup>

---

26 Illustrated History Of North Idaho, Western Historic Publishing Company, 1903, Page 118.

27 Illustrated History Of North Idaho, Western Historic Publishing Company 1903, Page 424.

28 Illustrated History Of North Idaho, Western Historic Publishing Company, 1903, Page120,

29 History Of Greer, Idaho, Researched and Written by Louise Stockard Ells. Hodge.

30 Illustrated History Of North Idaho, Western Historic Publishing Company, 1903, Page119.

31 IDAHO-The Place and Its People, Byron Defenbach, The American Historic Society, 1933, Pages 479 to 520.

1916: The highway known today as U.S.12, was designated as Star Route 9 in 1916 and construction started in 1920.<sup>32</sup> This writer has not been able to determine when the highway reached the town of Greer, or when the ferry ceased operations. It is reasonable to assume that the ferry existed until modern county roads made it obsolete, probably in the late 1920's or 30's.

## COORDINATES FOR LEWISTON TO KAMIAH & PIERCE WAGON ROAD

### T36N,R5W

Section 32: Beginning at the Clearwater Memorial Bridge, Elevation 737 feet.

NAD 27: 46° 25' 01.95"N	116° 59' 57.66 "W
NAD 83: 46° 25' 01.53381"N	117° 00' 01.22246"W
UTM Zone 11: Easting 499973.9	Northing 5140391

North Between Sections 32 & 33 @ 139 ft. Road From Lewiston to Kamiah & Pierce Road .

NAD 27: 46° 24' 48.72:N	116° 58' 47.80"W
NAD 83: 46° 24' 47.07385"N	116° 58' 51.36029"W
UTM Zone 11: Easting 501465.2	Northing 5139944.9

East Between Sections 32 & 4 @ 299 ft. Road From Lewiston to Kamiah & Pierce Road.

NAD 27: 46° 24' 47.49"N	116° 58' 43.34"W
NAD 83: 46° 24' 47.07390"N	116° 58' 46.90018"W
UTM Zone 11: Easting 501560.6	Northing 5138503.3

### T35N,R5W

South Between Sections 3 & 4 @ 2145 ft. Lewiston to Kamiah & Pierce Road.

NAD 27: 46 * 24' 26.51"N	116° 57' 32.13"W
NAD 83: 46° 24' 26.09445"N	116°57' 35.68780"W
UTN Zone 11: Easting 504697.7	Northing 5138343.3

West Between Sections 2 & 11 @ 4323 ft. Lewiston to Kamiah & Pierce Road.

NAD 27: 46° 23' 55.55"N	116° 56' 02.36"W
NAD 83: 46° 23' 55.13502"N	116° 56' 05.91471"W
UTM Zone 11: Easting 504998.7	Northing 5138343.7

North Between Sections 11 & 12 @ 1848 ft. Lewiston to Kamiah & Pierce Road.

NAD 27: 46° 23' 21.76"N	116° 55' 00.99"W
NAD 83: 46° 23' 21.34514"N	116°55' 04.54227"W
UTM Zone 11: Easting 506310.3	Northing 5137302

---

<sup>32</sup> Web searches provide some information on the highway's construction dates, but no information on life of Greer ferry.

T35N,R4W

East Between Sections 7 & 18 @ 2376 ft. Lewiston to Kamiah & Pierce Road.

NAD 27: 46° 23' 02.85"N      116° 53' 10.89"W  
NAD 83: 46° 23' 02.43613"N      116° 53' 14.43906"W  
UTM Zone 11: Easting 508662.7      Northing 5136721.2

North Between Sections 17 & 18 @ 4108 ft. Lewiston to Kamiah & Pierce Road.

NAD 27: 46° 22' 51.10"N      116° 52' 29.12"W  
NAD 83: 46° 22' 50.68651"N      116° 52' 33.66750"W  
UTM Zone 11: Easting 509747.7      Northing 5136360.2

North Between Sections 16 & 17 @ 3135 ft. Lewiston to Kamiah & Pierce Road.

NAD 27: 46° 22' 41.21"N      116° 51' 13.79"W  
NAD 83: 46° 22' 40.79712"N      116° 51' 17.33563"W  
UTM Zone 11: Easting 511165.2      Northing 5136057.4

North Between Sections 15 & 16 @ 1815 ft. Lewiston to Kamiah & Pierce Road.

NAD 27: 46° 22' 28.97"N      116° 49' 57.88"W  
NAD 83: 46° 22' 28.55478"N      116° 50' 01.42347"W  
UTM Zone 11: Easting 512787.6      Northing 5135682.9

North Between Sections 14 & 15 @ 1303 ft. Lewiston to Kamiah & Pierce Road.

NAD 27: 46° 22' 24.63"N      116° 48' 42.68"W  
NAD 83: 46° 22' 24.21859"N      116° 48' 46.22153"W  
UTM Zone 11: Easting 514394.5      Northing 5135552.5

Junction of the Lewiston to Grangeville Road & the Road to Kamiah & Pierce.

NAD 27: 46° 22' 09.03"N      116° 47' 48.38"W  
NAD 83: 46° 22' 08.61889"N      116° 47' 51.91983"W  
UTM Zone 11: Easting 515555.8      Northing 5135073.9

T35N,R3W

South between Sections 19 & 24 @ 5105 ft. Lewiston to Kamiah & Pierce Road.

NAD 27: 46° 24' 22.12"N      116° 46' 11.02"W  
NAD 83: 46° 24' 21.70897"N      116° 46' 14.55634"W  
UTM Zone 11: Easting 517640.2      Northing 5133631.7

North Between Sections 19 & 20 @ 4290 ft. Lewiston to Kamiah & Pierce Road.

NAD 27: 46° 22' 00.14"N      116° 44' 45.16"W  
NAD 83: 46° 21' 59.73100"N      116° 44' 48.69537"W  
UTM Zone 11: Easting 519471.4      Northing 5134810.8

West Between Sections 17 & 20 @ 1716 ft. Lewiston to Kamiah & Pierce Road.

NAD 27: 46° 22' 10.40"N	116° 43' 52.85"W
NAD 83: 46° 22' 9.99234"N	116° 43' 56.38495"W
UTM Zone 11: Easting 520588	Northing 5135131.2

From Section 17 to the East Boundary of the Township the Road is projected due to the lack of calls by the surveyor. On the West boundary of Township 35 North, Range 2 West:

South Between Sections 13 & 18 @ 800 ft. Lewiston to Kamiah & Pierce.

NAD 27: 46° 22' 55.40"N	116° 38' 23.17"W
NAD 83: 46° 22' 55.00065"N	116° 38' 26.70154"W
UTM Zone 11: Easting 527625.5	Northing 5136548.3

North Between Sections 17 & 18 @ 3432 ft. Lewiston to Kamiah & Pierce Road.

NAD 27: 46° 22' 44.24"N	116° 37' 07.17"W
NAD 83: 46° 22' 43.84914"N	116° 37' 10.70035"W
UTM Zone 11: Easting 529250.6	Northing 5136211.5

South Between Sections 16 & 17 @ 970 ft. Lewiston to Kamiah & Pierce Road.

NAD 27: 46° 22' 19.83"N	116° 35' 50.99"W
NAD 83: 46° 22' 19.43276"N	116° 35' 54.51900"W
UTM Zone 11: Easting 530881.1	Northing 5135466.1

West Between Sections 16 & 21 @ 2241 ft. Lewiston to Kamiah & Pierce Road.

NAD 27: 46° 22' 10.41"N	116° 35' 06.95"W
NAD 83: 46° 22' 10.01336"N	116° 35' 10.47831"W
UTM Zone 11: Easting 531824.2	Northing 5135180.9



Fort Lapwai In 1940

Courtesy of University Of Idaho Library Special Collections & Archives PG-5-013-4a  
14.



North Between Sections 21 & 22 @ 1881 ft. Lewiston to Kamiah & Pierce Road.

NAD 27: 46° 21' 36.33"N      116° 34' 34.85"W  
NAD 83: 46° 21' 35.93282"N      116° 34' 38.37748"W  
UTM Zone 11: Easting 532515.6      Northing 5135180.2

North Between Sections 26 & 27 @ 4765 ft. Lewiston to Kamiah & Pierce Road.

NAD 27: 46° 21' 12.14"N      116° 33' 19.40"W  
NAD 83: 46° 21' 11.74345"N      116° 33' 22.92631"W  
UTM Zone 11: Easting 534132.1      Northing 5133395.2

West Between Sections 26 & 35 @ 3564 ft. Lewiston to Kamiah & Pierce Road.

NAD 27: 46° 20' 25.13"N      116° 32' 55.16"W  
NAD 83: 46° 20' 24.73217"N      116° 32' 58.68552"W  
UTM Zone 11: Easting 534658.5      Northing 5131946.1

West Between Sections 2 & 35 @ 1815 Lewiston to Kamiah & Pierce Road.

NAD 27: 46° 19' 32.66"N      116° 32' 30.19"W  
NAD 83: 46° 19' 32.26064"N      116° 32' 33.71471"W  
UTM Zone 11: Easting 535201.6      Northing 5130329.6

T34N,R2W

North between Sections 13 & 14 @ 1749 ft. Lewiston to Kamiah & Pierce Road.

NAD 27: 46° 17' 12.13"N      116° 32' 04.36"W  
NAD 83: 46° 17' 11.72569"N      116° 32' 07.88308"W

&

@ 2854 ft. Lewiston to Kamiah & Pierce Road

NAD 27: 46° 17' 23.04"N      116° 32' 03.82"W  
NAD 83: 46° 17' 22.63612"N      116° 32' 07.34316"W  
UTM Zone 11: Easting 5357889      Northing 5126332.1

West Between Sections 13 & 24 @ 5131 ft. Lewiston to Kamiah & Pierce Road

NAD 27: 46° 16' 54.52"N      116° 32' 00.25"W  
NAD 83: 46° 16' 54.11505"N      116° 32' 05.74289"W  
UTM Zone 11L Easting 535828.4      Northing 5125452

West Between Sections 13 & 14 @ 5016 ft. Lewiston to Kamiah & Pierce Road.

NAD 27: 46° 16' 02.08"N      116° 32' 00.25"W  
NAD 83: 46° 16' 01.67305"N      116° 32' 03.77237"W  
UTM Zone 11: Easting 535880      Northing 5123833.7

T34N,R1W

On the West Boundary of Township

North Between Sections 25 & 30 @ 3333 ft. Lewiston to Kamiah & Pierce Road

NAD 27: 46° 15' 43.02"N      116° 30' 48.93"W  
NAD 83: 46° 15' 42.61328"N      116° 30' 52.45178"W  
UTM Zone 11: Easting 537410.3      Northing 5123254.5

North Between Sections 29 & 30 @ 1469 Lewiston to Kamiah & Pierce Road

NAD 27: 46° 15' 25.18"N      116° 29' 36.07"W  
NAD 83: 46° 15' 24.77370"N      116° 29' 39.59106"W  
UTM Zone 11: Easting 538973.5      Northing 5122713.7

North Between Sections 27 & 28 @ 4448 ft. Lewiston to Kamiah & Pierce Road

NAD 27: 46° 15' 54.26"N      116° 27' 05.72"W  
NAD 83: 46° 15' 53.85802"N      116° 27' 09.23925"W  
UTM Zone 11: Easting 542186.2      Northing 5123632.7

West Between Sections 23 & 26 @ 4224 ft. Lewiston to Kamiah & Pierce Road.

NAD 27: 46° 16' 02.79"N      116° 25' 35.74"W  
NAD 83: 46° 16' 02.39026"N      116° 25' 39.25807"W  
UTM Zone 11: Easting 544110.5      Northing 5123909.7

North Between Sections 26 & 27 @ 4554 ft. Lewiston to Kamiah & Pierce Road.

NAD 27: 46° 15' 55.13"N      116° 25' 50.56"W  
NAD 83: 46° 15' 54.72962"N      116° 25' 54.07825"W  
UTM Zone 11: Easting 543794.9      Northing 5123671

T34N,R1E

North between Sections 17 & 18 @ 4158 ft. Lewiston to Kamiah & Pierce Road.

NAD 27: 46° 17' 37.12"N      116° 22' 04.74"W  
NAD 83: 46° 17' 36.72885"N      116° 22' )\*.24503"W  
UTM Zone 11: Easting 548604      Northing 5126855.7

North Between Sections 16 & 17 @ 3036 ft. Lewiston to Kamiah & Pierce Road.

NAD 27: 46° 17' 25.75"N      116° 20' 49.41"W  
NAD 83: 46° 17' 25.35996"N      116° 20' 52.92391"W  
UTM Zone 11: Easting 550218.4      Northing 5126517.8

West Between Sections 16 & 21 @ 1683 ft. Lewiston to Kamiah & Pierce Road.

NAD 27: 46° 16' 56.00"N      116° 19' 57.82"W  
NAD 83L 46° 16' 55.60972"N      116° 20' 01.33325"W  
UTM Zone 11: Easting 551330      Northing 5125608.8

North Between Sections 21 & 22 @ 4092 ft. Lewiston to Kamiah & Pierce Road.

NAD 27: 46° 16' 43.29"N      116° 19' 33.62"W  
NAD 83: 46° 16' 42.89966"N      116° 19' 37.13295"W  
UTM Zone 11: Easting 551851.2      Northing 5125220.8

North Between Sections 22 & 23 @ 2785 ft. Lewiston to Kamiah & Pierce Road.

NAD 27: 46° 16' 30.46"N      116° 18' 18.74"W  
NAD 83: 46° 16' 30.07065"N      116° 18' 22.25196"W  
UTM Zone 11: Easting 553457.2      Northing 5124838.7

North Between Sections 23 & 24 @ 4352 ft. Lewiston to Kamiah & Pierce Road.

NAD 27: 46° 16' 45.88"N      116° 17' 02.95"W  
NAD 83: 46° 16' 45.49297"N      116° 17' 06.46077"W  
UTM Zone 11: Easting 555075      Northing 5125329.1

On the East Boundary Between 19 & 24 @ 4455 ft. Lewiston to Kamiah & Pierce Road

NAD 27: 46° 16' 46.76"N      116° 15' 47.13"W  
NAD 83: 46° 16' 46.37461"N      116° 15' 50.63967"W  
UTM Zone 11: Easting 556697.3      Northing 5125371.2

On West Boundary, North Between Sections 13 & 18 @ 2541 ft. Junction of Pierce Road.

NAD 27: 46° 17' 20.81"N      116° 23' 19.75"W  
NAD 83: 46° 17' 20.41652"N      116° 23' 23.26620"W  
UTM Zone 11: Easting 547002.9      Northing 5126339.6

Coordinates For Lewiston To Kamiah Wagon Road  
T34N,R2E

West Between Sections 22 & 27 @ 3201 ft. Lewiston to Kamiah Wagon Road.

NAD 27: 46° 16' 02.53"N      116° 11' 32.90"W  
NAD 83: 46° 16' 02.14818"N      116° 11' 36.40802"W  
UTM Zone 11: Easting 562151.8      Northing 5124059.1

North Between Sections 21 & 22 @ 924 ft. Lewiston to Kamiah Wagon Road.

NAD 27: 46° 16' 11.92"N      116° 12' 02.47"W  
NAD 83: 46° 16' 11.53795"N      116° 12' 05.97813"W  
UTM Zone 11: Easting 561516      Northing 5124342.5

North Between Sections 20 & 21 @ 2178 ft. Lewiston to Kamiah Wagon Road

NAD 27: 46° 16' 24.41"N      116° 13' 17.45"W  
NAD 83: 46° 16' 24.02684"N 116° 13' 20.95852"W  
UT Zone 11: Easting 559907.3      Northing 5124712

&

Junction of Lapwai to Kamiah Indian Trail And Kamiah to North Fork Clearwater Trail.

NAD 27: 46° 16' 18.35"N      116° 12' 43.45"W  
NAD 83: 46° 16' 17.96732"N      116° 12' 46.95834"W  
TM Zone 11: Easting 560636.8      Northing 5124532.2

North Between Sections 19 & 20 @ 2112 ft. Lewiston to Kamiah Wagon Road.

NAD 27: 46° 16' 23.79"N      116° 14' 32.75"W  
NAD 83: 46° 16' 23.40513"N      116° 14' 36.25903  
UTM Zone 11: Easting 558295.8      Northing 5124677.2



Nezperce, Idaho-1904

Courtesy of the University of Idaho Library Special Collections & Archives PG-5-101-1a.

T34N,R3E

North Between Sections 33 & 34 @ 264 ft. Lewiston to Kamiah Wagon Road.

NAD 27: 46° 14' 20.75"N	116° 04' 30.79"W
NAD 83: 46° 14' 20.37345"N	116° 04' 34.29623"W
UTM Zone 11: Easting 571223.8	Northing 5121016.5

North Between Sections 32 & 33 @ 2821 ft. Lewiston to Kamiah Wagon Road.

NAD 27: 46° 14' 46.10"N	116° 05' 45.87"W
NAD 83: 46° 14' 45.72276"N	116° 05' 49.37640"W
UTM Zone 11: Easting 569606.9	Northing 5121780.4

North Between Sections 31 & 32 @ 3100 ft. Lewiston to Kamiah Wagon Road.

NAD 27: 46° 14' 59.83"N	116° 07' 00.80"W
NAD 83: 46° 14' 59.45161"N	116° 07' 04.30672"W
UTM Zone 11: Easting 567997.7	Northing 5122186

T33N,R3E

The Lewiston to Kamiah Wagon Road was projected into Kamiah. Early Surveys didn't record.

East Between Sections 34 & 3 @ 66ft. Lewiston to Kamiah Wagon Road.

NAD 27: 46° 14' 18.02"N	116° 04' 27.30"W
NAD 83: 46° 14' 17.64341"N	116° 04' 30.80624"W
UTM Zone 11: Easting 571299.6	Northing 5120933.1

South Between Sections 2 & 3 @ 3700 ft. Lewiston to Kamiah Wagon Road.  
NAD 27: 46° 13' 41.85"N      116° 03' 16.35"W  
NAD 83: 46° 13' 41.47357"N      116° 03' 19.85624"W  
UTM Zone 11: Easting 572832.3      Northing 5119834.6

North Between Sections 1 & 2 @ 1800 ft. Lewiston to Kamiah Wagon Road.  
NAD 27: 46° 13' 43.64"N      116° 02' 19.57"W  
NAD 83: 46° 13' 43.26498"N      116° 02' 23.07580"W  
UTM Zone 11: Easting 574047.8      Northing 5119904.5

Coordinates For The Lewiston To Pierce City Wagon Road

T34N,R2E

East Between Sections 18 & 19 @ 620 ft. Lewiston to Pierce City Wagon Road.  
NAD 27: 46° 16' 54.92"N      116° 15' 38.27"W  
NAD 83: 46° 16' 54.53519"N      116° 15' 41.77946"W  
UTM Zone 11: Easting 556884.6      Northing 5125624.8

East Between Sections 7 & 18 @ 2607 ft. Lewiston to Pierce City Wagon Road.  
NAD 27: 46° 17' 47.42"N      116° 15' 09.78"W  
NAD 83: 46° 17' 47.03828"N      116° 15' 13.28852"W  
UTM Zone 11: Easting 557470      Northing 5127251

North Between Sections 7 & 8 @ 5115 ft. Lewiston to Pierce City Wagon Road.  
NAD 27: 46° 18' 37.81"N      116° 14' 32.02"W  
NAD 83: 46° 18' 37.43148"N      116° 14' 35.52768"W  
UTM Zone 11: Easting 558272      Northing 5128814

West Between Sections 5 & 8 @ 5198 ft. Lewiston to Pierce City Wagon Road.  
NAD 27: 46° 18' 39.91"N      116° 14' 31.30"W  
NAD 83: 46° 18' 39.53160"N      116° 14' 34.80765"W  
UTM Zone 11: Easting 558286.8      Northing 5128879

South Between Sections 5 & 6 @ 3630 ft. Lewiston to Pierce City Wagon Road.  
NAD 27: 46° 19' 15.86"N      116° 14' 30.38"W  
NAD 83: 46° 19' 15.48332"N      116° 14' 33.88728"W  
UTM Zone 11: Easting 558295.8      Northing 5129988.8

T35N,R2E

North Between Sections 31 & 32 @ 66 ft. Lewiston to Pierce City Wagon Road.

NAD 27: 46° 19' 33.36"N      116° 14' 31.90"W  
NAD 83: 46° 19' 32.98411"N      116° 14' 35.40712"W  
UTM Zone 11: Easting 558258.2      Northing 5130528.7

&

@ 2904 ft. Lewiston to Pierce City Wagon Road.

NAD 27: 46° 20' 02.13"N      116° 14' 31.90"W  
NAD 83: 46° 20' 01.75547"N      116° 14' 35.40683"W  
UTM Zone 11: Easting 558249.7      Northing 5131416.7

East Between Sections 30 & 31 @ 5115 ft. Lewiston to Pierce City Wagon Road.

NAD 27: 46° 20' 24.98"N      116° 14' 34.04"W  
NAD 83: 46° 20' 24.60651"N      116° 14' 37.54661"W  
UTM Zone 11: Easting 558197.2      Northing 5132121.5

North Between Sections 29 & 30 @ 495 ft. Lewiston to Pierce City Wagon Road.

NAD 27: 46° 20' 30.05"N      116° 14' 31.54"W  
NAD 83: 46° 20' 29.67680"N      116° 14' 35.04654"W  
UTM Zone 11: Easting 558249.2      Northing 5132278.5

West Between Sections 20 & 29 @ 1749 ft. Lewiston to Pierce City Wagon Road.

NAD 27: 46° 21' 17.48"N      116° 13' 40.91"W  
NAD 83: 46° 21' 17.11605"N      116° 13' 44.41576  
UTM Zone 11: Easting 559517.4      Northing 5133755.1

West Between Sections 17 & 20 @ 2772 Lewiston to Pierce City Wagon Road.

NAD 27: 46° 22' 09.78"N      116° 13' 55.53"W  
NAD 83: 46° 22' 09.41221"N      116° 13' 59.03533"W  
UTM Zone 11: Easting 558989.1      Northing 5135364.3

North Between Sections 16 & 17 @ 1716 ft. Lewiston to Pierce City Wagon Road.

NAD 27: 46° 22' 26.37"N      116° 13' 16.11"W  
NAD 83: 46° 22' 26.00375"N      116° 13' 19.61493"W  
UTM Zone 11: Easting 559826.3      Northing 5135884.6

West Between Section 9 & 16 @ 1947 ft. Lewiston to Pierce City Wagon Road.

NAD 27: 46° 23' 01.41"N      116° 12' 28.82"W  
NAD 83: 46° 23' 01.04628"N      116° 12' 32.32430"W  
UTM Zone 11: Easting 560825.8      Northing 5136976.2

North Between Sections 9 & 10 @ 2244 ft. Lewiston to Pierce City Wagon Road.

NAD 27: 46° 23' 23.94"N      116° 12' 01.17"W  
NAD 83: 46° 23' 23.57784"N      116° 12' 04.67392"W  
UTM Zone 11: Easting 561409.4      Northing 5137677.5



North Between Sections 10 & 11 @ 1452 ft. Lewiston to Pierce City Wagon Road.

NAD 27: 46° 23' 16.02"N      116° 10' 46.05"W  
NAD 83: 46° 23' 15.65889"N      116° 10' 49.55356"W  
UTM Zone 11: Easting 563016.3      Northing 5137449.5

North Between Section 14 & 15 @ 4778 ft. Lewiston to Pierce City Wagon Road.

NAD 27: 46° 22' 56.45"N      116° 10' 46.57"W  
NAD 83L 46° 22' 56.08799"N      116° 10' 50.07375"W  
UTM Zone 11: Easting 563011.5      Northing 5136845.4

&

@ 4811 ft. SAME ROAD

NAD 27: 46° 22' 56.82"N      116° 10' 46.93"W  
NAD 83 46° 22' 56.45800"N 116° 10' 50.43375"W  
UTM Zone 11: Easting 563003.6      Northing 5136856.7

&

@ 4870 ft. SAME ROAD

NAD 27: 46° 22' 57.44"N      116° 10' 46.75"W  
NAD 83 46° 22' 57.07803"N 116° 10' 50.25375"W  
U Zone 11: Easting 563007.3      Northing 5136875.9

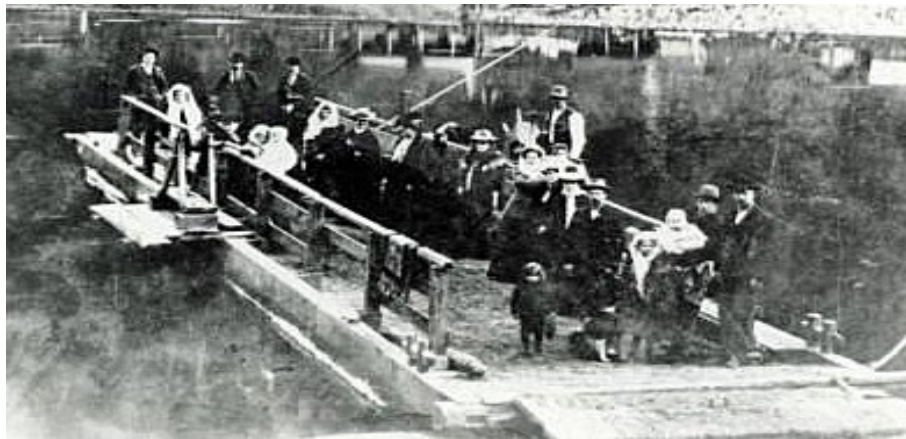
West Landing of Craig's Ferry (Approximation From Plat.)

NAD 27: 46° 23' 03.37"N      116° 10' 30.73"W  
NAD 83: 46° 23' 02.90860"N      116° 10' 34.23360"W  
UTM Zone 11: Easting 563347.6      Northing 5137059.4

East Landing of Craig Ferry (Approximation From Plat.)

NAD 27: 46° 23' 07.60"N      116° 10' 34.48"W  
NAD 83: 46° 23' 07.23873"N      116° 10' 37.98358"W  
UTM Zone 11: Easting 563266.1      Northing 5137192.2

The Greer Ferry -1901



Greer Ferry

Courtesy of the University of Idaho Library Special Collections & Archives, PG-5-091-3

North Between Sections 13 & 14 @ 3960 ft. Lewiston to Pierce City Wagon Road.

NAD 27: 46° 22' 48.03"N	116° 09' 30.74"W
NAD 83: 46° 22' 47.66906"N	116° 09' 34.24339"W
UTM Zone 11: Easting 564634	Northing 5136602.5

West Between Sections 11 & 14 @ 726 ft. Lewiston to Pierce City Wagon Road.

NAD 27: 46° 23' 01.77"N	116° 09' 41.45"W
NAD 83: 46° 23' 01.40947"N	116° 09' 44.95332"W
UTM Zone 11: Easting 564400.7	Northing 5137024.2

&

@ 792 ft. SAME ROAD

NAD 27: 46° 23' 01.77"N	116° 09' 42.34"W
NAD 83: 46° 23' 01.40947"N	116° 09' 45.84333"W
UTM Zone 11: Easting 564381.7	Northing 5137024

&

@ 4076 ft. SAME ROAD TO PIERCE CITY.

NAD 27 46° 23' 01.77"N	116 10' 29.45"W
NAD 83: 46° 23' 01.40969"N	116° 10' 32.95325"W
UTM Zone 11: Easting 563375.4	Northing 5137013.4

T35N,R3E

South Between Sections 16 & 17 @ 1848 ft. Pierce City Wagon Road

NAD 27: 46° 22' 42.67"N	116° 05' 42.59"W
NAD 83: 46° 22' 42.31317"N	116° 05' 46.09210"W
UTM Zone 11: Easting 569509.4	Northing 5136490.9

South Between Sections 17 & 18 @! 1551 ft. Pierce City Wagon Road.

NAD 27: 46° 22' 45.27"N	116° 07' 16.98"W
NAD 83: 46° 22' 44.91148"N	116° 07' 20.48263"W
UTM Zone 11: Easting 567492.2	Northing 5136548.4

North Between Section 13 & 14 @ 4208 ft. Pierce City Wagon Road.

NAD 27: 46° 22' 49.73"N	116° 02' 15.10"W
NAD 83: 46° 22' 49.37742"N	116° 02' 18.60083"W
UTM Zone 11: Easting 573939.2	Northing 5136761.2

East Between Sections 11 & 14 @ 2013 ft. Pierce City Wagon Road

NAD 27: 46° 23' 00.02"N	116° 03' 01.31"W
NAD 83: 46° 22' 59.66697"N	116° 03' 04.81100"W
UTM Zone 11: Easting 572948.3	Northing 5137066.8"W

North Between Section 10 & 11 @ 1238 ft. Pierce City Wagon Road.

NAD 27: 46° 23' 12.66"N	116° 03' 30.22"W
NAS 83: 46° 23' 12.30695"N	116° 03' 33.72106"W
UTM Zone 11: Easting 572326.1	Northing 5137449.6

North Between Sections 15 & 16 @ 3524 ft. Pierce City Wagon Road.

NAD 27: 46° 22' 43.16"N      116° 03' 30.04"W  
NAD 83: 46° 22' 42.80572"N      116° 03' 33.54131"W  
UTM Zone 11: Easting 573340.8      Northing 5136539.1

East Between Sections 10 & 15 @ 1676 ft. Pierce City Wagon Road.

NAD 27: 46° 23' 00.76"N      116° 04' 22.32"W  
NAD 83: 46° 23' 00.40547"N      116° 04' 25.82147"W  
UTM Zone 11: Easting 571217.6      Northing 5137069.1

T35N,R4E

North Between Sections 2 & 3 @ 1056 ft. Pierce City Wagon Road.

NAD 27: 46° 24' 03.30"N      115° 55' 53.37"W  
NAD 83: 46° 24' 02.95737"N      115° 55' 56.87037"W  
UTM Zone 11: Easting 582062.6      Northing 5139136.7

East Between Sections 15 & 22 @ 2706 ft. Pierce City Wagon Road.

NAD 27: 46° 22' 07.29"N      115° 56' 32.07"  
NAD 83: 46° 22' 06.94251"N      115° 56' 35.57071"W  
UTM Zone 11: Easting 581284.1      Northing 5135544.9

East Between Sections 10 & 15 @ 3201 ft. Pierce City Wagon Road.

NAD 27: 46° 22' 59.28"N      115° 56' 25.65"W  
NAD 83: 46° 22' 58.93450"N      115° 56' 29.15051"W  
UTM Zone 11: Easting 581399.8      Northing 5137151.4

East Between Sections 3 & 10 @ 4554 ft. Pierce City Wagon Road.

NAD 27: 46° 23' 52.70"N      115° 56' 02.64"W  
NAD 83: 46° 23' 52.35682"N      115° 56' 06.14037"W  
UTM Zone 11: Easting 581869.1      Northing 5138806.9

North Between Sections 20 & 21 @ 3734 ft. Pierce City Wagon Road.

NAD 27: 46° 21' 51.23"N      115° 58' 27.60"W  
NAD 83: 46° 21' 50.87957"N      115° 58' 31.10062"W  
UTM Zone 11: Easting 578822.2      Northing 5135016.6

North Between Sections 19 & 20 @ 4297 ft. Pierce City Wagon Road.

NAD 27: 46° 21' 58.04"N      115° 59' 43.17"W  
NAD 83: 46° 21' 57.68829"N      115° 59' 46.67046"W  
UTM Zone 11: Easting 577204.8      Northing 5135206.

West Between Sections 18 & 19 @ 2524 ft. Pierce City Wagon Road.

NAD 27: 46° 22' 08.07"N      115° 00' 22.85"W  
NAD 83: 46° 22' 07.71790"N      115° 00' 26.35049"W  
UTM Zone 11: Easting 576353.1      Northing 5135505

T36N,R4E

On East Boundary-North Between Sections 31 & 36 @ 4900 ft. Pierce City Wagon Road.

NAD 27: 46° 25' 32.01"N      115° 53' 21.34"  
NAD 83: 46° 25' 31.67298"N      115° 53' 24.84088"W  
UTM Zone 11: Easting 585270.5      Northing 514\*1914.6

T36N,R5E

North Between Sections 2 & 3 @ 2392 ft. Pierce City Wagon Road.

NAD 27: 46° 29' 26.57"N      115° 48' 20.62"W  
NAD 83: 46° 29' 26.24419"N      115° 48' 24.13262"W  
UYM Zone 11: Easting 591570.5      Northing 5149253.2

North Between Sections 15 & 16 @ 5181 ft. Pierce City Wagon Road.

NAD 27: 46° 28' 10.54"N      115° 49' 35.84"W  
NAD 83L: 46° 28' 10.21114"N      115° 49' 39.34264"W  
UTM Zone 11: Easting 590010.8      Northing 5146882.4

East Between Sections 10 & 15 @ 198 ft. Pierce City Wagon Road.

NAD 27: 46° 28' 11.16"N      115° 49' 33.17"W  
NAD 83: 46° 28' 10.83119"N      115° 49' 36.67266"W  
UTM Zone 11: Easting 590067.5      Northing 5146902.4

East Between Sections 3 & 10 @ 4587 ft. Pierce City Wagon Road.

NAD 27: 46° 29' 02.67"N      115° 48' 29.33"W  
NAD 83: 46° 29' 02.34344"N      115° 48' 32.83343"W  
UTM Zone 11: Easting 591404.9      Northing 5148512.7

North Between Sections 16 & 17 @ 660 ft. Pierce City Wagon Road.

NAD 27: 46° 27' 26.95"N      115° 50' 51.63"W  
NAD 83: 46° 27' 26.61886"N      115° 50' 55.13192"W  
UTM Zone 11: Easting 588414.1      Northing 5145513.1

West Between Sections 30 & 31 @ 4851 ft. Pierce City Wagon Road.

NAD 27: 46° 25' 36.72"N      115° 53' 16.70"W  
NAD 83: 46° 25' 36.38321"N      115° 53' 20.20090"W  
UTM Zone 11: Easting 585367.5      Northing 5142066.4

North Between Sections 29 & 30 @ 4966 ft. Pierce City Wagon Road.

NAD 27: 46° 26' 25.08"N      115° 52' 06.79"W  
NAD 83: 46° 26' 24.74584"N      115° 52' 10.29132"W  
UTM Zone 11: Easting 586838.2      Northing 5143580.3

East Between Sections 20 & 29 @ 99ft. Pierce Wagon Road.

NAD 27: 46° 26' 28.30"N      115° 52' 05.54"W  
NAD 83: 46° 26' 27.96596"N      115° 52' 09.04133"W  
UTM Zone 11: Easting 586863.5      Northing 5143680

East Between Sections 17 & 20 @ 4950 ft. Pierce City Wagon Road.

NAD 27: 46° 27' 20.25"N      115° 50' 56.31"W  
NAD 83: 46° 27' 19.91684"N      115° 50' 59.81099"W  
UTM Zone 11: Easting 588317.3      Northing 5145304.8



Pierce City In 1897 (*Note flag pole on Island in middle of street.*)

Courtesy: University Of Idaho Library, Special Collections & Archives PG5-085-3a.

## COORDINATES FOR THE OLD INDIAN TRAIL FROM LAPWAI TO KAMIAH

T36N,R4W

The location of the trail in this township was taken from the survey plat and is a projection.

West on South Boundary of Section 35 @ 2900 ft. Begin Lapwai to Kamiah Trail.

NAD 27: 46° 24' 48.10"N      116° 48' 07.68"W  
NAS 83: 46° 24' 47.69220"N      116° 48' 11.22426"W  
UTM Zone 11: Easting 515131.1      Northing 5139982.7

North Between Sections 35 & 36 @ 1652 ft. Indian Trail to Kamiah.

NAD 27: 46° 25' 04.52"N      116° 47' 26.58"W  
NAD 27: 46° 25' 04.11311"N      116° 47' 30.12364"W  
UTM Zone 11: Easting 516007.2      Northing 5140491.7

West Between Sections 36 & 25 @ 1000 ft. Indian Trail to Kamiah.

NAD 27: 46° 25' 40.09"N      116° 46' 24.72"W  
NAD 83: 46° 25' 39.68474"N      116° 46' 28.26295"W  
UTM Zone 11: Easting 517324.6      Northing 5141593.3

North On The East Boundary Of Section 25 @ 1076 ft. Indian Trail to Kamiah.

NAD 27: 46° 25' 50.84"N      116° 46' 10.43"W  
NAD 83: 46° 25' 50.43518"N      116° 46' 13.97285"W  
UTM Zone 11: Easting 517628.6      Northing 5141926

T36N,R3W

West Between Sections 30 & 19 @ 1275 ft Lapwai-Kamiah Trail Projected From Plat.

NAD 27: 46° 26' 32.53"N      116° 45' 03.76"W  
NAD 83: 46° 26' 32.12706"N      116° 45' 07.30215"W  
UTM Zone 11: Easting 519047.5      Northing 5143217.1

North Between Sections 20 & 21 @ 297 ft. Lapwai-Kamiah Trail.

NAD 27: 46° 26' 35.74"N      116° 43' 28.65"W  
NAD 83: 46° 26' 35.33957"N      116° 43' 32.19054"W  
UTM Zone 11: Easting 521076.5      Northing 5143323

North Between Sections 21 & 22 @ 1934 ft. Lapwai- Kamiah Trail.

NAD 27: 46° 26' 51.84"N      116° 42' 12.17"W  
NAD 83: 46° 26' 51.44199"N      116° 42' 15.70954"W  
UTM Zone 11: Easting 522706.5      Northing 5143825.9

North Between Sections 22 & 23 @ 1617 ft. Lapwai-Kamiah Trail.

NAD 27: 46° 26' 49.11"N      116° 40' 55.34"W  
NAD 83: 46° 26' 48.71394"N      116° 40' 58.87813"W  
UTM Zone 11: Easting 524346      Northing 5143748

West Between Sections 23 & 26 @ 4158 ft. Lapwai-Kamiah Trail.

NAD 27: 46° 26' 33.12"N      116° 40' 38.36"W  
NAD 83: 46° 26' 32.72393"N      116° 40' 41.89752"W  
UTM Zone 11: Easting 524710.3      Northing 5143255.9

West Between Sections 26 & 35 @ 1650 ft. Lapwai-Kamiah Trail.

NAD 27: 46° 25' 40.20"N      116° 40' 03.00"W  
NAS 83: 46° 25' 39.80330"N      116° 40' 06.53593"W  
UTM Zone 11: Easting 525471.7      Northing 5141625.6

On East Boundary: North Between Sections 31 & 36 @ 2112 ft Lapwai-Kamiah Trail.

NAD 27: 46° 25' 09.09"N      116° 38' 22.81"W  
NAD 83: 46° 25' 08.69483"N      116° 38' 26.34376"W  
UTM Zone 11: Easting 527614.4      Northing 5140674.8



T36N,R2W

North Between Sections 31 & 32 @ 2508 ft. Lapwai-Kamiah Trail.

NAD 27: 46° 25' 13.05"N      116° 37' 06.95"W  
NAD 83: 46° 25' 12.65681"N      116° 37' 10.48262"W  
UTM Zone 11: Easting 529233.1      Northing 5140804.7

North Between Sections 32 & 33 @ 1914 ft. Lapwai-Kamiah Trail.

NAD 27: 46° 25' 07.23"N      116° 35' 51.08"W  
NAD 83: 46° 25' 06.83847"N      116° 35' 54.61133"W  
UTM Zone 11: Easting 530853.6      Northing 5140633.1

North Between Sections 33 & 34 @ 2112 ft. Lapwai-Kamiah Trail.

NAD 27: 46° 25' 09.21"N      116° 34' 35.63"W  
NAD 83: 46° 25' 08.82038"N      116° 34' 39.16017"W  
UTM Zone 11: Easting 532464.2      Northing 5140641.5

North Between Sections 34 & 35 @ 3432 ft. Lapwai-Kamiah Trail.

NAD 27: 46° 25' 21.96"N      116° 25' 48.96"W  
NAD 83: 46° 25' 21.58389"N      116° 25' 52.47972"W  
UTM Zone 11: Easting 543703.5      Northing 5141167

North Between 35 & 36 @ 198ft. Lapwai-Kamiah Trail.

NAD 27: 46° 24' 49.89"N      116° 32' 03.30"W  
NAD 83: 46° 24' 49.50335"N      116° 32' 06.82756"W  
UTM Zone 11: Easting 535719      Northing 5140124.7

West Between Sections 36 & 1 @ 3036 ft. Lapwai-Kamiah Trail.

NAD 27: 46° 24' 47.78"N      116° 31' 40.38"W  
NAD 83: 46° 24' 47.39382"N      116° 31' 43.90719  
UTM Zone 11: Easting 536208.7      Northing 5140062.5

T35N,R1W

On West Boundary: North Between Sections 1 & 6 @ 3580 ft. Lapwai-Kamiah Trail. (1869)

NAD 27: 46° 24' 30.17"N      116° 30' 46.76"W  
NAD 83: 46° 24' 29.78440"N      116° 30' 50.28621"W  
UTM Zone 11: Easting 537356.8      Northing 5139525.9



White Bird and Jimmy Hayes

Post Card Commemorating The Centennial Of Nez Perce War Of 1877.  
 Courtesy Of The University Of Idaho library, Special Collections & Archives PG-100-532.

Lapwai-Kamiah Trail projected for the next four bearings due to surveyor not calling the location.

West Between Sections 6 & 7 @ 800 feet Lapwai-Kamiah Trail.

NAD 27: 46° 23' 55.22"N	116° 29' 44.49"W
NAD 83: 46° 23' 54.83445"N	116° 29' 48.01488"W
UTM Zone 11: Easting 538693.1	Northing 5138455.4

North Between Sections 7 & 8 @ 4000ft. Lapwai-Kamiah Trail.

NAD 27: 46° 23' 42.45"N	116° 29' 33.25"W
NAD 83: 46° 23' 42.06420"N	116° 29' 36.77453"W
UTM Zone 11: Easting 538935.7	Northing 5138062.8

North Between Sections 8 & 9 @ 1200 ft. Lapwai-Kamiah Trail.

NAD 27: 46° 23' 014.44"N	116° 28' 18.15"W
NAD 83: 46° 23' 14.05486"N	116° 28' 21.67268"W
UTM Zone 11: Easting 540545.3	Northing 5137208.8

West Between Sections 9 & 16 @ 1200 ft. Lapwai-Kamiah Trail.

NAD 27: 46° 23' 01.80"N	116° 27' 19.99"W
NAD 83: 46° 23' 01.41572"N	116° 25' 23.51134"W
UTM Zone 11: Easting 541790.2	Northing 5136827.1

North Between Sections 14 & 15 @ 3729 ft. Lapwai-Kamiah Trail.  
NAD 27: 46° 22' 46.06"N      116° 25' 48.30"W  
NAD 83: 46° 22' 45.67724"N      116° 25' 51.81929"W  
UTM Zone 11: Easting 543752.2      Northing 5136355.1

North Between Sections 13 & 14 @ 165 ft. Lapwai-Kamiah Trail.  
NAD 27: 46° 22' 11.00"N      116° 24' 34.46"W  
NAD 83: 46° 22' 36.29776"N      116° 24' 37.97766"W  
UTM Zone 11: Easting      Northing

T35N,R1E

North Between Sections 19 & 24 @ 1980 ft. Lapwai-Kamiah Trail.  
NAD 27: 46° 21' 36.68"N      116° 23' 19.03"W  
NAD 83: 46° 21' 36.29776"N      116° 23' 22.54610"W  
UTM Zone 11: Easting 545337.6      Northing 5135284.5

West Between Sections 34 & 3 @ 3168 ft. Lapwai-Kamiah Trail.  
NAD 27: 46° 19' 32.32"N      116° 19' 03.16"W  
NAD 83: 46° 19' 31.93803"N      116° 19' 06.67161"W  
UTM Zone 11: Easting 552458.2      Northing 5130443.7

North Between Sections 28 & 29 @ 4462 ft. Lapwai-Kamiah Trail.  
NAD 27: 46° 21' 08.36"N      116° 20' 48.05"W  
NAD 83: 46° 21' 31.93803"N      116° 20' 51.56315"W  
UTM Zone 11: Easting 550191      Northing 5133389.1

North Between Sections 19 & 20 @ 900 ft. Lapwai-Kamiah Trail.  
NAD 27: 46° 21' 26.11"N      116° 22' 04.54"W  
NAD 83: 46° 21' 25.72902"N      116° 22' 08.05462"W  
UTM Zone 11: Easting 548551.8      Northing 5133923.7

East Between Sections 20 & 29 @ 990 ft. Lapwai-Kamiah Trail.  
NAD 27: 46° 21' 16.63"N      116° 21' 02.48"W  
NAD 83: 46° 21' 16.25004"N      116° 21' 05.99341"W  
UTM Zone 11: Easting 549880.5      Northing 5133641.9

&

@ 2324 ft. Same Trail

NAD 27: 46° 21' 16.63"N      116° 21' 21.92"W  
NAD 83: 46° 21' 16.24959"N      116° 21' 25.43380"W  
UTM Zone 11: Easting 549880.5      Northing 5133641.8

&

@ 2364 ft. Same Trail.

NAD 27: 46° 21' 16.63"N      116° 21' 22.10"W  
NAD 83: 46° 21' 16.24959"N      116° 21' 25.61380"W  
UTM Zone 11: Easting 549461.2      Northing 5133638.4

29.

&

@ 2624 ft. Same Trail  
 NAD 27: 46° 21' 16.63"N      116° 21' 25.13"W  
 NAD 83: 46° 21' 16.24952"N      116° 21' 28.64386"W  
 UTM Zone 11: Easting 549396.4      Northing 5133637.9

&

@ 2673 ft. Same Lapwai- Kamiah Trail.  
 NAD 27: 46° 21' 16.63"N      116° 21' 26.37"W  
 NAD 83: 46° 21' 16.24942"N      116° 21' 29.88388"W  
 UTM Zone 11: Easting 549369.9      Northing 5133637.7

&

@ 2861 ft. Same Trail.  
 NAD 27: 46° 21' 16.63"N      116° 21' 29.41"W  
 NAD 83: 46° 21' 16.24942"N      116° 21' 32.92394"W  
 UTM Zone 11: Easting 549304.9      Northing 5133637.2

&

@ 4826 ft. Same Trail.  
 NAD 27: 46° 21' 16.63"N      116° 21' 57.04"W  
 NAD 83: 46° 21' 16.24878"N      116° 22' 00.55449"W  
 UTM Zone 11: Easting 548714.4      Northing 513 3632.4

T34N,R1E

South Between Sections 2 & 3 @ 3630 ft. Lapwai-Kamiah Trail.  
 NAD 27: 46° 18' 56.65"N      116° 18' 17.96"W  
 NAD 83: 46° 18' 56.26740"N      116° 18' 21.47103"W  
 UTM Zone 11: Easting 553434.4      Northing 5129351.1

West Between Sections 2 & 11 @ 3102 ft. Lapwai-Kamiah Trail.  
 NAD 27: 46° 18' 39.87"N      116° 17' 46.99"W  
 NAD 83: 46° 18' 39.48731"N      116° 17' 50.50062"W  
 UTM Zone 11: Easting 554101.3      Northing 5128839.1

North Between Sections 11 & 12 @ 792 ft. Lapwai-Kamiah Trail.  
 NAD 27: 46° 17' 55.56"N      116° 17' 02.31"W  
 NAD 83: 46° 17' 55.17623"N      116° 17' 05.82022"W  
 UTM Zone 11: Easting 555069.3      Northing 5127480

West Between Sections 12 & 13 @ 4587 ft. Lapwai-Kamiah Trail.  
 NAD 27: 46° 17' 47.54"N      116° 16' 52.34"W  
 NAD 83: 46° 17' 47.15607"N      116° 16' 55.85013"W  
 UTM Zone 11: Easting 555284.8      Northing 5127234.4

On East Boundary-North Between Sections 13 & 18 @ 3900 ft. Lapwai-Kamiah Trail  
 NAD 27 46° 17' 33.98"N      116° 15' 47.37"W  
 NAD 83: 46° 17' 33.59684"N      116° 15' 50.87923"W  
 UTM Zone 11: Easting 556678.6      Northing 5126828.6



Spalding, Idaho-1870

Courtesy of the University Of Idaho Library, Special Collections & Archives, PG-016-2a

T34N,R2E

North Between Sections 17 & 18 @ 2409 ft. Lapwai-Kamiah Trail.

NAD 27: 46° 17' 18.54"N	116° 14' 32.22"W
NAD 83: 46° 17' 18.15773"N	116° 14' 35.72842"W
UTM Zone 11: Easting 558291.1	Northing 5126367.2

West Between Sections 17 & 20 @ 1551 ft. Lapwai-Kamiah Trail.

NAD 27: 46° 16' 54.94"N	116° 13' 39.51"W
NAD 83 46° 16' 54.55778"N	116° 13' 43.01836"W
UTM Zone 11: Easting 559426	Northing 5125649.7

North Between Sections 20 & 21 @ 4400 ft. Lapwai-Kamiah Trail.

NAD 27: 46° 16' 24.06"N	116° 13' 17.26"W
NAD 83: 46° 16' 23.67683"N	116° 13' 20.76852"W
UTM Zone 11: Easting 559911.5	Northing 5124701

The Lapwai-Kamiah Trail joins the Lewiston to Kamiah Wagon Road in Section 21 and follows the wagon road into Township 34 North, Range 3 East. Continues to follow the wagon road through Sections 31, 32, 33 & 34, where it leaves the wagon road and enters Township 33 North, Range 3 East.

T33N,R3E

Lapwai-Kamiah Trail Enters This Township 300 ft. East Of The Corner Sections 33-34-3 & 4.

NAD 27: 46° 14' 18.28"N      116° 04' 27.32"W  
NAD 83: 46° 14' 17.90342"N      116° 04' 30.82624"W  
UTM Zone 11: Easting 571299      Northing 5129332.5

Trail Projected West Between Sections 3 & 10 @ 800 ft. Lapwai-Kamiah Trail.

NAD 27: 46° 13' 25.67"N      116° 03' 27.05"W  
NAD 83: 46° 13' 25.29265"N      116° 03' 30.55654"W  
UTM Zone 11: Easting 572609      Northing 5119332.5

Trail Projected East Between Sections 2 & 11 @ 1300 ft. Lapwai-Kamiah Trail.

NAD 27: 46° 13' 25.42"N      116° 02' 58.08"W  
NAD 83: 46° 13' 25.04333"N      116° 01' 57.6330"W  
UTM Zone 11: Easting 574599.7      Northing 5119348.8

&

@ 2100 ft. Lapwai-Kamiah Trail.

NAD 27: 46° 13' 25.42"N      116° 02' 46.54"W  
NAD 83: 46° 13' 25.04360"N      116° 02' 50.02625"W  
UTM Zone 11: Easting 573477.3      Northing 5119335.2

Trail Projected North Between Sections 2 & 11 @ 4500 ft. Lapwai-Kamiah Trail.

NAD 27: 46° 13' 18.13"N      116(02' 02.26"W  
NAD 83: 46° 13' 17.75434"N      116° 02' 05.76602"W  
UTM Zone 11: Easting 574428.2      Northing 5119121.2

COORDINATES FOR THE INDIAN TRAIL FROM KAMIAH TO NORTH FORK OF THE  
CLEARWATER RIVER

T34N,R2E

Junction with the Lapwai to Kamiah Trail

NAD 27F: 46° 16' 42.02"N      116 13' 09.76"W  
NAD 83: 46° 16' 41.63784"N      116° 13' 13.26892"W  
UTM Zone 11: Easting 560066.5      Northing 5125257.2

West Between Sections 16 & 21 @ 4224 ft. Kamiah-North Fork Clearwater Trail.

NAD 27: 46° 16' 54.89"N      116° 13' 01.93"W  
NAD 83: 46° 16' 54.50861"N      116° 13' 05.43811"W  
UTM Zone 11: Easting 560230.2      Northing 5125656.1

West Between Sections 16 & 9 @ 4422 ft. Kamiah-North Fork Clearwater Trail.

NAD 27: 46° 17' 47.56"N      116° 13' 04.43"W  
NAD 83: 46° 17' 47.18100"N      116° 13' 07.93761"W  
UTM Zone 11: Easting 560160.7      Northing 5127281.3

West Between Sections 4 & 9 @ 4554 ft. Kamiah-North Fork Clearwater Trail.

NAD 27: 46° 18' 39.87"N      116° 13' 06.04"W  
NAD 83: 46° 18' 39.49340"N      116° 13' 09.54710"W  
UTM Zone 11: Easting 560110.3      Northing 5128895.5

South Between Sections 4 & 5 @ 1485 ft. Kamiah-North Fork Clearwater Trail.

NAD 27: 46° 19' 18.09"N      116° 13' 16.57"W  
NAD 83: 46° 19' 17.71496"N      116° 13' 20.07679"W  
UTM Zone 11: Easting 559873.6      Northing 5130073

T35N,R2E

Projected: West On South Boundary Between Sections 32 & 5 @ 1500 ft. Kamiah-North Fork Trail

NAD 27: 46° 19' 32.17"N      116° 13' 37.96"W  
NAD 83: 46° 19' 31.79518"N      116° 13' 41.46679"W  
UTM Zone 11: Easting 559411.9      Northing 5130534.1

West Between Sections 29 & 32 @ 4323 ft. Kamiah-North Fork Clearwater Trail.

NAD 27: 46° 20' 25.29"N      116° 14' 18.40"W  
NAD 83: 46° 20' 24.91684"N      116° 14' 21.90651"W  
UTM Zone 11: Easting 558531.5      Northing 5132134.3

North Between Sections 19 & 20 @ 3168 ft. Kamiah-North Fork Clearwater Trail

NAD 27: 46° 21' 48.68"N      116° 14' 32.32"W  
NAD 83: 46° 21' 48.31050"N      116° 14' 35.82576"W  
UTM Zone 11: Easting 558209.3      Northing 5134705.4

East Between Sections 18 & 19 @ 2211 ft. Kamiah- North Fork Clearwater Trail.

NAD 27: 46° 22' 09.47"N      116° 15' 16.01"W  
NAD 83L 46° 22' 09.10057"N      116° 15' 19.51605"W  
UTM Zone 11: Easting 557269.7      Northing 5135338.2

T35N,R1`E

On East Boundary Township, North Between Sections 18 & 13 @ 1683 ft. Trail to North Fork.

NAD 27: 46° 22' 26.56"N      116° 15' 48.12"W  
NAD 83: 46° 22' 26.19062"N      116° 15' 51.62656"W  
UTM Zone 11: Easting 556578.8      Northing 5135859.3

West Between Sections 12 & 13 @ 13ft. Kamiah-North Fork Clearwater River Trail.

NAD 27: 46° 23' 02.09"N      116° 15' 48.47"W  
NAD 83: 46° 23' 01.72229"N      116° 15' 51.97624"W  
UTM Zone 11: Easting 556561.1      Northing 5136955.9

West Between Sections 1 & 12 @ 858 ft. Kamiah- North Fork Clearwater Trail.

NAD 27: 46° 23' 54.26"N      116° 16' 00.43"W  
NAD 83: 46° 23' 53.89446"N      116° 16' 03.93603"W  
UTM Zone 11: Easting 556290.8      Northing 5138563.8

T36N,R1E

West On South Boundary Of Section 36 @ 2900 ft. Kamiah-North Fork Clearwater Trail.

NAD 27: 46° 24' 47.22"N      116° 16' 29.52"W  
NAD 83: 46° 24' 46.85624"N      116° 16' 33.02625"W  
UTM Zone 11: Easting 555654.6      Northing 5140193.8

West Between Sections 25 & 36 @ 3600 ft. Kamiah-North Fork Clearwater Trail.

NAD 27: 46° 25' 39.18"N      116° 16' 40.06"W  
NAD 83: 46° 25' 38.81841"N      116° 16' 43.56608"W  
UTM Zone 11: Easting 555415      Northing 5141794.6

West Between Sections 25 & 24 @ 4125 ft. Kamiah- North Fork Clearwater Trail.

NAD 27: 46° 26' 31.64"N      116° 16' 47.21"W  
NAD 83: 46° 26' 31.28068"N      116° 16' 50.71584"W  
UTM Zone 11: Easting 555247.6      Northing 5143412.4

North Between Sections 13 & 14 @ 1155 ft. Kamiah-North Fork Clearwater Trail.

NAD 27: 46° 27' 35.89"N      116° 17' 04.00"W  
NAD 83: 46° 27' 35.53325"N      116° 17' 07.50578"W  
UTM Zone 11: Easting 554871.5      Northing 5145392.3

West Between Sections 12 & 13 @ 2220 ft. Kamiah- North Fork Clearwater Trail.

NAD 27: 46° 28' 15.96"N      116° 16' 19.70"W  
NAD 83: 46° 28' 15.60628"N      116° 16' 23.20423"W  
UTM Zone 11: Easting 555805      5146637.8

North Between Sections 7 & 12 @ 2277 ft. Kamiah-North Fork Clearwater Trail.

NAD 27: 46° 28' 38.91"N      116° 15' 47.88"W  
NAD 83: 46° 28' 38.55820"N      116° 15' 51.38313"W  
UTM Zone 11: Easting 556477      Northing 5147352.5

Projected: East Between Sections 1 & 12 @ 5000 ft. Kamiah-North Fork Clearwater Trail.

NAD 27: 46° 29' 08.18"N      116° 15' 51.80"W  
NAD 83: 46° 29' 07.82947"N      116° 15' 55.30297"W  
UTM Zone 11: Easting 556385.1      Northing 5148255.2

Projected: North Between Sections 2 & 1 @ 3000 ft. Kamiah- North Fork Clearwater Trail.

NAD 27: 46° 29' 37.60"N      116° 17' 02.39"W  
NAD 83: 46° 29' 37.24896"N      116° 17' 05.89480"W  
UTM Zone 11: Easting 554471.8      Northing 5149149.5



Projected: North Between Sections 2 & 3 @ 4000 ft. Kamiah- North Fork Clearwater Trail.

NAD 27: 46° 29' 47.63"N	116° 18' 15.48"W
NAD 83: 46° 29' 47.27746"N	116° 18' 18.98690"W
UTM Zone 11: Easting 553311	Northing 5149445.1

Projected: North Between Sections 3 & 4 @ 5200 ft. Kamiah-North Fork Clearwater Trail.

NAD 27: 46° 29' 59.78"N	116° 19' 30.29"W
NAD 83: 46° 29' 59.42600"N	116° 19' 33.79907"W
UTM Zone 11: Easting 551713.1	Northing 5149806.3



Tipi Complex-1905

Courtesy of University Of Idaho Library, Special Collections & Archives, PG-100-163.

#### COORDINATES FOR THE LEWIS & CLARK RETURN TRAIL, MAY & JUNE 1806

*The Author established this portion of the return route by using the Native-American trails of that time period as recorded by the early land surveyors from 1869 to 1900, and by matching the mileages recorded in the Lewis & Clark Journals.<sup>33</sup> Some Sections have been projected. This assessment begins at Bedrock Creek on the Clearwater River.*

T37N,R2W

North Between Sections 28 & 29 @ 1600 ft. Indian Trails NW & SE-Lewis Clark 1806.

NAD 27: 46° 31' 10.08"N	116° 35' 51.11"W
NAD 83: 46° 31' 09.69870"N	116° 35' 54.64738"W
UTM Zone 11: Easting 530795.9	Northing 5151833

35

---

<sup>33</sup> The Journals of Lewis & Clark, edited by Bernard Devote & The Definitive Journals Of Lewis & Clark, Volume 9 of the Nebraska Edition.

North Between Sections 27 & 28 @ 1304 ft. Lewis & Clark, May 7, 1806.

NAD 27: 46° 31' 07.23"N      116° 34' 35.69"W  
NAD 83: 46° 31' 06.85089"N      116° 34' 39.22575"W  
UTM Zone 11: Easting 532403.4      Northing 5151753.4

North Between Sections 26 & 27 @ 396 ft. Lewis & Clark, May 7, 1806.

NAD 27: 46° 30' 58.17"N      116° 33' 19.21"W  
NAD 83: 46° 30' 57.79310"N      116° 33' 22.74391"W  
UTM Zone 11: Easting 534034.5      Northing 5151482.8

West On The South Boundary of Section 35 @ 1945 ft. Lewis & Clark, May 7. 1806.

NAD 27: 46° 30' 01.78"N      116° 32' 30.96"W  
NAD 83: 46° 30' 01.40447"N      116° 32' 34.49124"W  
UTM Zone 11: Easting 535072.8      Northing 5149748.2

T36N,R2W

South Between Sections 1 & 2 @ 1200 ft. Lewis & Clark, May 7, 1806.

NAD 27: 46° 29' 50.50"N      116° 32' 02.92"W  
NAD 83: 46° 29' 50.12495"N      116° 32' 06.45050"W  
UTM Zone 11: Easting 535672.5      Northing 5149403.5

West Between Sections 1 & 12 @ 1800 ft. Lewis & Clark, May 7, 1806.

NAD 27: 46° 29' 10.10"N      116° 31' 13.27"W  
NAD 83: 46° 29' 09.72483"N      116° 31' 16.79910"W  
UTM Zone 11: Easting 536738.4      Northing 5148162.9

On East Boundary Of Township, North Between Sections 12 & 7 @ 3500 ft. Lewis & Clark.

NAD 27: 46° 28' 51.74"N      116° 30' 47.34"W  
NAD 83 46° 28' 51.36485"N 116° 30' 50.86842"W  
UTM Zone 11: Easting 537294.7      Northing 5147599.6

T36N,R1W

North Between Sections 7 & 8 @ 2162 ft. Lewis & Clark, May 7, 1806

NAD 27: 46° 28' 39.09"N      116° 29' 36.06"W  
NAD 83: 46° 28' 38.71632"N      116° 29' 39.58671"W  
UTM Zone 11: Easting 538817.1      Northing 5147218.7

North Between Sections 8 & 9 @ 1683 ft. Lewis & Clark, May 7, 1806.

NAD 27: 46° 28' 34.25"N      116° 28' 19.95"W  
NAD 83; 46° 28' 33.87813"N      116° 28' 23.47451"W  
UTM Zone 11: Easting 540441      Northing 5147080

North Between Sections 9 & 10 @ 2907ft. Lewis & Clark, May 7, 1806.

NAD 27: 46° 28' 45.57"N      116° 27' 04.89"W  
NAD 83: 46° 28' 45.20059"N      116° 27' 08.41243"W  
UTM Zone 11: Easting 542039.2      Northing 5147440.3

North Between Sections 10 & 11 @ 3300 ft. Lewis & Clark, May 7, 1806.

NAD 27: 46° 28' 48.67"N      116° 25' 49.12"W  
NAD 83: 46° 28' 48.30273"N      116° 25' 52.64027"W  
UTM Zone 11: Easting 543654.2      Northing 5147547.5

West Between Sections 11 & 14 @ 2700 ft. Lewis & Clark, May 7, 1806.

NAD 27: 46° 28' 15.66"N      116° 25' 11.95"W  
NAD 83: 46° 28' 15.29229"N      116° 25' 15.46914"W  
UTM Zone 11: Easting 544454.2      Northing 5146534.4

&

@ 1200 ft. Lewis & Clark, May 8, 1806.

NAD 27: 46° 28' 15.78"N      116° 24' 50.33"W  
NAD 83: 46° 28' 15.41287"N      116° 24' 53.84854"W  
UTM Zone 11: Easting 544915.2      Northing 5146541.5

North Between Sections 11 & 12 @ 1500 ft. Lewis & Clark, May 8, 1806.

NAD 27: 46° 28' 31.05"N      116° 24' 33.35"W  
NAD 83: 46° 28' 30.68397"N      116° 24' 36.86808"W  
UTM Zone 11: Easting 545273.9      Northing 5147931.5

&

@ 3043 ft. Lewis & Clark, May 8, 1806.

NAD 27: 46° 28' 46.01"N      116° 24' 33.57"W  
NAD 83: 46° 28' 45.64461"N      116° 24' 37.08810"W  
UTM Zone 11: Easting 545265.7      Northing 5147477.2

T36N,R1E

North Between Section 7 & 8 @ 3564 ft. Lewis & Clark, May 8, 1806.

NAD 27: 46° 28' 51.09"N      116° 22' 05.95"W  
NAD 83: 46° 28' 50.72875"N      116° 22' 09.46387"W  
UTM Zone 11: Easting 548412.2      Northing 5147658.5

North Between Sections 8 & 9 @ 1557 ft. Lewis & Clark, May 8, 1806.

NAD 27: 46° 28' 31.49"N      116° 20' 50.72"W  
NAD 83: 46° 28' 31.12986"N      116° 20' 54.23177"W  
UTM Zone 11: Easting 550021.2      Northing 5147066.6

North Between Sections 15 & 16 @ 4966 ft. Lewis & Clark, May 9, 1806.

NAD 27: 46° 28' 13.12"N      116° 19' 35.89"W  
NAD 83: 46° 28' 12.76100"N      116° 19' 39.39974"W  
UTM Zone 11: Easting 551621.8      Northing 5146513

North Between Sections 14 & 15 @ 2185 ft. Lewis & Clark, May 9, 1806.

NAD 27: 46° 27' 45.58"N      116° 18' 20.17"W  
NAD 83: 46° 27' 45.22172"N      116° 18' 23.67779"W  
UTM Zone 11: Easting 553244.1      Northing 5145676.9

North Between Sections 14 & 13 @ 1155 ft. Lewis & Clark, May 9, 1806.

NAD 27: 46° 27' 35.89"N      116° 17' 04.00"W  
NAD 83: 46° 27' 35.53325"N      116° 17' 07.50578"W  
UTM Zone 11: Easting 554871.5      Northing 5145392.3

*The route used by Lewis & Clark joined the trail from Kamiah to the North Fork of the Clearwater River. The expedition turned south and followed the North Fork Trail to Twisted Hair's camp some three miles south, where they camped for the night. On May 10, 1806 the expedition continued to follow the Kamiah to North Fork Clearwater River Trail until they reached a point in Township 34 North, Range 3 East. Therefore: use the North Fork Trail coordinates to track their route through this section.*

T34N,R3E

North Between Sections 31 & 32 @ 3135 ft. Lewis & Clark, May 10, 1806.

NAD 27: 46° 14' 49.28"N      116° 07' 00.79"W  
NAD 83: 46° 14' 48.90116"N      116° 07' 04.29688"W  
UTM Zone 11: Easting 568001.5      Northing 5121860.4

West On The South Boundary Of Section 32 @ 2400 ft. Lewis & Clark, May 10, 1806.

NAD 27: 46° 14' 18.22"N      116° 06' 25.56"W  
NAD 83: 46° 14' 17.84066"N      116° 06' 29.06708"W  
UTM Zone 11: Easting 568766.7      Northing 5120910.2

T33N,R3E

West Between Sections 5 & 8 @ 2800 ft. Lewis & Clark, May 10, 1806.

NAD 27: 46° 13' 25.62"N      116° 06' 25.88"W  
NAD 83: 46° 13' 25.23843"N      116° 06' 29.38785"W  
UTM Zone 11: Easting 568778.1      Northing 5119286.6

North Between Sections 8 & 9 @ 700 ft. Lewis & Clark, May 13, 1806.

NAD 27: 46° 12' 40.07"N      116° 05' 45.95"W  
NAD 83: 46° 12' 39.68746"N      116° 05' 49.45822"W  
UTM Zone 11: Easting 569649.4      Northing 5117890.4

West Between Sections 9 & 16 @ 700 ft. Lewis & Clark May, 13, 1806.

NAD 27: 46° 12' 33.03"N      116° 05' 01.33"W  
NAD 83: 46° 12' 32.64823"N      116° 05' 04.83798"W  
UTM Zone 11: Easting 570608      Northing 5117684.1



Native-American Men-Circa 1889

Courtesy of the University of Idaho Library Special Collections & Archives PG-100-332.

North Between Sections 11 & 12 @ 2100 ft. Lewis & Clark, May 13, 1806.

NAD 27: 46° 12' 54.51"N	116° 02' 01.77"W
NAD 83: 46° 12' 54.13339"N	116° 02' 05.27634"W
UTM Zone 11: Easting 574447.6	Northing 5118392.8

West Between Sections 1 & 12 @ 700 ft. Lewis & Clark, May 13, 1806.

NAD 27: 46° 13' 25.55"N	116° 00' 56.53"W
NAD 83: 46° 13' 25.17620"N	116° 01' 0.03544"W
UTM Zone 11: Easting 575833.5	Northing 5119368

T34N,R3E

West Between Sections 36 & 1 @ 2900 ft. Lewis & Clark, June 10, 1806.

NAD 27: 46° 14' 17.94"N	116° 01' 26.76"W
NAD 83: 46° 14' 17.56762"N	116° 01' 30.26495"W
UTM Zone 11: Easting 575166	Northing 5120977.1

West Between Sections 25 & 36 @ 2000 ft. Lewis & Clark, June 10, 1806.

NAD 27: 46° 15' 10.14"N	116° 01' 13.76"W
NAD 83: 46° 15' 09.77005"N	116° 01' 17.26421"W
UT Zone 11: Easting 575424.6	Northing 5122591.7

West Between Sections 25 & 24 @ 700 ft. Lewis & Clark, June 10, 1806.

NAD 27: 46° 16' 02.25"N	116° 00' 53.66"W
NAD 83: 46° 16' 01.88260"N	116° 00' 57.16365"W
UTM Zone 11: Easting 575835	Northing 5124205.4

T34N,R4E

South On The West Boundary Of Section 19 @ 550 ft. Lewis & Clark, June 10, 1806

NAD 27 46° 22' 02.19"N	116° 53' 21.40"W
NAD 83: 46° 22' 01.77479"N	116° 53' 24.94769"W
UTM Zone 11: Easting 508440.8	Northing 5134848.6

North Between Sections 18 & 17 @ 2198 ft. Lewis & Clark, June 10, 1806.

NAD 27: 46°17' 12.20"N	115° 59' 41.13"W
NAD 83: 46° 17' 11.83708"N	115° 59' 44.63265"W
UTM Zone 11: Easting 577360.2	Northing 5126384

North Between Sections 16 & 17 @ 4792 ft. Lewis & Clark, June 10, 1806.

NAD 27: 46° 17' 36.98"N	115° 58' 25.65"W
NAD 83: 46° 17' 36.61995"N	115° 58' 29.15222"W
Zone 11: Easting 578965.4	Northing 5127169.6

West Between Sections 9 & 16 @ 5196 ft. Lewis & Clark, June 10, 1806.

NAD 27: 46° 17' 42.19"N	115° 58' 23.88"W
NAD 83: 46° 17' 41.83019"N	115° 58' 27.38218"W
UTM Zone 11: Easting 579001.2	Northing 5127330.9

North Between Sections 3 & 4 @ 4110 ft. Lewis & Clark, June 10, 1806.

NAD 27: 46° 19' 16.01"N	115° 57' 09.13"W
NAD 83: 46° 19' 15.65550"N	115° 57' 12.63149"W
UTM Zone 11: Easting 580562.1	Northing 5130247.6

T35N,R4E

North Between Sections 34 & 35 @ 3085 ft. Lewis & Clark June 10, 1806.

NAD 27: 46° 20' 00.14"N	115°55' 55.94"W
NAD 83: 46° 19' 59.78876"N	115° 55' 59.44122"W
UTM Zone 11: Easting 582108.9	Northing 5131630.7

East Between Sections 26 & 35 & 1155 ft. Lewis & Clark, June 10, 1806.

NAD 27: 46° 20' 20.83"N      115° 55' 40.26"W  
NAD 83: 46° 20' 20.47984"N      115° 55' 43.76115"W  
UTM Zone 11: Easting 582435.5      Northing 5132273.8

East Between Sections 23 & 26 @ 2178 ft. Lewis & Clark, June 10, 1806.

NAD 27: 46° 21' 00.62"N      115° 55' 25.31"W  
NAD 83: 46° 21' 00.27155"N      115° 55' 28.81102"W  
UTM Zone 11: Easting 582738.4      Northing 5133506.3

*At this point the Crane Meadow Trail intersects the Lolo Trail and the expedition turned right and followed the Crane Meadow Trail to its junction with the Musselshell Trail in T34N,R6E.*

#### COORDINATES CONTINUE FOR THE LOLO TRAIL

North Between Sections 23 & 24 @ 2475 ft. Lolo Trail to Musselshell

NAD 27: 46° 21' 40.00"N      115° 54' 39.45"W  
NAD 83: 46° 21' 39.65386"N      115° 54' 42.95096"W  
UTM Zone 11: Easting 583701.9      Northing 5134735.2

#### T35N,R5E

West Between Sections 18 & 19 @ 4158ft. Lolo Trail to Musselshell.

NAD 27: 46° 22' 06.97"N      115° 53' 05.97"W  
NAD 83: 46° 22' 06.62666"N      115° 53' 09.47106"W  
UTM Zone 11: Easting 585687.7      Northing 5135595.5

North Between Sections 17 & 18 @ 4521 ft. Lolo Trail to Musselshell

NAD 27: 46° 22' 50.56"N      115° 52' 06.11"W  
NAD 83: 46° 22' 50.21921"N      115° 52' 09.61119"W  
UTM Zone 11: Easting 586947.4      Northing 5136959.1

West Between Sections 7 & 18 @ 462 ft. Lolo Trail to Musselshell

NAD 27: 46° 22' 58.75"N      115° 52' 13.24"W  
NAD 83: 46° 22' 58.40933"N      115° 52' 16.74117"W  
UTM Zone 11: Easting 5867915      Northing 5137209.7

North Between Sections 7 & 8 @ 1023 ft. Lolo Trail to Musselshell

NAD 27: 46° 23' 09.15"N      115° 52' 06.64"W  
NAD 83: 46° 23' 08.80978"N      115° 52' 10.14120"W  
UTM Zone 11: Easting 586927.9      Northing 5137532.7

North Between Sections 16 & 17 @ 4323 ft. Lolo Trail to Musselshell

NAD 27: 46° 22' 49.58"N      115° 50' 50.41"W  
NAD 83: 46° 22' 49.24065"N      115° 50' 53.91137"W  
UTM Zone 11: Easting 588564.8      Northing 5136952.2

North Between Section 15 & 16 @ 3399 ft. Lolo Trail to Musselshell.

NAD 27: 46° 22' 40.78"N      115° 49' 35.82"W  
NAD 83: 46° 22' 40.44185"N      115° 49' 39.32152"W  
UTM Zone 11: Easting 590162.2      Northing 5136704

North Between Sections 14 & 15 @ 1782 ft. Lolo Trail to Musselshell.

NAD 27: 46° 22' 24.55"N      115° 48' 20.70"W  
NAD 83: 46° 22' 24.21289"N      115° 48' 24.20162"W  
UTM Zone 11: Easting 591744.4      Northing 5136227.1

East Between Sections 14 & 23 @ 3052 ft. Lolo Trail to Musselshell.

NAD 27: 46° 22' 06.71"N      115° 47' 37.08"W  
NAD 83: 46° 22' 06.37329"N      115° 47' 40.58161"W  
UTM Zone 11: Easting 592714.7      Northing 5135690.6

North Between Sections 23 & 24 @ 429 ft. Lolo Trail to Musselshell.

NAD 27: 46° 21' 18.15"N      115° 47' 07.18"W  
NAD 83: 46° 21' 17.81266"N      115° 47' 10.68136"W  
UTM Zone 11: Easting 593376.5      Northing 5134201.6

T35N,R6E

North On West Line Of Section 30 @ 3795 ft. Lolo Trail to Musselshell

NAD 27: 46° 20' 56.97"N      115° 45' 51.10"W  
NAD 83: 46° 20' 56.63376"N      115° 45' 54.60126"W  
UTM Zone 11: Easting 595012.6      Northing 5133573.1

East Between Sections 19 & 30 @ 1790 ft. Lolo Trail to Musselshell.

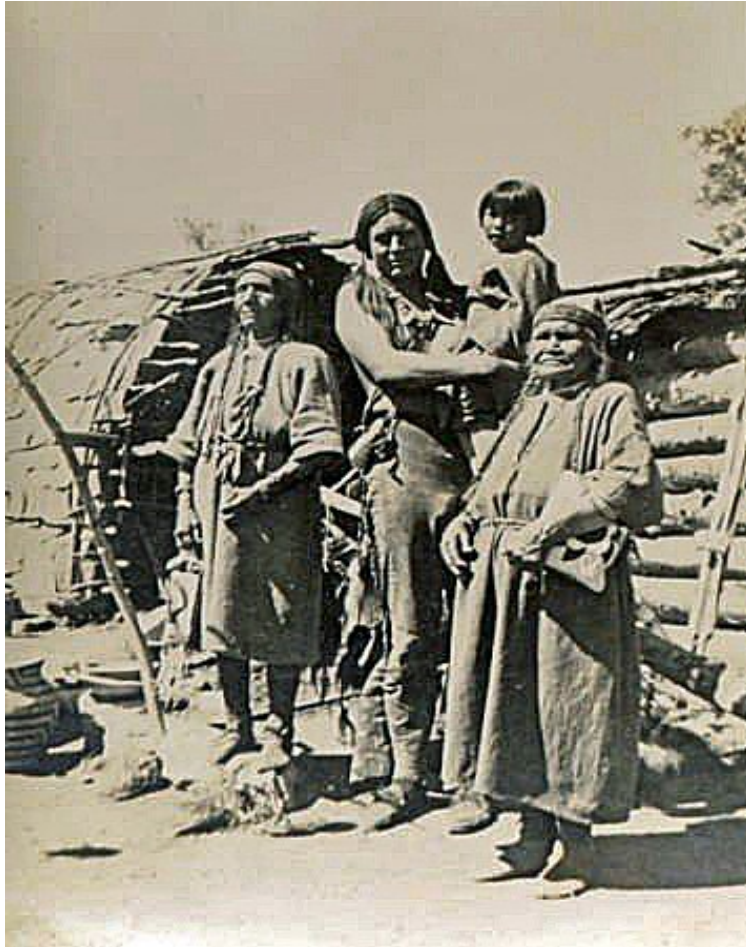
NAD 27: 46° 21' 11.46"N      115° 45' 25.09"W  
NAD 83: 46° 21' 11.12466"N      115° 45' 28.59139"W  
UTM Zone 11: Easting 595561.5      Northing 5134029

North Between Sections 19 & 20 @ 800 ft. Lolo Trail to Musselshell

NAD 27: 46° 21' 19.76"N      115° 44' 38.59"W  
NAD 83: 46° 21' 19.42585"N      115° 44' 42.09113"W  
UTM Zone 11: Easting 596551.2      Northing 5134300.9

*The coordinates for this route end here, as the route has been well recorded from this point eastward.*





Native-Americans Standing In Front Of Long Houses-Circa 1906.  
Courtesy of the University Of Idaho Library, Special Collections & Archives, PG-100-067.

#### COORDINATES FOR THE CRANE MEADOW TRAIL

*The Location of this trail was projected because an early map showing the trail was searched for but not found, and for reasons that are unknown, an early surveyor neglected to record the trail in his notes. This writer has walked 50 plus miles of Indian trails and my experiences with these trails helped in this projection.*

T35N,R4E

South Between Sections 25 & 26 @ 1100 ft. Lewis & Clark 1805 & 1806.

NAD 27: 46° 21' 03.20"N	115° 54' 40.01"W
NAD 83: 46° 21' 02.85260"N	115° 54' 43.51104"W
UTM Zone 11: Easting 583705.5	Northing 5133599.2

North between Sections 25 & 30 @ 600 ft. Lewis & Clark 1805 & 1806.

NAD 27: 46° 20' 27.13"N	115° 53' 22.02"W
NAD 83: 46° 20' 26.78310"N	115° 53' 25.52111"W
UTM Zone 11: Easting 585387.9	Northing 5132509

T35N,R5E

East Between Sections 31 & 30 @ 500 ft. Lewis & Clark 1805 & 1806.

NAD 27: 46° 20' 21.06"N      115° 53' 15.26"W  
NAD 83: 46° 20' 20.71306"N      115° 53' 18.76111"W  
UTM Zone 11: Easting 585535.6      Northing 5132323.7

North Between Sections 31 & 32 @ 1800 ft. Lewis & Clark 1805 & 1806.

NAD 27: 46° 19' 46.24"N      115° 52' 06.72"W  
NAD 83: 46° 19' 45.89350"N      115° 52' 10.22107"W  
UTM Zone 11: Easting 587015.6      Northing 5131269.8

T34N,R5E

South Between Sections 5 & 4 @ 500 ft. Lewis & Clark 1805 & 1806.

NAD 27: 46° 19' 23.68"N      115° 50' 51.97"W  
NAD 83: 46° 19' 23.33453"N      115° 50' 55.47096"W  
UTM Zone 11: Easting 588623.9      Northing 5130596.5

South Between Sections 3 & 4 @ 750 ft. Lewis & Clark 1805 & 1806.

NAD 27: 46° 19' 21.45"N      115° 49' 36.73"W  
NAD 83: 46° 19' 21.10622"N      115° 49' 40.23085"W  
UTM Zone 11: Easting 590233.8      Northing 5130551.3

North Between Sections 2 & 3 @ 2900 ft. Lewis & Clark 1805 & 1806.

NAD 27: 46° 19' 03.48"N      115° 48' 21.31"W  
NAD 83: 46° 19' 03.13749"N      115° 48' 24.81067"W  
UTM Zone 11: Easting 591854.9      Northing 5130020.8

East Between Section 2 & 11 @ 2500 ft. Lewis & Clark 1805 & 1806.

NAD 27: 46° 18' 34.49"N      115° 47' 45.56"W  
NAD 83: 46° 18' 34.14757"N      115° 47' 49.06045"W  
UTM Zone 11: Easting 592633      Northing 5129137.6

North Between Sections 12 & 11 @ 3400 ft. Lewis & Clark 1805 & 1806.

NAD 27: 46° 18' 15.40"N      115° 47' 06.43"W  
NAD 83: 46° 18' 15.05803"N      115° 47' 09.93025"W  
UTM Zone 11: Easting 593479      Northing 5128561.2

North Between Sections 13 & 18 @ 3049 ft. Lewis & Clark 1805 & 1806.

*This point called by surveyor Thomas Bates in 1926. Bates also called following three points.*

NAD 27: 46° 17' 38.11"N      115° 45' 51.18"W  
NAD 83: 46° 17' 37.76898"N      115° 45' 54.67978"W  
UTM Zone 11: Easting 595106.6      Northing 5127435.2

T34N,R6E

East Between Sections 7 & 18 @ 3049 ft. Lewis & Clark 1805 & 1806.

NAD 27: 46° 17' 42.20"N      115° 45' 07.57"W  
NAD 83: 46° 17' 41.86017"N      115° 45' 11.06967"W  
UTM Zone 11: Easting 596037.6      Northing 5127576.1

&

@ 3953 feet Lewis & Clark 1805 & 1806.

*This point is the junction of the Crane Meadow Trail and the Musselshell Trail called by Bates.*

NAD 27: 46° 17' 42.32"N      115° 44' 54.76"W  
NAD 83: 46° 17' 41.98049"N      115° 44' 58.25956"W  
UTM Zone 11: Easting 596311.6      Northing 5127584.1

COORDIANATES FOR POINTS OF INTEREST.

*The coordinates for these points are not absolute. Rather, they are intended to reduce search areas in the event that future researchers and archaeologists attempt to determine the exact location of any given campsite, of other point of interest in this assessment.*

*Clearwater River Crossing, May 7, 1806*

This is an estimated crossing based on the idea that the Clearwater River would propel the expedition down river for some distance. The actual crossing may have started a little further up stream depending on flow conditions at that time.

NAD 27: 46° 30' 27.79"N      116° 33' 00.62"W  
NAD 83: 46° 30' 27.41361"N      116° 33' 04.15262"W  
UTM Zone 11: Easting 534436      Northing 5150547.4

*Lewis & Clark Camp Night of May 7, 1806*

This camp was on Big Canyon Creek a short distance south of present day Peck, Idaho. Very close to the confluence of Little Canyon Creek. It was approximately 18 miles from Pine Creek & 11.2 miles from Bed Rock Creek.

NAD 27: 46° 28' 04.86"N      116° 24' 55.52"W  
NAD 83: 46° 28' 04.49226"N      116° 24' 59.03866"W  
UTM Zone 11: Easting 544807.1      Northing 5146203.6

*Lewis & Clark Camp Night of May 8, 1806*

A footnote on page #307 of The Definitive Journals of Lewis & Clark, Volume 9 of the Nebraska Edition, indicates that the camp was on a small creek flowing south into Little Canyon Creek. However, based on the location of the trail, this writer believes the camp was on the head of a small stream flowing north to the Clearwater River.

NAD 27 46° 28' 32.15"N      116° 20' 58.52"W  
NAD 83: 46° 28' 31.78969"N      116° 20' 02.03199"W  
UTM Zone 11: Easting 551134.2      Northing 5147096.2

*Lewis & Clark Camp At Twisted Hair's Camp, May 9, 1806*

The camp area indicated in this assessment measures (map distance) 6 miles from the May 8<sup>th</sup> camp and 9.1 miles from Canoe Camp. The camp was on the trail known in this assessment as the Kamiah to the North Fork of the Clearwater Trail. It was this trail that “Willard” traveled to get the ammunition and pack saddles stored at Canoe camp.

NAD 27: 46° 27' 36.15”N      116° 17' 04.26”W  
NAD 83: 46° 27' 36.15000”N      116° 17' 07.76579”W  
UTM Zone 11: Easting 544865.7      Northing 5145411.3

*Lewis & Clark Camp at Broken Arm's Camp, night of May 10 to morning of May 13, 1806*

The expedition continued to follow the North Fork of the Clearwater Trail until it reached the headwaters of Suzie Creek, where it turned more southerly and dropped into Lawyer Canyon. Sgt. John Ordway estimated the distance between the two camps as 20 miles. This writer measured the distance on modern USGS Quad Maps as 19.6 miles.

NAD 27: 46° 12' 41.29”N      116° 06' 50.08”W  
NAD 83: 46° 12' 40.90598”N      116° 06' 53.58868”W  
UTM Zone 11: Easting 568274.9      Northing 5117912.5

*Lewis & Clark Camp May 14 to morning of June 10, 1806*

On the morning of May 13 the expedition moved east to the mouth of Lawyer Creek. The following morning the party moved a short distance down stream and crossed the Clearwater River. The exact crossing point is unknown but this writer suggests they crossed near the present day gauging station because the river narrows at this point. It should also be noted that on page 309 of the Journals of Lewis & Clark, Volume 9 of the Nebraska Edition, foot note # 3 is wrong. Kamiah was never upstream from Lawyer Creek.

NAD 27: 46° 14' 26.67”N      116° 01' 41.96”W  
NAD 83: 46° 14' 26.29762”N      116° 01' 45.46494”W  
UTM Zone 11: Easting 574837.2      Northing 5121242.5

*Lewis & Clark Camp on night of June 10, 1806*

This is the same spot where the expedition camped in September of 1805. Camp location was determined by the number of hours spent on the trail & recorded by Sgt. Ordway, the mileage measured to Jim Ford Creek, and review of the Nomination Form for the Weippe Prairie. Everyone in the party rode a horse and was tagged to a pack animal. This writer calculated they were averaging about 1.73 mile per hour.

NAD 27: 46° 20' 47.20”N      115° 54' 07.30”W  
NAD 83: 46° 20' 46.85277”N      115° 54' 10.80108”W  
UTM Zone 11: Easting 584411.4      Northing 5133115

*Place where expedition found two deer hanging on June 15, 1806 was probably Crane Meadow which is some 7.6 miles from the June 10<sup>th</sup> camp.*

NAD 27: 46° 22' 16.87”N      115° 47' 55.31”W  
NAD 83: 46° 22' 16.44535”N      115° 47' 58.81163”W  
UTM Zone 11: Easting 592320.4      Northing 5135998.3

*The place where the expedition stopped for midday meal June 15, 1806, was probably near the junction of the Crane Meadow Trail and the Musselshell Trail. Based on the poor condition of the trail and a speed of some 1.73 miles per hour this writer estimates they stopped to eat at approximately 1:20 PM.*

NAD 27: 46° 17' 42.32"N      115° 44' 54.76"W  
NAD 83: 46° 17' 41.98049"N      115° 44' 58.25956"W  
UTM Zone 11: Easting 596311.6      Northing 5127584.1

*North Landing of Craig's Ferry*

NAD 27: 46° 23' 07.60"N      116° 10' 34.48"W  
NAD 83: 46° 23' 07.23873"N      116° 10' 37.98358"W  
UTM Zone 11: Easting 563266.1      Northing 5137059.4

*South Landing of Craig's Ferry*

NAD 27: 46° 23' 03.27"N      116° 10' 30.73"W  
NAD 83: 46° 23' 02.90860"N      116° 10' 34.23360"W  
UTM Zone 11: Easting 563347.6      Northing 5137059.4

## INTEGRITY

All four routes in this assessment have been heavily impacted by civilization for the past 150 years. Farming and road building has destroyed most of the original trails, but a review of these routes on Google Earth indicates that some sections may still exist today.

There is a slight chance that a short section of the Lewiston to Kamiah Wagon Road may be found in T33N,R3E, Sections 2 & 3. In addition, there could be a portion of the Kamiah to North Fork Clearwater Trail in this same township but in sections 3 & 11.

There is a very good chance, due to the tough terrain, the Lapwai to Kamiah Trail still exists where it crossed Big Canyon Creek.

## SIGNIFICANCE

All four of these routes are significant as they most likely existed and were being used by the Nez Perce People long before the appearance of Lewis & Clark in 1805. It is probable that the two wagon roads documented in this assessment were Indian trails the white settlers improved to make use of wagons.

The Lewiston to Pierce City road was significant in the early 1860's as miners and prospectors hurried over the route to look for gold north of the Clearwater River and was likely the route used as gold seekers began expanding south into the furthest reaches of the Clearwater and Salmon Rivers. One of the earliest ferries in Idaho was built on this route and it served the people of the Nezperce Prairie into the early 1900's.

The Kamiah to the North Fork of the Clearwater River Trail was used by Lewis & Clark on their return journey in 1805 as they passed through Nez Perce, Lewis, Clearwater and Idaho Counties.



Portrait of a young Native American Circa 1886  
Courtesy of the University of Idaho Library, Special Collections & Archives PG-100-322.

## RECOMMENDATIONS

(A) There is a need for the counties of Nez Perce, Lewis and Clearwater to establish Historic Preservation Commissions in their respective counties. After such commissions are established, they should determine if there are remaining values on any of the aforementioned routes.

(B) The individual county preservation commission should also determine if any or all of the Points of Interest are of historic value and are of interest to the public at large.

## REFERENCES

Thomas, Hahn W.  
Soil Survey of Lewis & Nez Perce Counties  
Natural Resources Conservation Service.

Ordway, Sgt. John & Floyd, Charles  
The Definitive Journals of Lewis & Clark  
Volume # 9, Nebraska Edition.

Defenbach, Byron  
IDAHO-The Place and Its People, Volume #1  
The American Historical Society.

Victor, Francis Fuller  
1870 River Of The West, Volume #1

Parker, Rev. Samuel  
1838 Parker's Exploring Tour Beyond The Rocky Mountains.

Hodge, Louise Stockard Ells  
History Of Greer, Idaho

Elsensohn, Sister M. Freda  
1947 Pioneer Days In Idaho County, Volume # 1.

Western Historic Publishing Company  
1903 History Of North Idaho

BLM-GLO Records  
Land Survey Plats & Notes.

Steve F. Russell  
Lolo Trail National Historic Land Mark  
A Brief History

Nomination Form  
National Register Of Historic Places  
Weippe Prairie

Steve F. Russell  
Sgt. Ordway's Salmon River Fishing Expedition.