

*ASSESSMENT OF NEE ME POO TRAIL  
DUG BAR, OREGON TO  
MUSSELHELL RANGER STATION,  
NEZ PERCE-CLEARWATER NATIONAL FOREST, IDAHO*



Chief White Bird on the left, unidentified woman & No Hunter, brother of Looking Glass.  
At Fort MacLeod, Alberta, Canada 1879.  
Courtesy of the Glenbow Museum, Calgary, Alberta, Canada.  
Albert George Kush Collection.

Mapping of the Nee Me Poo Trail through Idaho, Lewis and Clearwater Counties:

For

The Idaho County Historic Preservation Commission

&

The Idaho State Historical Society

Assessment Prepared by

James G. Huntley

130 Grangeville Truck Route

Grangeville, Idaho, 83530

February 2018 – May 2018

## INTRODUCTION

From 1867 to 1934 the General Land Office contracted with private land surveyors to survey and subdivide the Townships in Idaho, Lewis and Clearwater Counties. The earliest survey contracts required the setting of section corners and the recording of features on the ground, such as roads, trails, cabins, fences and fields. It appears about 1872 the features requirement changed because surveys of some townships did not record all the roads and trails and in one instance only cabin locations were recorded. However, about 1880 the features requirement appears to have been reinstated and roads and trails were being recorded again.

The changing recording methods resulted in having to *project the location* of the Nee Me Poo Trail in several places. In Township 27 North, Range 1 East and in Township 28 North, Range 3 West the trail was projected by using a 1927 & 1937 Nez Perce Forest Maps. In Township 32 North, Ranges 2 & 3 East a map found in the book *Northwest Fights & Fighters* was used to project a section of the trail. Other sources, such as, Don Morrow's, "*Early Trails And Roads in Idaho County*", and Sister M. Elsensohn's map in Volume #1, *Pioneer Days in Idaho County*, were also used.

To date four assessments representing some 638 miles of historic roads and trails have been completed, two, of which, can be found on the Idaho County Web Page. The following assessment deals only with the Nee Me Poo Trail and begins at Dug Bar on the Snake River and ends some 178 miles later at the Musselshell Ranger Station, in Clearwater County. The first three miles of this assessment are located in Oregon on the west side of the Snake River.

This route existed long before the first European arrived in Idaho with the Lewis & Clark expedition. Sections of this trail use the same track as the Florence Trail from Tolo Lake to Russel Bar, the Lewiston to Mountain House Wagon Road from Lawyer Creek to just southeast of Foster's Grave, the Lolo Trail from Kamiah to the Musselshell Ranger Station, the Boise Trail from Camp Howard Cow Camp to the mouth of Rock Creek, and crosses the Cottonwood to Elk City Trail some four miles southeast of Cottonwood.

## HISTORIC BACKGROUND

In 1861 gold was discovered in the Pierce, Elk City and Florence areas, and white men began pouring into the lands of the Nez Perce, violating the 1855 treaty. The U. S. Government did nothing to stop these incursions, and resentment toward the white intruders began to build. The discovery of gold and the other rich natural resources found in the Nez Perce homeland, became very desirable to the U. S. Government, and in 1863 a new treaty was proposed, which reduced the size of the Nez Perce lands by 90%. Chief Lawyer, who had converted to Christianity, signed the new treaty, but the non-christian tribal members never approved or agreed to the treaty.

Fourteen years after Lawyer signed the new treaty, the U.S. Army met with the tribal leaders at Lapwai, and demanded they give up the land they had occupied for centuries. General Howard threatened force, and gave the Nez Perce only 30 days to move to the Lapwai Reservation. Trying to comply with the General's demands, the Nez Perce left the Wallowa country and by June 1, 1877, some 750 Nez Perce were camped at Tolo Lake, in what is now Idaho County, Idaho.

On June 13, 1877 three young men left the encampment at Tolo Lake and went over the White Bird Divide to the Salmon River. Traveling up the river, they stopped a few miles above John Day Creek at the Divine ranch. Resentment in the three Young warriors, which had been building for years, overflowed and culminated in the death of Divine and seven other white settlers. After two days of revenge killings, all hope of a peaceful move to the Lapwai Reservation was lost.

After the killings, the Nez Perce believed the only peace they would find would be in Canada, and on June 15, 1877 the long 1,170 mile journey began. Pursued by the army, some 750 men, women, and children, carrying all their belongings and herding some 1500 head of horses, began a desperate flight for freedom along a trail that extends from Wallowa Lake, Oregon to the Bear Paw Battlefield in Montana.

Those who fought, fled and bled, felt they had been betrayed by their own people. This became one of the saddest and most sorrowful events in western history. Today the trail is known as, “The Nez Perce (Nee Me Poo) National Historic Trail”.

## METHODOLOGY

The route detailed in this assessment was noted and plotted where it crossed section lines and is based on early Forest Service maps, a map found in the book *Northwest Fights And Fighters*, and in the survey notes of Allen Thompson 1867 & 1872, John B. David 1871, David Thompson 1872, Edson Briggs 1889, 1892 & 1908, David Waite 1893, James W. Shannon 1896, Albert Oliver 1901, Albert L. Geddes 1904, Frank Maxwell 1906, 1910 & 1911, and Thomas Bates 1916.

Coordinates for the route were done using a Terrain Navigator program which recorded 1927 NADCON coordinates. The 1927 data was then converted to 1983 NADCON using North American Datum Conversion 2.11. This allows future researchers to use GPS units to locate trail positions on the ground.

Township, range and section lines will shift slightly depending on the year a map is made, which can affect the accuracy of the coordinates. However, by following the original surveyed distance along a section, an accuracy of 10 feet or less should be attainable. It is possible to transfer these coordinates to Google Earth, but level of accuracy remains unknown to this writer.

Points of historic importance and interest have been located using descriptions found in land survey notes, historic texts and the research of others. For example, a Native American campsite on Lawyer Creek was noted in “Ordway's Fishing Expedition”, by Steve Russell. The rifle pits and Nez Perce rock fortifications were noted by surveyor Edson Briggs. These points are not intended to be entirely accurate, rather they are intended to give researchers a general area for further study.

## PHYSICAL SETTING

The trail in this assessment covers a large area in Idaho County and lesser areas in Lewis and Clearwater Counties. In Idaho County the trail extends from Dug Bar on the Snake River northeast to Tolo Lake, south to the Salmon River and Russell Bar, northwest to the Salmon River-Snake River Divide, North to Lawyer Creek, Southeast to Cottonwood Creek, Northeast to Red Rock Creek, East to the South Fork of the Clearwater River and North to the Idaho-Clearwater line on Lolo Creek.

In Clearwater County the trail area extends north from Lolo Creek to the Musselshell Ranger Station. In Lewis County the trail area extends from Billy Creek Crossing, Northwesterly to Lawyer Creek and the old stage road from Lewiston.

Geography along the trail changes and major stratigraphic units in the Snake River Canyon are Permian and Triassic volcanogenic rocks, Triassic limestone, Triassic and Jurassic shale and sandstone, Miocene plateau basalt, and Quaternary deposits. The Permian and Triassic volcanic rocks in the Snake River Canyon are assigned to the Seven Devils Group.<sup>1</sup>

Where the trail encounters the Salmon River Canyon, the river is deeply entrenched in the Columbia Plateau. The Canyon walls or “breaks” of the Salmon River are almost barren of vegetation other than drought resistant plants and coarse grasses. Lower slopes are steep, but higher slopes become more gentle. Tributary streams along the river have cut deep V-shaped canyons.<sup>2</sup>

The trail traverses the Camas Prairie before dropping into the Clearwater Canyon near the present town of Stites. The Camas Prairie is part of the 1700 square mile Clearwater Plateau and is characterized by the Columbia River Basalt flows. Approximately 34-40 million years ago, during the mid-Tertiary period, three basalt flows (Imnaha, Grand Ronde, and Saddle Mountain ) extruded east from vents in Oregon and Washington resulting in a succession of faulted basalt layers. The soils along this portion of the trail are gently sloping to hilly uplands, moderately sloping to steep canyons and nearly level bottom lands.<sup>3</sup>

The area from the Camas Prairie north to the Weippe Prairie is characterized by rolling basalt plateaus that range in elevation from 2000 to 4000 feet. Native vegetation is bunch grass at the lower elevations and coniferous at the higher elevations.

The climate in the area is influenced by the wide range in elevations and the topography found in the area. In the lower plateaus and valleys the climate is relatively dry and mild. The mildness, particularly in winter, is a result of warm Pacific airmails and the sheltering effect of the higher plateaus that surround most of the area. The higher plateaus are significantly cooler and more moist than the lower reaches.<sup>4</sup>

### 5.

---

1 The Permian and Triassic Seven Devils Group, Western Idaho And Northeastern Oregon, by Tracy L. Vallier.

2 Pamphlet 74, University Of Idaho, Warren R. Wagner 1944.

3 Castelin-1976.

4 Soil Survey of Lewis and Nez Perce Counties, by Thomas W. Hahn, Natural Resources Conservation Service.

Annual precipitation is about 13 inches in the river bottoms and 22 inches on the prairies. The average summer temperature is about 74 degrees in the river bottoms and 65 degrees on the prairies, with a growing season on the prairies from May through September.

Elevations along this trail vary from 990 feet at Dug Bar to 5855 feet a short distance south of Camp Howard Cow Camp. The elevation at the Rice Creek Crossing is 1300 feet, at Tolo Lake 3240 feet, at Russell Bar 1500 feet, at Billy Creek Crossing 1083 feet and at Lawyer Creek & the Stage Road 3870 feet.



Baby in Tekash (Cradleboard)

Courtesy of the University Of Idaho Library, Special Collections & Archives PG-5-100-023



## THE NEE ME POO TRAIL IN THIS ASSESSMENT AREA

This assessment begins on the southern end of Dug Bar. The starting point was picked because a portion of the trail has been identified and signed from Lone Pine Saddle to Lower Dug Bar. After viewing with Google Earth, and finding no visible trace of the trail on the east side of the Canyon, this writer used the location of the trails as mapped by the U. S. Forest Service in 1927 & 1937. The old maps indicate the trail crossed the Snake River at the mouth of Dug Bar Creek. After crossing the river the trail ties into trail locations noted by the land surveyor in 1916. However, this section of the trail needs to be “ground truthed” to determine the exact location.

The trail continues upriver to Gettie Creek and turns up the creek until it reaches the confluence of White Bird Creek. Here the trail turns north up White Bird Creek and continues up the creek until reaching a point some two miles west of Camp Howard Ridge. It then turns southeast for a short distance, before turning northeast and tying into the Boise Trail about one mile northeast of the settlement of Joseph. *(There was also a trail up Wolf Creek for about 2 miles which tied into the White Bird Creek trail. Today there is a road all the way down Wolf Creek to the Snake River. However, since early maps do not indicate a trail all the way up Wolf Creek, this assessor considers Gettie Creek the best option for the original trail location.)*

The Boise Trail is followed until it crosses the Salmon River at the mouth of Rice Creek. From there the Nee Me Poo Trail continues northeast up Rocky Canyon for some 7 ½ miles, where it turns southeast and climbs up out of the canyon onto the plain above. From this point the trail continues easterly to Tolo Lake. Tolo Lake is significant because of the events that occurred around the lake, which precipitated in the outbreak of the Nez Perce War of 1877. The distance from Dug Bar to Tolo Lake was measured as 40.66 miles.

From Tolo Lake the trail follows the Florence Trail south as far as the Horseshoe Bend, crossing at Russell Bar. After crossing the Salmon River the trail went west for about 2 miles where it turned north, crossing Deer Creek after one mile, and continued north for another mile. At this point the trail turned Northwest up a steep ridge and climbed up to the Salmon River-Snake River Divide, where it once again turned north following the Boise Trail. Following the Boise Trail past the Joseph Cemetery it continued until reaching a point in Township 29 North, Range 1 West, Section 4 where the trails divided and the Nee Me Poo Trail turned Northwest towards Billy Creek. The trail continued Northwest past Boles and on to the head waters of Billy Creek. The trail then followed the creek down to its confluence with the Salmon River. The distance from Tolo Lake to Billy Creek Crossing is 53.05 miles.

After crossing the Salmon River the trail went northwest, first following the river upstream for about 1 ½ miles, then climbed up over some very high and rugged bluffs. Today there is a jeep trail that follows the original. An early land surveyor did call a trail on the east-west section line between sections 12 & 13 that the jeep trail passes through. However, from that point on to the crossing of Maloney Creek, the trail is not very evident. A review with Google Earth indicates a trail that passes through some very rugged bluffs and it is uncertain if this is only a foot-trail or if livestock could pass along it. “Ground truthing” should definitely be done on this section.

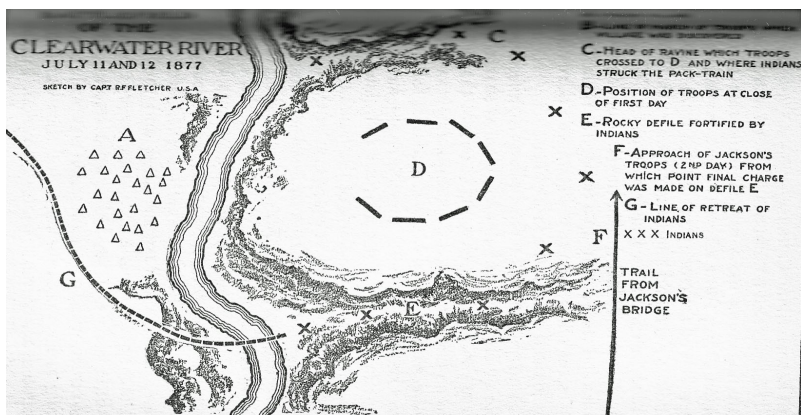
After crossing Maloney Creek the trail was projected northeast for some 5 miles, reaching an Indian trail on the north-south line of Section 19, Township 32 North, Range 1 West called by an early land survey. From this point the trail continued northeast until reaching the stage road from Lewiston at the crossing of Lawyer Creek.

From Lawyer Creek the trail followed the stage road southeast to a point some ½ mile southeast of Foster's Grave, where it turned south and paralleled the Florence Trail for some 2 ½ miles. At this point the trail turned east, crossing the Florence Trail, the stage road to Mount Idaho, and the Cottonwood to Elk City Trail. As it crossed the Elk City Trail, the Nee Me Poo Trail turned northeast to Red Rock Canyon and Yellow Bull Spring.

There was a minimum of three Indian trails that passed through Yellow Bull Spring, which indicates the spring was an important stopping place, and two of these trails led to Kamiah. From Yellow Bull Spring the Nee Me Poo Trail followed a Kamiah trail east for about 2 miles and then turned southeast down a long ridge into Cottonwood Creek, entering Cottonwood Creek Canyon just below the confluence of Red Rock Creek. From this point the trail went down Cottonwood Creek to its mouth on the South Fork of the Clearwater River.<sup>5</sup>

The Nez Perce were camped at the mouth of Cottonwood Creek on the west side of the South Fork of the Clearwater River, when General Howard, who had crossed up river at Johnson Bridge, stumbled across the Nez Perce Camp. The Nez Perce quickly engaged Howard and his 400 troops, in a battle that spanned two days. In the afternoon of the second day, the Nez Perce withdrew when the army opened fire with cannon and Gatling gun.

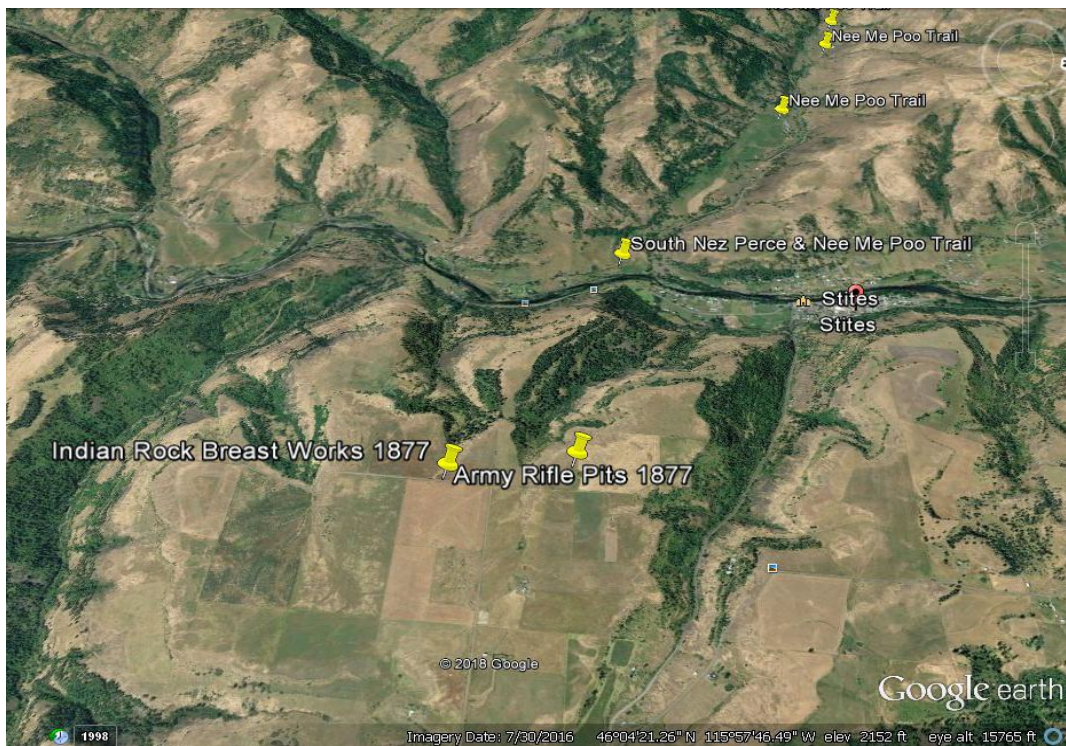
When the Nez Perce withdrew from the Clearwater Battle it appears they went back up Cottonwood Creek for about 3 miles. Then they turned north up a ridge in Section 24, Township 32 North, Range 3 East. They continued north for approximately 5 miles, where they connected with the Yellow Bull Spring to Kamiah trail. The trail continues north to Kamiah, crosses the Middle Fork of the Clearwater River and follows the Lolo Trail north to the Musselshell Ranger Station, where this assessment ends. *It is possible the Nez Perce were camped on the South Fork intending to leave Idaho by the South Nez Perce Trail, but Howard accidentally cut off that option.*



Sketch Map Of The Clearwater Battle Field July 11 & 12 1877  
 Copied From The Book Northwest Fights & Fighters, Page 157, 1928 Edition.

<sup>5</sup> Yellow Wolf, His Own Story, L. V. McWhorter, Caxton Printers-1986, Pages 75-77.





Withdrawal (Nee Me Poo Trail) Looking Northwest From Army Rifle Pits At Clearwater Battle Field  
A Google Earth Photo

## HISTORIC OVERVIEW/CHRONOLOGICAL TIME LINE

1805-1806: The Lewis and Clark expedition passed through Idaho going to the Pacific Ocean and returning to the United States the following year. They became the first known Euro-Americans to pass through, what would become the 43<sup>rd</sup> State in the Union.<sup>6</sup>

1811: Donald McKenzie, accompanied by four other men, came across the Seven Devils Mountains, caught up with Robert McClellan at present day Lucile, and traveled on down the Salmon River to White Bird. There he struck an Indian trail that took him to the Camas Prairie, and on to the Clearwater River. He traveled down the Clearwater River to present day Lewiston.<sup>7</sup>

1835: In October of 1835, the Reverend Samuel Parker, with a party of Nez Perce Indians, traveled over the Southern Nez Perce Trail and crossed the Camas Prairie, camping at Yellow Bull Spring.<sup>8</sup>

1836: The Reverend Henry Spalding, with his wife Elisa, arrive at Lapwai and built a cabin about two miles above the mouth of Lapwai Creek. A year later the Spaldings move down the creek. Apparently by 1837 Spalding's Mission was functioning.<sup>9</sup>

9.

6 IDAHO-The Place And Its People, Bryon Defenbach, Volume #1, The American Historical Society, 1933 Pages 80-91.  
7 IDAHO-The Place And Its People, Bryon Defenbach, Volume #1, The American Historical Society, 1933 Pages 118-119  
8 Parker's Exploring Tour, Beyond The Rocky Mountains, Rev. Samuel Parker A.M. Pages 144-117.  
9 IDAHO-The Place And its People, Bryon Defenbach, Volume #1, The American Historical Society, 1933 Pages 202-203

1848: Idaho becomes part of the Oregon Territory.

1853: On March 17<sup>th</sup>, all of Idaho north of the Salmon River became part of the new Washington Territory.<sup>10</sup>

1861: Gold was first discovered in the Pierce area, and was soon followed by discovery of this gleaming metal in the Elk City and Florence areas. These discoveries would forever change the lives of the Nez Perce People.<sup>11</sup>

1863: Chief Lawyer signed a new treaty with the U. S. Government. It was this treaty that ceded the greater portion of the Camas Prairie and all the treaty land to the south to the U.S. Government. Congress did not ratify the new treaty for several years, but ratification was instrumental in starting the Indian War of 1877.<sup>12</sup>

1867: Allen Thompson surveyed a large portion of the Camas Prairie. He was followed by numerous other surveyors from 1870 to the early 1930's.<sup>13</sup>

1875: The Territorial Legislature moved the boundary of Idaho County north to Lawyer Creek. The County now encompassed most of the Camas Prairie and its boundaries<sup>14</sup>would be adjusted again in the years 1885, 1889 and 1891.

1877: June 1: Chief Joseph's band of Nez Perce begin arriving at Tolo Lake as ordered by General Howard some thirty days before. At that time there were "two beautiful crystal lakes."<sup>15</sup>

June 13: Three Indians departed the encampment at Tolo Lake, taking the trail to the Salmon River. Going upriver they stopped some six miles above John Day Creek at a place occupied by one Richard Divine, an old retired English Sailor. They killed Divine for his rifle and camped there for the night.

June 14: The three Indians, who had killed Divine, broke camp and went back downriver where they slew several more settlers at several different locations. Later this same day word reached the Nortons at the Cottonwood Way Station, who upon hearing about the slayings, packed a few belongings and accompanied by a few other people, stared toward Mount Idaho. Between 9:30 and 10:00 PM, as it was approaching dark they were attacked by a group of Nez Perce warriors. Several people were killed and/or wounded in the attach. The Nortons were some six miles northwest of Mount Idaho when the attack took place.<sup>16</sup>

June 16: Colonel Perry, who had left Lapwai the day before arrived at Mount Idaho in the afternoon. Here he gathered up an additional half dozen citizen volunteers and started his troops for the Salmon River about 10:00 P.M.<sup>17</sup>

---

10 IDAHO-The Place And Its People, Volume #1, Byron Defenbach, The American Historical Society, Page 239.

11 Numerous history books on this subject can be found in any library.

12 Illustrated History Of North Idaho, Western Historic Publishing Company, 1903, Pages 138 & 139.

13 BLM-GLO land records and survey notes.

14 Illustrated History Of North Idaho, Western Historic Publishing Company, 1903 Pages 399, 400 & 402.

15 Illustrated History Of North Idaho, Western Historic Publishing Company, 1903, Page 51.

16 Illustrated History Of North Idaho, Western Historic Publishing Company, 1903, Pages 52 & 53.

17 Northwest Fights And Fighters, Doubleday, Doran & Company, 1928, Cyrus Townsend Brady, Page 99.

June 17: Perry's troop reached the head of White Bird Canyon about 1:00 A.M, halted and rested until just before dawn. Dawn was breaking as the troop proceeded down the canyon. The troop was nearing the bottom of the canyon when the Indians attacked, and ½ hour later Colonel Perry was in full retreat. Lt. W. R. Parnell, whose men were on Perry's left, began retreating and fighting a rear guard action back up the trail, they had entered the canyon on. Two hours later, Perry and Parnell regrouped on top of the divide, and moved back down the trail to the Johnson ranch. Perry continued to retreat towards Grangeville, as Parnell continued fighting a rear guard action It was only 7:00 A.M. when Parnell found himself fighting his way back through Tule Swamp. The Indian pursued the army within two miles of Mount Idaho.<sup>18</sup>

June 18: The settlers along the Salmon River, who had survived the attacks on the 13<sup>th</sup> & 14<sup>th</sup>, were busy building a fort at Slate Creek. A Nez Perce woman called, Too-La, had gone to Florence, warned the miners of the hostilities, and returned with twelve men additional men. This brought the number of defenders to sixty-eight. By the evening of the 18<sup>th</sup>, the Indians had burned ten dwellings, three stores and one shop on the Camas Prairie and the Salmon River.<sup>19</sup>

June 22: By this date General Howard had reached Lapwai with troops to reinforce Perry who was waiting for reinforcements at Mount Idaho. Howard left Fort Lapwai for Mount Idaho about noon and that evening camped at Craig's Junction on the Lewiston to Pierce City Wagon Road.

June 23: Howard breaks camp and marches 19 miles to the Norton Ranch at Cottonwood, arriving about 1:30 P. M. General Howard examined the mess left in the Norton house by rummaging Indians. Howard and his troops camped here through Sunday the 24<sup>th</sup> of June, 1877. *(This writer has measured the trail that comes due south from Craig's Junction to the old stage road from Lewiston. The distance along the trail and the stage road to Cottonwood measures 19 map miles.*

June 25: Howard sends the infantry to Johnson's Ranch and Howard and the Calvary go to Mount Idaho. After seeing Perry, they go on to the Johnson Ranch.<sup>20</sup> The following day Howard and his army travel to White Bird, bury their dead and begin chasing the Nez Perce through the Salmon River Mountains.

July 3: Captain Whipple, who had been ordered by Howard to go to Cottonwood so he could join Perry there, ordered two scouts, Charles Blewett and William Foster, to locate the Indians. Descending into Lawyer Creek they came under fire by the Indians. Blewett was killed and Foster returned to Cottonwood. Lieutenant Rains was ordered to take Foster and ten men as an advance party and locate the Indians while a large contingent of Calvary was to follow them.

The Indians sprang a trap and opened fire. Foster was the first killed, and fell in the middle of the stage road. Rains led his men up hill about ½ mile, where they dismounted and made a stand. Only half of his men reached this point, the rest were scattered along the road. While Rains was firing at Indians on his left, other Indians had circled around to his right and opened fire killing Rains and the rest of his men. William Foster was buried alongside the road where he fell. A few days later

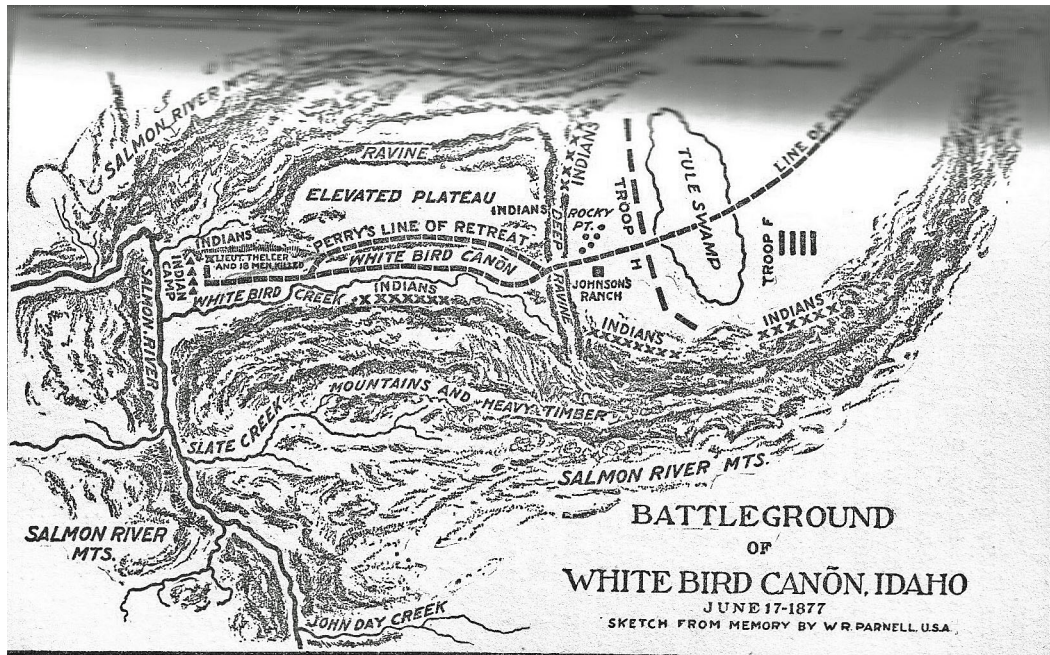
---

18 Northwest Fights And Fighters, Doubleday, Doran & Company, 1928, Cyrus Townsend Brady, Pages 100 to 111.

19 Illustrated History Of North Idaho, Western Historic Publishing Company, 1903, Pages 60 to 63.

20 Illustrated History Of North Idaho, Western Historic Publishing Company, 1903, Page 61.

the bodies of Rains and his men were recovered and buried in a mass grave near the Norton house. Later they were exhumed and reburied at Fort Lapwai.<sup>21</sup>



Sketch Map Showing Army's Line Of Retreat June 17,1877.  
Copied From The Book Northwest Fights And Fighters.

July 4: John Crooks rode from Cottonwood to Mount Idaho, carrying a message from Captain Perry asking for reinforcements.

July 5: Led by Lieutenant L. B. Randall, seventeen volunteers answered Perry's call. As the group approached Cottonwood they were intercepted by a group of Nez Perce warriors. Randal ordered his men to charge and they broke through the Indian's line. After reaching a point in the prairie that was higher than the rest of the landscape, they dismounted and the fighting began. During the fighting, which lasted about one and one half hours, Lieutenant Randall and B. F. Evans were killed and A. B. Leland, H. Howser and Charles Johnson were wounded. Howser died later from his wounds. Others in the fight who survived unscathed were: L. P. Wilmot, J.L. Cleary, James Buchanan, William B. Beemer, Charles W. Case, E.J. Bunker, Frank D. Vansise, C.M. Day, George Riggins, A.D. Bartly, H.C. Johnson, and F.A. Fenn.

Lieutenant McConville, who was with Howard in the Salmon River Mountains, was ordered to return to Cottonwood and shore up Perry's forces. After a very hard forced march, McConville and his troop arrived in Cottonwood in the evening after the battle was over.

<sup>21</sup> Yellow Wolf, His Own Story, L.V. McWhorter, Pages 71-74, Pioneer Days in Idaho County Volume #1, Sister M. Freda Elsensohn, Pages 300-303, Illustrated History of North Idaho, Western Historical Publishing Company, 1903, Page 63.



July 9: Howard is back in the Mount Idaho, Grangeville area after giving up the chase in the Salmon River Mountains. The following day he sent part of his force to Jackson's Bridge on the South Fork of the Clearwater River.<sup>22</sup>

July 10: Howard, with the rest of his force, some 400 men, join the troops already at Jackson's Bridge. After camping that night in the vicinity of present day Harpster, the troops moved out on the Morning of July 11<sup>th</sup>.

July 11: Howard and his troops moved eastward and apparently intersected the Southern Nez Perce Trail and turned northeast towards present day Kooskia. About noon Howard's army was spotted by two Indians herding horses and as the Indians moved their horses up Cottonwood Creek the Battle of the Clearwater started.<sup>23</sup>

July 12: The battle of the Clearwater continued for several hours, then in the afternoon, the Nez Perce gave up the fight and withdrew up Cottonwood Creek and the heights beyond.<sup>24</sup>

July 13: Howard, who had spent the night of the 12<sup>th</sup> at the site of the abandoned Indian Camp, started in pursuit of the Nez Perce. He arrived at Kamiah just in time to see the last of the Indians cross the river and start up the Lolo Trail. After unsuccessfully firing numerous rounds across the river, Howard gave up the chase and sent a small contingent of troops to Dunwell Ferry in an effort to cut off the Nez Perce at a junction in the trail on the Weippe Prairie. Howard did not take up his pursuit of the Nez Perce again until the 26<sup>th</sup> of July.<sup>25</sup>

July 23: By this date Joseph and the Nez Perce had crossed out of Idaho at Lolo pass and were camped at Lolo Hot Springs. About this time a troop from Fort Missoula heard about their encampment and built a barricade & trench across a narrow part of the canyon, some two miles below the hot springs. This barricade later became known as Fort Fizzle, because on the July 25 the Nez Perce found a way around the barricade and proceeded on.

*This marked the end of the Indian war in Idaho, but the war continued for another two months. The battle of the Bear's Paw began on September 30, 1877 and ended five days later with Joseph's surrender.*

*It should be noted that the book Northwest Fights And Fighters has a sketch map of the Clearwater River that shows the location of Dunwell Ferry on the Clearwater. It appears that this is the same location as Craig's Ferry and later the Greer Ferry. At the same time the Billy Creek crossing is noted in the book as Craig's Ferry.*

*This writer has never been able to show there was ever a ferry at Billy Creek. I suggest that members of the Army, who later wrote about this war, confused the two locations, not realizing that Craig's Ferry and Dunwell Ferry were at the same location. Meanwhile historians have continued to propagate this error.*

---

22 Illustrated History Of North Idaho, Western Historical Publishing Company, 1903, Page 61.

23 Northwest Fights And Fighter, Cyrus Townsend Brady, Pages 155 & 156.

24 Northwest Fights And Fighters, Cyrus Townsend Brady, Pages 155 to 160. & Yellow Wolf, His Own Story, L. V. McWhorter, Caxton Printers, 1986, Pages 95 to 101.

25 Illustrated History Of North Idaho, Western Historical Publishing Company, 1903, Page 66.

## COORDINATES OF THE NEE ME POO TRAIL

*The coordinates for this trail will begin in Oregon at Dug Bar and follow the trail, as the Nez Perce used it in 1877. First to Tolo Lake, then south to Horse Shoe Bend on the Salmon River, then west to the Boise Trail then north to Billy Creek Crossing, on north to the old stage road from Lewiston, then southeast to Cottonwood, then east and northeast to Red Rock Canyon, then east to the South Fork of the Clearwater River and then north to Kamiah and the Musselshell Ranger Station.*

### *Township 28 North, Range 3 West*

Birch Creek Crossing: Trail follows location of 1927 U. S. Forest Service trail.

NAD 27: 45° 48' 11.54"N	116° 41' 16.77"W
NAD 83: 45° 48' 11.10566"N	116° 41' 20.29268"W
UTM Zone 11: Easting 524169	Northing 5070654.3

Fence Creek Crossing: Trail follows location of 1927 Forest Service trail

NAD 27: 45° 47' 20.95"N	116° 41' 23.64"W
NAD 83: 45° 47' 20.51614"N	116° 41' 27.16304"W
UTM Zone 11: Easting 524026.8	Northing 5070654.4

Dug Creek Crossing: Trail follows location of 1927 Forest Service trail.

NAD 27: 45° 46' 40.38"N	116° 41' 01.77"W
NAD 83: 45° 46' 39.94676"N	116° 41' 05.29316"W
UTM Zone 11: Easting 524503.9	Northing 5069404.2

Saddle In Ridge Southeast of Dug Creek: Trail follows location of 1927 Forest Service trail.

NAD 27: 45° 46' 39.14"N	116° 40' 37.98"W
NAD 83: 45° 46' 38.70698"N	116° 40' 41.50300"W
UTM Zone 11: Easting 525017.8	Northing 5069368

Crossing At Mouth Of Dug Creek: 1927 U.S. Forest Service Maps shows crossing in this area.

NAD 27: 45° 47' 04.37"N	116° 40' 05.71"W
NAD 83: 45° 47' 03.93697"N	116° 40' 09.23267"W
UTM Zone 11: Easting 525711.5	Northing 5070149.5

South Between Sections 11 & 12 @ 1300 ft. Nee Me Poo Trail north & south.

NAD 27: 45° 46' 59.92"N	116° 39' 28.51"W
NAD 83: 45° 46' 59.48734"N	116° 39' 32.03246"W
UTM Zone 11: Easting 526515.3	Northing 5070015.5

South Between Section 12 & 7 @ 700 ft. Nee Me Poo Trail northeast & southwest.

NAD 27: 45° 47' 00.78"N	116° 38' 14.21"W
NAD 83: 45° 47' 00.34796"N	116° 38' 17.73200"W
UTM Zone 11: Easting 528119.5	Northing 5070049.2



*Township 28 North, Range 2 West*

North Between Sections 23 & 24 @ 3118 ft. Nee Me Poo Trail northeast & southwest.

NAD 27: 45° 45' 01.90"N      116° 32' 03.56"W  
NAD 83: 45° 45' 01.47322"N      116° 32' 07.07887"W  
UTM Zone 11: Easting 536144.3      Northing 5066421.8

West Between Sections 12 & 13 @ 3894 ft. Nee Me Poo Trail north & south.

NAD 27: 45° 46' 15.59"N      116° 31' 43.77"W  
NAD 83: 45° 46' 15.16208"N      116° 31' 47.28924"W  
UTM Zone 11: Easting 536558.5      Northing 5068698.5

West Between Sections 1 & 12 @ 2525 ft. Nee Me Poo Trail north & south.

NAD 27: 45° 47' 06.90"N      116° 31' 24.70"W  
NAD 83: 45° 47' 06.47131"N      116° 31' 28.21951"W  
UTM Zone 11: Easting 536960.9      Northing 5070284.4

South Between Sections 22 & 23 @ 165 ft. Nee Me Poo Trail northwest & southeast.

NAD 27: 45° 45' 22.03"N      116° 33' 17.41"W  
NAD 83 45° 45' 21.60214" N      116° 33' 20.92965"W  
UTM Zone 11: Easting 534545.2      Northing 5067034

South Between Sections 7 & 8 @ 633 ft. Nee Me Poo Trail east & west.

NAD 27: 45° 47' 01.25"N      116° 37' 01.71"W  
NAD 83: 45° 47' 00.81856"N      116° 37' 05.23155"W  
UTM Zone 11: Easting 529684.9      Northing 5070071

East Between Sections 6 & 7 @ 1122 ft. Nee Me Poo Trail east & west.

NAD 27: 45° 47' 07.30"N      116° 37' 58.55"W  
NAD 83: 45° 47' 06.86800"N      116° 38' 02.07189"W  
UTM Zone 11: Easting 528456.7      Northing 5070251.9

&

@ 2376 ft. Nee Me Poo Trail east & west.

NAD 27: 45° 47' 07.67"N      116° 37' 40.90"W  
NAD 83: 45° 47' 07.23815"N      116° 37' 44.42178"W  
UTM Zone 11: Easting 528837.8      Northing 5070265.1

*Township 28 North, Range 1 West*

West on the North Boundary Between Sections 6 & 31 @ 300 ft. Nee Me Poo Trail NW & SE.

NAD 27: 45° 48' 04.76"N      116° 30' 18.62"W  
NAD 83> 45° 48' 04.33075"N      116° 30' 22.13967"W  
UTM Zone 11: Easting 538376.7      Northing 5072078.7

South Between Sections 5 & 6 @ 4600 ft. Nee Me Poo Trail northwest & southeast.

NAD 27: 45° 47' 19.76"N      116° 29' 31.23"W  
NAD 83: 45° 47' 19.33214"N      116° 29' 34.74886"W  
UTM Zone 11: Easting 539408.4      Northing 5070696.4

West Between Sections 5 & 8 @ 2409 ft. Nee Me Poo Trail northeast & southwest.

NAD 27 45° 47' 11.97"N      116° 28' 55.60"W  
NAD 83: 45° 47' 11.54275"N      116° 28' 59.11844"W  
UTM Zone 11: Easting 540179.3      Northing 5070460.9

&

@ 3168 ft. Nee Me Poo Trail northwest southeast.

NAD 27: 45° 47' 11.97"N      116° 29' 06.38"W  
NAD 83: 45° 47' 11.54261"N      116° 29' 09.89854"W  
UTM Zone 11: Easting 539946.5      Northing 5070459.4

South Between Sections 4 & 5 @ 1485 ft. Nee Me Poo Trail northeast & southwest.

NAD 27: 45° 47' 50.68"N      116° 28' 21.70"N  
NAD 83: 45° 47' 50.25244"N      116° 28' 25.21854"W  
UTM Zone 11: Easting 540903.4      Northing 5070480.9



Veterans of the 1877 Nez Perce War, Gathered in Grangeville 1895.

Courtesy of the University of Idaho Library, Special Collections & Archives PG-5-117-06b.

*Township 29 North, Range 1 West*

On the South Boundary of Township, West Between Sections 33 & 4 @ 3100 ft. N.M.P. Trail.

NAD 27: 45° 48' 04.95"N      116° 27' 50.98"W  
NAD 83: 45° 48' 04.52257"N      116° 27' 54.51841"W  
UTM Zone 11: Easting 541563.2      Northing 5072105.2<sup>26</sup>

West Between Sections 28 & 33 @ 2400 ft. Nee Me Poo Trail, north and south.

NAD 27: 45° 48' 57.04"N      116° 27' 40.38"W  
NAD 83: 45° 48' 56.67598"N      116° 27' 43.93788"W  
UTM Zone 11: Easting 541780.7      Northing 5073716.3

West Between Sections 21 & 28 @ 2013 ft. Nee Me Poo Trail north and south.

NAD 27: 45° 49' 49.11"N      116° 27' 42.26"W  
NAD 83: 45° 49' 48.68078      116° 27' 38.17945"W  
UTM Zone 11: Easting 541894.1      Northing 5075322.1

West Between Sections 16 & 21 @ 2541 ft. Nee Me Poo Trail northwest and southeast.

NAD 27: 45° 50' 42.19"N      116° 27' 41.55"W  
NAD 83: 45° 50' 41.75967"N      116° 27' 45.07011"W  
UTM Zone 11: Easting 541734.5      Northing 5076959.2

West Between Sections 9 & 16 @ 3630 Nee Me Poo Trail north and south.

NAD 27: 45° 51' 33.91"N      116° 27' 56.04"W  
NAD 83: 45° 51' 33.47849"N      116° 27' 59.56080"W  
UTM Zone 11: Easting 541411.2      Northing 5078553.2

West Between Sections 4 & 9 @ 2574 ft. Nee Me Poo Trail northeast and south.<sup>27</sup>

NAD 27: 45° 52' 26.26"N      116° 27' 39.96"W  
NAD 83: 45° 52' 25.83770"N      116° 27' 43.48128"W  
UTM Zone 11: Easting 541747.1      Northing 5080171.2

North Between Sections 4 & 5 @ 4210 ft. Nee Me Poo Trail northwest and southeast

NAD 27: 45° 53' 07.71"N      116° 28' 21.14"W  
NAD 83: 45° 53' 07.27634"N      116° 28' 24.66200"W  
UTM Zone 11: Easting 540850.9      Northing 5081444.5

North Between Sections 3 & 4 @ 4844 ft. Nee Me Poo Trail northeast and southwest.

NAD 27: 45° 53' 14.43"N      116° 27' 06.23"W  
NAD 83: 45° 53' 13.99724"N      116° 27' 09.75162"W  
UTM Zone 11: Easting 542464      Northing 5081662.8

---

<sup>26</sup> This is a common point between the trail to Tolo Lake & the "War" trail after the battle at White Bird. It is also the point where the Nee Me Poo Trail begins following the Boise Trail.

<sup>27</sup> At this point the "War" trail turns northwest and the Tolo Lake trail turns northeast and follows the Boise Trail.

*Township 30 North, Range 1 West*

North Between Sections 34 & 35 @ 2145 ft. Nee Me Poo Trail northeast and southwest.

NAD 27: 45° 53' 39.42"N      116° 25' 51.93"W  
NAD 83: 45° 53' 38.98778"N      116° 25' 55.45149"W  
UTM Zone 11: Easting 544059.9      Northing 5082445.2"W

West Between Sections 26 & 35 @ 3511 ft. Nee Me Poo Trail northeast and southwest.

NAD 27: 45° 54' 10.73"N      116° 25' 26.64"W  
NAD 83: 45° 54' 10.29754"N      116° 25' 30.16174"W  
UTM Zone 11: Easting 544597.9      Northing 5083415.4

Salmon River Crossing Near Rice Creek: Nee Me Poo Trail

NAD 27: 45° 54' 44.39"N      116° 24' 27.73"W  
NAD 83: 45° 54' 43.96"N      116° 24' 31.25"W  
UTM Zone 11: Easting 545859.6      Northing 5084463.6

Point where Nee Me Poo Trail Crosses Moughmer point ridge: point projected

NAD 27: 45° 54' 28.96"N      116° 24' 06.07"W  
NAD 83: 45° 54' 28.53"N      116° 24' 09.59"W  
UTM Zone 11: Easting 546329.8      Northing 5083990.9

West Between Sections 24 & 25 @ 2000 ft. Nee Me Poo Trail northeast and southwest.

NAD 27: 45° 55' 03.59"N      116° 23' 50.42"W  
NAD 83: 45° 55' 03.15789"N      116° 23' 53.94193"W  
UTM Zone 11: Easting 546658.8      Northing 5085062.1

*Township 30 North, Range 1 East*

East Between Sections 18 & 19 @ 1050 ft. Nee Me Poo Trail northeast and southwest.

NAD 27: 45° 55' 55.85"N      116° 23' 07.13"W  
NAD 83: 45° 55' 55.41753"N      116° 23' 10.65245"W  
UTM Zone 11: Easting 547578.9      Northing 5086682.1

North Between Sections 17 & 18 @ 5100 ft. Nee Me Poo Trail northeast and southwest.

NAD 27: 45° 56' 46.57"N      116° 22' 05.39"W  
NAD 83: 45° 56' 46.13746"N      116° 22' 08.91291"W  
UTM Zone 11: Easting 548896.1      Northing 5088257.8

West Between Sections 8 & 17 @ 1680 ft. Nee Me Poo Trail east and west.

NAD 27: 45° 56' 48.79"N      116° 21' 14.43"W  
NAD 83: 45° 56' 48.35815"N      116° 21' 17.95275"W  
UTM Zone 11: Easting 459992.7      Northing 5088335.1

North Between Sections 16 & 17 @ 4700 ft. Nee Me Poo Trail east and west (projected.)

NAD 27: 45° 56' 42.72"N      116° 20' 50.39"W  
NAD 83: 45° 56' 42.28860"N      116° 20' 53.91256"W  
UTM Zone 11: Easting 550511.8      Northing 5088152

North Between Sections 15 & 16 @ 3100 ft. NEE Me Poo Trail east and west (projected.)

NAD 27: 45° 56' 27.39"N      116° 19' 35.74"W  
NAD 83: 45° 56' 26.95994"N      116° 19' 39.26202"W  
UTM Zone 11: Easting 552123      Northing 5087692.3

North Between Sections 14 & 15 @ 1000 ft Nee Me Poo Trail east and west (projected.)

NAD 27: 45° 56' 06.62"N      116° 18' 20.59"W  
NAD 83: 45° 56' 06.19138"N      116° 18' 24.11136"W  
UTM Zone 11: Easting 553746.7      Northing 5087065.2

North Between Sections 13 & 14 @ 150 ft. Nee Me Poo Trail east & west (projected.)

NAD 27: 45° 55' 58.09"N      116° 17' 05.64"W  
NAD 83: 45° 55' 57.66259"N      116° 17' 09.16088"W  
UTM Zone 11: Easting 555363.1      Northing 5086816.2

*Township 30 North, Range 2 East*

On west Boundary Section 19, North Between Sections 19 & 24 @ 2300 ft. N.M.P. (projected.)

NAD 27: 45° 55' 27.91"N      116° 15' 49.76"W  
NAD 83: 45° 55' 27.48419"N      116° 15' 53.27999"W  
UTM Zone 11: Easting 557005.8      Northing 5085899.6

West Between Sections 19 & 30 @ 2800 ft. Nee Me Poo Trail northwest and southeast.

NAD 27: 45° 55' 04.78"N      116° 15' 14.19"W  
NAD 83: 45° 55' 04.35509"N      116° 15' 17.70940"W  
UTM Zone 11: Easting 557778.6      Northing 5085192.9

North Between Sections 30 & 29 @ 2900 ft Nee Me Poo & Florence Trail Junction.

NAD 27: 45° 54' 40.90"N      116° 14' 34.92"W  
NAD 83: 45° 54' 40.47637"N      116° 14' 38.43864"W  
UTM Zone 11: Easting 558631.5      Northing 5084463.9

*From this point the Nee Me Poo Trail followed the Florence Trail to Russel Bar a short distance north of Horse Shoe Bend, where the Nee Me Poo Trail crossed the Salmon River. In addition, from this point to its end, the Nee Me Poo Trail became a war trail.*

*Coordinates for this section can be found in the Florence Trail Assessment.*



Pioneers of Idaho County: All in the County between 1861 & 1874. Photo:1895  
 Standing L-R: Alda Davis, John Riggins, G.V. Smith, George Riggins  
 Seated L-R: Charles Flinn, William Corman, Cyrus Overman, Joe Barker.  
 Courtesy of the University of Idaho Library, Special Collections & Archives PG-5-117-06a.

*Township 27 North, Range 1 East*

South between Sections 14 & 15 @ 4138 ft. Common Point Between Nee Me Poo & Florence Trail.

NAD 27: 45° 40' 26.63"N	116° 18' 21.01"W
NAD 83: 45° 40' 26.21820"N	116° 18' 24.51335
UTM Zone 11: Easting 553989.7	Northing 5058055.7

East Between Sections 15 & 22 @ 1200 feet Nee Me Poo Trail east & west.

NAD 27: 45° 40' 15.24"N	116° 19' 18.91"W
NAD 83: 45° 40' 14.82762"N	116° 19' 22.41395"W
UTM Zone 11: Easting 552740	Northing 5057693.5

North Between Sections 15 & 16 @ 100 ft. Nee Me Poo Trail east and west.

NAD 27: 45° 40' 16.36"N	116° 19' 35.50"W
NAD 83: 45° 40' 15.94737"N	116° 19' 39.00422"W
UTM Zone 11: Easting 552380.8	Northing 5057725

West Between Sections 16 & 21 @ 200 ft. Nee Me Poo Trail southwest and northeast.

NAD 27: 45° 40' 15.24"N	116° 20' 36.22"W
NAD 83: 45° 40' 14.82656"N	116° 20' 39.72512
UTM Zone 11: Easting 551067.3	Northing 5057679.5



South Between Sections 21 & 20 @ 200 ft. Nee Me Poo Trail east and west.

NAD 27: 45° 40' 13.39"N      116° 20' 50.70"W  
NAD 83: 45° 40' 12.97639"N      116° 20' 54.20529"W  
UTM Zone 11: Easting 550754.5      Northing 5057619.9

North Between Sections 5 & 6 @ 800 ft. Nee Me Poo Trail northwest and southeast.

NAD 27: 45° 42' 07.51"N      116° 22' 04.59"W  
NAD 83: 45° 42' 07.09343"N      116° 22' 08.09887"W  
UTM Zone 11: Easting 549127.9      Northing 5061128.9

South Between Sections 1 & 6 @ 350 ft. Nee Me Poo Trail northwest and southeast.

NAD 27: 45° 42' 47.74"N      116° 23' 24.36"W  
NAD 83: 45° 42' 47.32170"N      116° 23' 27.87076"W  
UTM Zone 11: Easting 547393.5      Northing 5062357

North Between Sections 8 & 9 @ 1287 ft. Nee Me Poo Trail east and west.

NAD 27: 45° 41' 20.35"N      116° 20' 50.67"W  
NAD 83: 45° 41' 19.93523"N      116° 20' 54.17681"W  
UTM Zone 11: Easting 550738.3      Northing 5059686.3

West Between Sections 17 & 20 @ 2310 ft. Nee Me Poo & East Branch of Boise Trail.

NAD 27: 45° 40' 14.87"N      116° 21' 23.48"W  
NAD 83: 45° 40' 14.45591"N      116° 21' 26.98528"W  
UTM Zone 11: Easting 550044.9      Northing 5057659.8

West Between Sections 8 & 17 @ 264 ft. Nee Me Poo Trail north and south.

NAD 27: 45° 41' 07.23"N      116° 20' 53.31"W  
NAD 83: 45° 41' 06.81542"N      116° 20' 56.81655"W  
UTM Zone 11: Easting 550684.5      Northing 5059281

West Between Sections 5 & 8 @ 825 ft. Nee Me Poo Trail north and south.

NAD 27: 45° 41' 59.84"N      116° 21' 01.60"W  
NAD 83: 45° 41' 59.42440"N      116° 21' 05.10785"W  
UTM Zone 11: Easting 550492      Northing 5060903.1

*Township 28 North, Range 1 West*

North Between Sections 35 & 36 @ 1240 ft. Boise Trail northeast and southwest.

*Note: Nee Me Poo Trail junctions with Boise Trail 4500 feet northeast of this point.*

NAD 27: 45° 42' 59.25"N      116° 24' 37.63"W  
NAD 83: 45° 42' 58.83055"N      116° 24' 41.14192"W  
UTM Zone 11: Easting 545806.8      Northing 5062700.3

North Between Sections 25 & 26 @ 5059 ft. Nee Me Poo Trail northwest and southeast.  
NAD 27: 45° 44' 32.94"N      116° 24' 38.16"W  
NAD 83: 45° 44' 32.51900"N      116° 24' 41.67373"W  
UTM Zone 11: Easting 545774      Northing 5065591.6

West Between Sections 23 & 26 @ 528 ft. Nee Me Poo Trail northwest and southeast.  
NAD 27: 45° 44' 34.80"N      116° 24' 45.39"W  
NAD 83: 45° 44' 34.37887"N      116° 24' 48.90384"W  
UTM Zone 11: Easting 545617.4      Northing 5065647.9

West Between Sections 14 & 23 @ 3894 ft. Nee Me Poo Trail northwest and southeast.  
NAD 27: 45° 45' 27.51"N      116° 25' 32.85"W  
NAD 83: 45° 45' 27.08734"N      116° 25' 36.36518"W  
UTM Zone 11: Easting 544580.1      Northing 5067267.1

North Between Sections 14 & 15 @ 706 ft. Nee Me Poo Trail northwest and southeast.  
NAD 27: 45° 45' 34.83"N      116° 25' 52.08"W  
NAD 83: 45° 45' 34.40696"N      116° 25' 55.59548"W  
UTM Zone 11: Easting 544163.1      Northing 5067490

West Between Sections 10 & 15 @ 4613 ft. Nee Me Poo Trail north and south.  
NAD 27: 45° 46' 20.36"N      116° 26' 55.76"W  
NAD 83: 45° 46' 19.93528"N      116° 26' 59.27668"W  
UTM Zone 11: Easting 542777.8      Northing 5068885.5

North Between Sections 9 & 10 @ 2162 ft. Nee Me Poo Trail northwest and southeast.  
NAD 27: 45° 46' 41.89"N      116° 27' 07.23"W  
NAD 83: 45° 46' 41.46472"N      116° 27' 10.74705"W  
UTM Zone 11: Easting 542525.5      Northing 5069548.2

West Between Sections 4 & 9 @ 2191 ft. Nee Me Poo Trail northwest and southeast.  
NAD 27: 45° 47' 12.20"N      116° 27' 38.29"W  
NAD 83: 45° 47' 11.83366"N      116° 27' 41.84585"W  
UTM Zone 11: Easting 541847.7      Northing 5070480.9

*From this point the Nee Me Poo Trail goes north to a point on the south boundary of Township 29 North, Range 1 West. Section 33 that is a common point and was recorded on page 17.*

*Township 30 North, Range 1 West*

North Between Sections 31 & 32 @ 3782 ft. Nee Me Poo Trail northwest and southeast.  
NAD 27: 45° 53' 55.76"N      116° 29' 35.61"W  
NAD 83: 45° 53' 55.32438"N      116° 29' 39.13295"W  
UTM Zone 11: Easting 539236.4      Northing 5082917

East Between Sections 30 & 31 @ 4488 ft. Nee Me Poo Trail northwest southeast.

NAD 27: 45° 54' 10.60"N      116° 29' 47.29"W  
NAD 83: 45° 54' 10.16393"N      116° 29' 50.81316"W  
UTM Zone 11: Easting 538981.8      Northing 5083373.4

*Township 30 North, Range 2 West*

West Between Sections 24 & 25 @ 2080 ft. Nee Me Poo Trail northwest and southeast

NAD 27: 45° 55' 02.39"N      116° 31' 20.01"W  
NAD 83: 45° 55' 01.95257"N      116° 31' 23.53332"W  
UTM Zone 11: Easting 536974.5      Northing 5084959.4

North Between Sections 23 & 24 @ 1320 ft. Nee Me Poo Trail northwest and southeast.

NAD 27: 45° 55' 15.62"N      116° 32' 05.48"W  
NAD 83: 45° 55' 15.18224"N      116° 32' 09.00316"W  
UTM Zone 11: Easting 535992.6      Northing 5085362

North Between Sections 22 & 23 @ 580 ft. Nee Me Poo Trail northeast and southwest.

NAD 27: 45° 55' 08.33"N      116° 33' 19.97"W  
NAD 83: 45° 55' 07.89222"N      116° 35' 23.49270"W  
UTM Zone 11: Easting 531804.5      Northing 5085114

West Between Sections 16 & 21 @ 264 ft. Nee Me Poo Trail north and south.

NAD 27: 45° 55' 54.79"N      116° 34' 38.87"W  
NAD 83: 45° 55' 54.35132"N      116° 34' 42.39241"W  
UTM Zone 11: Easting 532682.3      Northing 5086552.5

West Between Sections 9 & 16 @ 4175 ft. Nee Me Poo Trail north and south.

NAD 27: 45° 56' 46.70"N      116° 35' 34.25"W  
NAD 83: 45° 56' 46.26045"N      116° 35' 37.77214"W  
UTM Zone 11: Easting 531481.5      Northing 5088148.3

North Between Sections 8 & 9 @ 1800 ft. Nee Me Poo Trail northwest and south east.

NAD 27: 45° 57' 04.75"N      116° 35' 49.11"W  
NAD 83: 45° 57' 04.3107"N      116° 35' 52.63205"W  
UTM Zone 11: Easting 513158.8      Northing 5088703.8

West Between Sections 5 & 8 @ 4587 ft. Nee Me Poo Trail northwest and southeast.

NAD 27: 45° 57' 39.38"N      116° 36' 52.54"W  
NAD 83: 45° 57' 38.93965"N      116° 36' 56.06153"W  
UTM Zone 11: Easting 529788      Northing 5089765.8

North Between Sections 5 & 6 @ 3306 ft. Nee Me Poo Trail northwest and southeast.

NAD 27: 45° 58' 11.90"N      116° 37' 03.71"W  
NAD 83: 45° 58' 11.45919"N      116° 37' 07.23142"W  
UTM Zone 11: Easting 529542.9      Northing 5090768.3

On North Boundary of Sections 6. West Between Sections 31 & 6 @ 800 ft. Nee Me Poo Trail.

NAD 27: 45° 58' 33.29"N      116° 37' 16.12"W  
NAD 83: 45° 58' 32.84890"N      116° 37' 19.64128"W  
UTM Zone 11: Easting 529272.2      Northing 5091427.2



Nez Perce Warriors

Copied from the book Northwest Fights And Fighters.

*Township 31 North, Range 3 West*

West Between Section 24 & 25 @ 1138 ft. Nee Me Poo Trail north and south.

NAD 27: 46° 00' 16.88"N      116° 38' 35.10"W  
NAD 83: 46° 00' 16.43837"N      116° 38' 38.62031"W  
UTM Zone 11: Easting 527558.9      Northing 5094616.4

West Between Sections 13 & 12 @ 2775 ft. Nee Me Poo Trail northeast and southwest.

NAD 27: 46° 02' 01.45"N      116° 38' 58.15"W  
NAD 83: 46° 02' 01.01160"N      116° 38' 01.67047"W  
UTM Zone 11: Easting 527049      Northing 5097841.7

North on the East Boundary of Section 12 @ 1703 Nee Me Poo Trail east and west.

NAD 27: 46° 02' 18.28"N      116° 38' 18.81"W  
NAD 83: 46° 02' 17.84213"N      116° 38' 22.33093"W  
UTM Zone 11: Easting 527892.3      Northing 5098364.9

Mouth of Billy Creek, No Distance, Edge Of River, Nee Me Poo Trail Crossing.

NAD 27: 45° 59' 42.83"N      116° 38' 54.01"W  
NAD 83L 45° 59' 42.38809"N      116° 38' 57.53006"W  
UTM Zone 11: Easting 527156.8      Northing 5093563.7

*Township 31 North, Range 2 West*

Mouth Of Maloney Creek. On River Band, Nee Me Poo Trail (projected.)

NAD 27: 46° 02' 17.71"N      116° 37' 37.65"W  
NAD 83: 46° 02' 17.27213"N      116° 37' 41.17134"W  
UTM Zone 11: Easting 528777      Northing 5098351.4

North Between Sections 8 & 7 @ 4850 ft. Nee Me Poo Trail (projected.)

NAD 27: 46° 02' 51.59"N      116° 37' 03.42"W  
NAD 83: 46° 02' 51.15324"N      116° 37' 06.94175"W  
UTM Zone 11: Easting 529507.8      Northing 5099400.5

West Between Sections 5 & 8 @ 5100 ft. Nee Me Poo Trail (projected.)

NAD 27: 46° 02' 56.17"N      116° 37' 01.30"W  
NAD 83: 46° 02' 55.73339"N      116° 37' 04.82177"W  
UTM Zone 11: Easting 529552.6      Northing 5099542.1

North Between Sections 4 & 5 @ 3300 ft Nee Me Poo Trail (projected.)

NAD 27: 46° 03' 28.75"N      116° 35' 48.43"W  
NAD 83: 46° 03' 28.31456"N      116° 35' 51.95246"W  
UTM Zone 11: Easting 531113.5      Northing 5100555.4

*Township 32 North, Range 2 West*

West on the South Boundary of Section 33 @ 1500 ft. Nee Me Poo Trail (projected)

NAD 27: 46° 03' 48.02"N      116° 34' 55.48"W  
NAD 83: 46° 03' 47.58531"N      116° 34' 59.00290"W  
UTM Zone 11: Easting 532248.1      Northing 5101156

North Between Sections 34 & 33 @ 700 ft Nee Me Poo Trail (projected.)

NAD 27: 46° 03' 55.07"N      116° 34' 33.69"W  
NAD 83: 46° 03' 54.63559"N      116° 34' 37.21308"W  
UTM Zone 11: Easting 532715.1      Northing 5101376.1

North Between Sections 34 & 35 @ 4250 ft. Nee Me Poo Trail (projected.)

NAD 27: 46° 04' 30.17"N      116° 33' 19.10"W  
NAD 83: 46° 04' 29.783701"N      116° 33' 22.62359"W  
UTM Zone 11: Easting 534311.5      Northing 5102468.1

West Between Sections 26 & 35 @ 4200 ft. Nee Me Poo Trail (projected.)

NAD 27: 46° 04' 40.56"N      116° 33' 03.68"W  
NAD 83: 46° -4' 40.12742"N      116° 33' 07.20368"W  
UTM Zone 11: Easting 534627.8      Northing 5102790.6

North Between Sections 25 & 26 @ 3000ft. Nee Me Poo Trail (projected.)

NAD 27: 46° 05' 10.24"N      116° 32' 04.29"W  
NAD 83: 46° 05' 09.80869"N      116° 32' 07.81399"W  
UTM Zone 11: Easting 535911.2      Northing 5103714.1

West Between Sections 24 & 25 @ 1200 ft. Nee Me Poo Trail (projected.)

NAD 27: 46° 05' 32.87"N      116° 31' 05.75"W  
NAD 83: 46° 05' 32.43974"N      116° 31' 09.27427"W  
UTM Zone 11: Easting 537164.1      Northing 5104420

North on the West Boundary Section 24 @ 300 ft. Nee Me Poo Trail (Called by surveyor.)

NAD 27: 46° 05' 36.20"N      116° 30' 48.89"W  
NAD 83: 46° 05' 35.76993"N      116° 30' 52.41435"W  
UTM Zone 11: Easting 537525.6      Northing 5104525

*Township 32 North, Range 1 West*

North Between Sections 19 & 20 @ 5200 ft. Nee Me Poo Trail (projected.)

NAD 27: 46° 06' 24.52"N      116° 29' 34.85"W  
NAD 83: 46° 06' 24.09243"N      116° 29' 38.37419"W  
UTM Zone 11: Easting 539105.9      Northing 5106026.3

Nee Me Poo Trail Meets the Lewiston to Mountain House Wagon Road. *At this point the Nee Me Poo Trail followed the Lewiston to Mountain House Wagon Road southeast to the junction of the Florence Trail. It followed the Florence Trail for only an estimated 950 feet and then the Nee Me Poo Trail turned due south.*

NAD 27: 46° 06' 39.34"N      116° 28' 55.12"W  
NAD 83: 46° 06' 38.91369"N      116° 28' 58.64383"W  
UTM Zone 11: Easting 539955.8      Northing 5106489.2

*Township 32 North, Range 1 East*

The estimated point where the Nee Me Poo Trail left the Florence Trail follows.

NAD 27: 46° 04' 09.37"N      116° 23' 17.75"W  
NAD 83: 46° 04' 08.94324"N      116° 23' 21.27321"W  
UTM Zone 11: Easting 547233.4      Northing 5101912



*Township 31 North, Range 1 East*

West on the North Boundary of Section 6 @ 5000 ft. Nee Me Poo Trail north & southeast.

NAD 27: 46° 03' 48.87"N      116° 23' 15.14"W  
NAD 83: 46° 03' 48.44243"N      116° 23' 18.66342"W  
UTM Zone 11: Easting 547294.3      Northing 5101279.7

West Between Sections 6 & 7 @ 1000 ft. Nee Me Poo Trail southeast & northwest.

NAD 27: 46° 02' 55.59"N      116° 22' 18.35"W  
NAD 83: 46° 02' 55.16110"N      116° 22' 21.87376"W  
UTM Zone 11: Easting 548527.4      Northing 5099644.8

North Between Sections 7 & 8 @ 2600 ft. Nee Me Poo Trail southeast & northwest.

NAD 27: 46° 02' 29.54"N      116° 22' 03.98"W  
NAD 83: 46° 02' 29.11023"N      116° 22' 07.50400"W  
UTM Zone 11: Easting 548842.5      Northing 5098843.2

West Between Sections 8 & 17 @ 4700 ft. Nee Me Poo Trail easterly.

NAD 27: 46° 02' 03.76"N      116° 21' 54.75"W  
NAD 83: 46° 02' 03.32929"N      116° 21' 58.27427"W  
UTM Zone 11: Easting 549047.3      Northing 5098049.1



Looking Up Cottonwood Creek From Dizzy Head.  
A Cindy Schacher Photograph.

North Between Sections 15 & 16 @ 4200 ft. Nee Me Poo Trail east & west.

NAD 27: 46° 01' 53.08"N      116° 19' 33.40"W  
NAD 83: 46° 01' 52.65101"N      116° 19' 36.92392"W  
UTM Zone 11: Easting 552088.5      Northing 5097744.5

North Between Sections 14 & 15 @ 4500 ft. Nee Me Poo Trail east & west.

NAD 27: 46° 01' 55.81"N      116° 18' 18.36"W  
NAD 83: 46° 01' 55.38228"N      116° 18' 21.88363"W  
UTM Zone 11: Easting 553700.8      Northing 5097842.6

West Between Sections 11 & 14 @ 200 ft. Nee Me Poo Trail east & west.

NAD 27: 46° 02' 03.51"N      116° 17' 06.71"W  
NAD 83: 46° 02' 03.08373"N      116° 17' 10.23327"W  
UTM Zone 11: Easting 555238.9      Northing 5098093.9

West Between Sections 12 & 13 @ 4700 ft. Nee Me Poo Trail east & west.

NAD 27: 46° 02' 03.47"N      116° 16' 54.84"W  
NAD 83: 46° 02' 03.04391"N      116° 16' 58.36323"W  
UTM Zone 11: Easting 555494.1      Northing 5098095

North on the East Boundary of Section 13 @ 5050 ft. Nee Me Poo Trail northeast & southwest.

NAD 27: 46° 02' 01.49"N      116° 15' 48.31"W  
NAD 83: 46° 02' 01.06485"N      116° 15' 51.83303"W  
UTM Zone 11: Easting 556924.8      Northing 5098046.9

*Township 31 North, Range 2 East*

East Between Sections 7 & 18 @ 200 ft. Nee Me Poo Trail northeast & southwest.

NAD 27: 46° 02' 03.79"N      116° 15' 45.58"W  
NAD 83: 46° 02' 03.36499"N      116° 15' 49.10299"W  
UTM Zone 11: Easting 556982.8      Northing 5098118.5

West Between Sections 6 & 7 @ 2000 ft. Nee Me Poo Trail northeast & southwest.

NAD 27: 46° 02' 56.06"N      116° 15' 01.93"W  
NAD 83: 46° 02' 55.63801"N      116° 15' 05.45198"W  
UTM Zone 11: Easting 557906      Northing 5099740.5

North Between Sections 5 & 6 @ 3300 ft. Nee Me Poo Trail northeast & southwest.

NAD 27: 46° 03' 25.92"N      116° 14' 33.54"W  
NAD 83: 46° 03' 25.50009"N      116° 14' 37.06123"W  
UTM Zone 11: Easting 558507.3      Northing 5100667.9

*Township 32 North, Range 2 East*

West on the South Boundary of Section 32 @ 2600 ft. Nee Me Poo Trail northeast & southwest

NAD 27: 46° 03' 47.91"N      116° 13' 54.51"W  
NAD 83: 46° 03' 47.49211"N      116° 13' 58.03050"W  
UTM Zone 11: Easting 559339.4      Northing 5101354.7

North Between Sections 32 & 33 @ 2500 ft. Nee Me Poo Trail northeast & southwest.

NAD 27: 46° 04' 12.69"N      116° 13' 17.59"W  
NAD 83: 46° 04' 12.27419"N      116° 13' 21.10976"W  
UTM Zone 11: Easting 560125.2      Northing 5102127.3

West Between Sections 28 & 33 @ 1800 ft. Nee Me Poo Trail northeast & southwest.

NAD 27: 46° 04' 40.58"N      116° 12' 27.68"W  
NAD 83: 46° 04' 40.16673"N      116° 12' 31.19885"W  
UTM Zone 11: Easting 561188.8      Northing 5102998.7

North Between Sections 27 & 28 @ 1300 ft. Nee Me Poo Trail northeast & southwest.

NAD 27: 46° 04' 53.17"N      116° 12' 02.29"W  
NAD 83: 46° 04' 52.75795"N      116° 12' 05.80841"W  
UTM Zone 11: Easting 561730.2      Northing 5103392.8

North Between Sections 26 & 27 @ 4000 ft. Nee Me Poo Trail northeast & south west.

NAD 27: 46° 05' 19.85"N      116° 10' 46.10"W  
NAD 83: 46° 05' 19.44111"N      116° 10' 49.61730"W  
UTM Zone 11: Easting 563358.1      Northing 5103392.8

West Between Sections 23 & 26 @ 2200 ft. Nee Me Poo Trail northeast & southwest.

*At this point the Nee Me Poo joins a trail from Red Rock Canyon to Kamiah.*

NAD 27: 46° 05' 32.19"N      116° 10' 01.86"W  
NAD 83: 46° 05' 31.78280"N      116° 10' 05.37671"W  
UTM Zone 11: Easting 564304.2      Northing 5104623.7

North on the East Boundary of Section 24 @ 600 ft. Nee Me Poo Trail east & west.

*From this point the Nee Me Poo Trail only follows the Kamiah Trail for some 2000 feet before turning south-southeast into Cottonwood Creek Canyon.*

NAD 27: 46° 05' 37.74"N      116° 08' 15.11"W  
NAD 83: 46° 05' 37.33581"N      116° 08' 18.62566"W  
UTM Zone 11: Easting 566594.6      Northing 5104819.5

*Township 32 North, Range 3 East*

West Between Sections 19 & 30 @ 2500 ft. Nee Me Poo Trail northwest & southeast

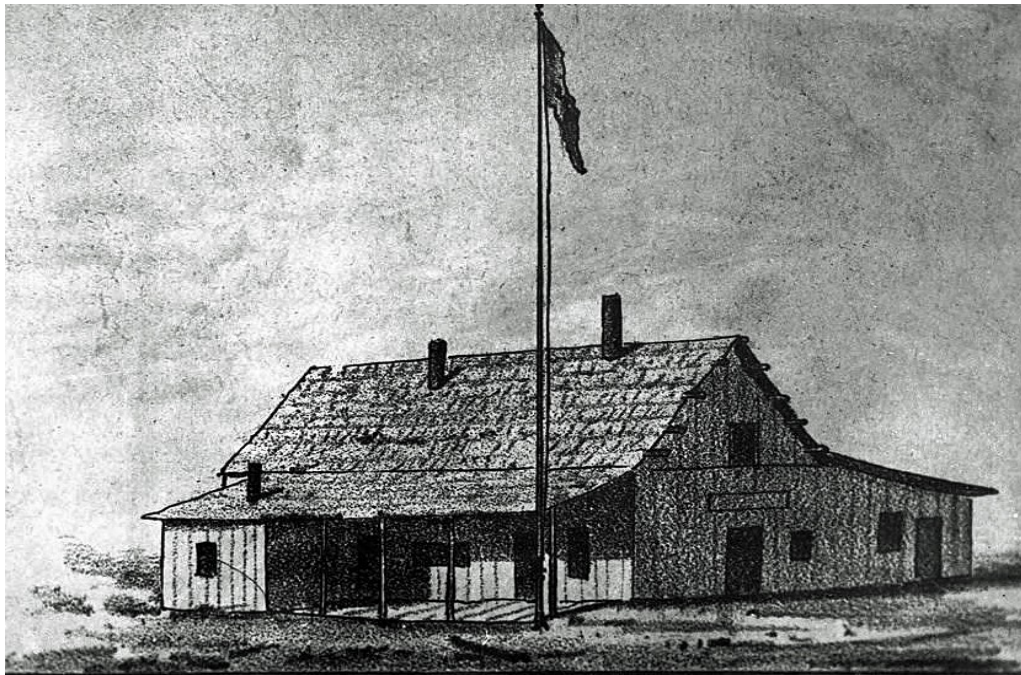
NAD 27: 46° 05' 31.52"N      116° 07' 38.30"W  
NAD 83: 46° 05' 31.11650"N      116° 07' 41.81542"W  
UTM Zone 11: Easting 567387.1      Northing 5104636.2

North Between Sections 29 & 30 @ 2850 ft. Nee Me Poo Trail northwest & southeast.  
NAD 27: 46° 05' 07.67"N      116° 07' 03.13"W  
NAD 83: 46° 05' 07.26640"N      116° 07' 06.64545"W  
UTM Zone 11: Easting 568150.5      Northing 5104636.4

West Between Sections 29 & 32 @ 3500 ft. Nee Me Poo Trail northwest & southeast.  
NAD 27: 46° 04' 39.49"N      116° 06' 38.26"W  
NAD 83: 46° 04' 39.08586"N      116° 06' 41.77564"W  
UTM Zone 11: Easting 568694.3      Northing 5103044.6

North Between Sections 32 & 33 @ 2500 ft. Nee Me Poo Trail northwest & northeast.  
NAD 27: 46° 04' 12.29"N      116° 05' 48.72"W  
NAD 83: 46° 04' 11.88602"N      116° 05' 52.23558"W  
UTM Zone 11: Easting 569767.9      Northing 5102217.1

West Between Sections 28 & 33 @ 1400 ft. Nee Me Poo Trail northeast & southwest.  
NAD 27: 46° 04' 39.00"N      116° 04' 53.85"W  
NAD 83: 46° 04' 38.59858"N      116° 04' 57.36468"W  
UTM Zone 11: Easting 570937.1      Northing 5103055



First Republican Convention Held At L. P. Brown Hotel, Mount Idaho 1863.  
Also Place Where Settlers & Army Congregated During Nez Perce War Of 1877.  
Courtesy of University of Idaho Library, Special Collections & Archives PG-5-056-1a.

West Between Sections 27 & 28 @ 500 ft. Nee Me Poo Trail northeast & southwest.

NAD 27: 46° 04' 43.57"N      116° 04' 33.94"W  
NAD 83: 46° 04' 43.16929"N      116° 04' 37.45443"W  
UTM Zone 11: Easting 571363.1      Northing 510320`

South Between Sections 26 & 27 @ 300 ft. Nee Me Poo Trail east & west.

NAD 27: 46° 05' 27.98"N      116° 03' 19.89"W  
NAD 83: 46° 05' 27.58307"N      116° 03' 23.40313"W  
UTM Zone 11: Easting 572937.7      Northing 5104590.4

North Between Sections 23 & 24 @ 750 ft. Nee Me Poo Trail east & west.

NAD 27: 46° 05' 37.85"N      116° 02' 03.33"W  
NAD 83: 46° 05' 37.74528"N      116° 02' 06.84237"W  
UTM Zone 11: Easting 574577.6      Northing 5104923.8

North On The East Boundary of Section 24 North @ 300 ft. Nee Me Poo Trail east & west.

NAD 27: 46° 05' 33/14"N      116° 00' 48.91"W  
NAD 83: 46° 05' 32.74721"N      116° 00' 52.42170"W  
UTM Zone 11: Easting 576177.5      Northing 5104789.1

West Between sections 13 & 24 @ 2000 ft. Nee Me Poo Trail north & south.

NAD 27: 46° 06' 22.56"N      116° 01' 16.44"W  
NAD 83: 46° 06' 22.16851"N      116° 01' 19.95128"W  
UTM Zone 11: Easting 575567.6      Northing 5106307.2

West Between Sections 12 & 13 @ 4650 ft. Nee Me Poo Trail northeast & southwest.

NAD 27: 46° 07' 14.78"N      116° 01' 53.92"W  
NAD 83: 46° 07' 14.38968"N      116° 01' 57.43090"W  
UTM Zone 11: Easting 574743.4      Northing 5107909

West Between Sections 1 & 12 @3500 ft. Nee Me Poo Trail northwest & southeast.

NAD 27: 46° 08' 08.23"N      116° 01' 37.05"W  
NAD 83: 46° 08' 07.84229"N      116° 01' 40.56003"W  
UTM Zone 11: Easting 575085.3      Northing 5109563.2

*Township 32 North, Range 4 East*

West Between Section 29 & 32 @ 1000 ft. Nee Me Poo & South Nez Perce Trail.

*Also Location of Nez Perce Camp At Clearwater Battle.*

NAD 27: 46° 04' 37.28"N      115° 58' 37.37"W  
NAD 83: 46° 04' 36.88946"N      115° 58' 40.88068"W  
UTM Zone 11: Easting 579024.2      Northing 5103100.8

North Between Sections 29 & 30 @ 3600 ft. Nee Me Poo Trail northwest & southeast.

NAD 27: 46° 05' 12.70"N      115° 59' 37.75"W  
NAD 83: 46° 05' 12.30851"N      115° 59' 41.26118"W  
UTM Zone 11: Easting 577713.5      Northing 5104177.5

*Township 33 North, Range 3 East*

East on the South Boundary of Section 36 @ 800 ft. Nee Me Poo Trail northwest & southeast.

NAD 27: 46° 09' 02.77"N      116° 01' 49.94"W  
NAD 83: 46° 09' 02.38419"N      116° 01' 53.44940"W  
UTM Zone 11: Easting 574788.2      Northing 5111243.2

North Between Sections 35 & 36 @ 2400 ft. Nee Me Poo Trail northwest & southeast.

NAD 27: 46° 09' 26.86"N      116° 01' 59.51"W  
NAD 83: 46° 09' 26.47494"N      116° 02' 03.01915"W  
UTM Zone 11: Easting 574573.9      Northing 5111984.2

West Between Sections 26 & 35 @ 2000 ft. Nee Me Poo Trail north & south.

NAD 27: 46° 09' 54.39"N      116° 02' 27.93"W  
NAD 83: 46° 09' 54.00537"N      116° 02' 31.43901"W  
UTM Zone 11: Easting 573954.1      Northing 5112826.5

West Between sections 23 & 26 @ 2400 ft. Nee Me Poo Trail north & south.

*Nee Me Poo Trail joins the Red Rock to Kamiah Trail at this point.*

NAD 27: 46° 10' 47.72"N      116° 02' 33.44"W  
NAD 83: 46° 10' 47.33742"N      116° 02' 36.94832"W  
UTM Zone 11: Easting 573816.1      Northing 5114471.1

West Between Sections 14 & 23 @ 800 ft. Nee Me Poo Trail northeast & southwest.

NAD 27: 46° 11' 40.07"N      116° 02' 11.05"W  
NAD 83L 46° 11' 39.69012"N      116° 02' 14.55743"W  
UTM Zone 11: Easting 574276.6      Northing 5116092.7

North Between Sections 13 & 14 @ 2400 ft. Nee Me Poo Trail northeast & southwest.

NAD 27: 46° 12' 03.65"N      116° 02' 00.22"W  
NAD 83: 46° 12' 03.27134"N      116° 02' 03.72702"W  
UTM Zone 11: Easting 574499.8      Northing 5116823.4

West Between Sections 12 & 13 @ 4000 ft. Nee Me Poo Trail north & south.

NAD 27: 46° 12' 33.48"N      116° 01' 42.97"W  
NAD 83: 46° 12' 33.10298"N      116° 01' 46.47649"W  
UTM Zone 11: Easting 574858.3      Northing 5117748.6



Junction of the Nee Me Poo Trail and the Lewis & Clark Return Trail. *At his point the Nee Me Poo Trail joins the Lewis & Clark, 1806 Return Trail and follows the L & C Trail and the Lolo trail to the Musselshell Ranger Station where this assessment ends.*

NAD 27: 46° 13' 03.67"N      116° 01' 42/43"W  
NAD 83: 46° 13' 03.29422      116° 01' 45.93607"W  
UTM Zone 11: Easting 574858.5      Northing 5118680.6

#### COORDINATES FOR POINTS OF INTEREST

Area on Deer Creek where Nez Perce Camped After the White Bird Battle.

NAD 27: 45° 41' 19.94"N      116° 20' 56.91"W  
NAD 83: 45° 41' 19.52515"N      116° 21' 00.41689"W  
UTM Zone 11: Easting 505603.4      Northing 5059672.6

Area on Lawyer Creek where Nez Perce Camped After Billy Creek Crossing.

*This is the same camping area pointed out in Ordway's Fishing Expedition by Steve Russell. The ridge near the camp has many basalt outcroppings and fits the description by Yellow Wolf. A review of the area using Google Earth indicates the soils are thin and grass like vegetation is stunted and appears to be a lot like the area where I spent my childhood, and where Native American women came to dig Kous. In addition it is some 1.4 miles north of the place where Army-scout Blewett was killed and well within hearing distance, as described by Yellow Wolf.<sup>28</sup>*

NAD 27: 46° 07' 26.11"N      116° 27' 26.53"W  
NAD 83: 46° 07' 25.68709"N      116° 27' 30.05287"W  
UTM Zone 11: Easting 514847.7      Northing 5107945.5

Location where volunteers led by Lieutenant L. B. Randall took up positions and fought the Nez Perce on July 5, 1877. *This area is slightly higher than the surrounding prairie and fits the description of the area as found in a minimum of five different texts and is some two miles east-southeast of Cottonwood. This writer erred when recording this spot in the Lewiston to Mountain House Wagon Road Assessment, and those coordinates should be deleted from all GIS programs.<sup>29</sup>*

NAD 27: 46° 01' 44.09"N      116° 19' 06.46"W  
NAD 83: 46° 01' 43.66104"N      116° 19' 09.98395"W  
UTM Zone 11: Easting 552654.1      Northing 5099323.7

Nez Perce Camp At Yellow Bull Spring, July 1877.

NAD 27: 46° 05' 53.99"N      116° 09' 49.26  
NAD 83: 46° 05' 53.58407"N      116° 09' 52.77626"W  
UTM Zone 11: Easting 564567.7      Northing 5105299.4

28 Yellow Wolf, His Own Story, L. V. McWhorter, Caxton Printers,Ltd, 186, Pages 69 & 70.

29 Hear Me My Chiefs: Nez Perce Legend And History, L. V. McWhorter, 1952, Pages 289 to 291.

Too-Lah's Grave North At Yellow Bull Spring.

NAD 27: 46° 06' 04.12"N      116° 09' 53.35"W  
NAD 83: 46° 06' 03.71441    116° 09' 56.86614"W  
UTM Zone 11: Easting 564476.6    Northing 5105611.1



Nez Perce Rock Breastworks, Clearwater Battlefield.  
A Cindy Schacher Photograph.

Rifle Pits, Occupied by the Army at the Clearwater Battle

Position on the section line:

NAD 27: 46° 04' 36.81"N      115° 57' 14.92 "W  
NAD 83: 46° 04' 36.42267"N    115° 57' 18. 42937"W  
UTM Zone 11: Easting 580795.4    Northing 5103109.4

Northeast end of rifle pit:

NAD 27: 46° 04' 37.18"N      115° 57'12.26"W  
NAD 83: 46° 04' 36.79279"N    115° 57' 15.76932"W  
UTM Zone 11: Easting 580852.4    Northing 5103092"W

Southwest end of Rifle Pits:

NAD 27: 46° 04' 36.31"N      115° 57' 19.54"W  
NAD 83: 46° 04' 35.92247"N    115° 57' 23.04945"W  
UTM Zone 11: Easting 580696.3    Northing 5103092.7

Indian rock breastworks, 4 feet high and occupied by the Nez Perce.

Position on Section Line:

NAD 27: 46° 04' 16.47"N	115° 57' 08.54"W
NAD 83: 46° 04' 16.08216"N	115° 57' 12.04948"W
UTMM Zone 11: Easting 580940.7	Northing 5102483.5

Northeast end of breastworks:

NAD 27: 46° 04' 16.60"N	115° 57' 06.41"W
NAD 83: 46° 04' 16.21225"N	115° 57' 09.91945"W
UTM Zone 11: Easting 580986.4	Northing 5102488.1

Southwest end of breastworks:

NAD 27: 46° 04' 16.10"N	115° 57' 12.44"W
NAD 83: 46° 04' 15.7119"N	115° 57' 15.94955"W
UTM Zone 11: Easting 580857	Northing 5102471

### *INTEGRITY*

The Nee Me Poo Trail has been heavily impacted by civilizations during the past 140 years. Farming, road constructions, logging, stock grazing, and everyday human activities have destroyed most of the original trail tread. However, sections of the trail may still exist, in Oregon, from Dug Bar to the mouth of Dug Creek. In Idaho the trail may still exist from Billy Creek Crossing on the Salmon River to the top of break land west of Cottonwood Butte. There is also a slight chance the trail may still exist in Cottonwood Creek Canyon, as there appears to be some kind of trail system in that canyon.

On the Joseph Plain and near Boles, roads appear to follow the original trail in several places. Some original tread could still exist on federal & private land in Township 27 North, Range 1 East and in Township 28N, Range 1 West. In the late 1980's this writer walked the Boise Trail from Pittsburgh Saddle to just south of Camp Howard Cow Camp and that portion of the original trail system still existed. Prehistoric sites were also recorded in that area, proving use by Native Americans.

### *SIGNIFICANCE*

The numerous sections of trail that make up this route were being used by the Nez Perce and other tribes long before the appearance of Euro-Americans in early 1800's. The trail in its entirety was only used once, during the summer of 1877, when the Nez Perce were fleeing from the U.S. Army, which apparently was brought on by circumstances out of their control. For example:

- (1) In 1861 gold was discovered in the Pierce, Elk City and Florence areas and white men began pouring into the Nez Perce Country. The whites were not allowed by treaty to be in this country, but the U.S. Army refused to enforce that Treaty.

- (2) In 1863, Chief Lawyer, who had converted to Christianity, signed a new treaty which ceded most of the treaty land to the U.S. Government. The Nez Perce living in Oregon & Washington were not aware of this dealing and refused to concede the land they had lived on for centuries.
- (3) June 25 & 26, 1876, the Battle of Greasy Grass took place at the Little Big Horn River and five companies of the 7<sup>th</sup> Calvary were annihilated. Custer and 268 of his men lost their lives in this fight, which resulted in the Army being pressured to force the Nez Perce onto the greatly reduced reservation.
- (4) Early in May 1877 General Howard met with the numerous tribal leaders at Lapwai, and after realizing the Nez Perce were not willing to give up their ancestral land, ordered them to move to the Lapwai reservation.

All these events occurred over several years, leading to the Nez Perce War, and the fleeing of the Nez Perce over the Nee Me Poo Trail. This history and the trail are reminiscent of the Cherokee and the Trail of Tears. This route is very significant to the Nez Perce People, and to the nation as a whole, and was listed as a National Historic Trail in 1986.

#### *RECOMENDATIONS*

It has been determined that right-of-way along the trail can be acquired under the Nation Trails System Act (NTSA), as amended through P.L. 111-11, March 30, 2009. Right-of way acquisition is currently underway. Meanwhile the Idaho County Historic Preservation Commission should plan an out year project that will ground proof certain sections of the trail, noted in this assessment. In addition, this assessment should be shared with Sandra Brancheau McFarland, Administrator for the Nez Perce Historic Trail.

It appears from observations done using Google Earth that portions of the trail are suitable for mountain bikes on UN-roaded private and federal land, making right-of-way acquisition even more important for the management of the entire trail.

#### *REFERENCES*

- Vallier, Tracy L.:  
The Permian and Triassic Seven Devils Group, Western Idaho and Northeastern,  
Oregon.
- Wagner, Warren R.:  
Pamphlet #74, University of Idaho-1944.
- Castelin  
Idaho Geological Report-1976.
- Hahn, Thomas W.:  
Soil Survey of Lewis and Nez Perce Counties, Natural Resources Conservation Services.

Defenbach, Byron:  
IDAHO-The Place And Its People, Volume #1, The American Historical Society.

McWhorter L.V.  
Yellow Wolf, His Own Story, Caxton Press-1986.

Parker, Rev. Samuel:  
Parker's Exploration Tour, Beyond The Rocky Mountains.

Western Historic Publishing Company-1903  
History Of North Idaho.

BLM-GLO Web Page.  
Records & Survey Plats.

Brady, Cyrus Townsend:  
Northwest Fights and Fighters, Doubleday, Doron & Company-1928.

Elsensohn, Freda, Sister M.:  
Pioneer Days In Idaho County, Volume #1.

McWhorter, L.V.:  
Hear Me My Chiefs, Nez Perce Legend & History-1952 (Digital Version).

*U.S.G.S QUADDRANGLE MAP LIST*

Boles

Cactus Mountain

Cottonwood

Fenn

Grave Point

Hoover Point

Joseph

Kamiah

Keuterville

Moughmer Point

Nez Perce S.W.

Nez Perce S.E.

Pierce

Rattlesnake Point

Slate Creek

Stites

Weippe South

West Lake

White Bird

Wolf Creek

Woodland



Two Adults & A Child Standing In Front Of Railroad Tracks-1937.

Courtesy of the University of Idaho Library, Special Collections & Archives, PG-5-100-21.