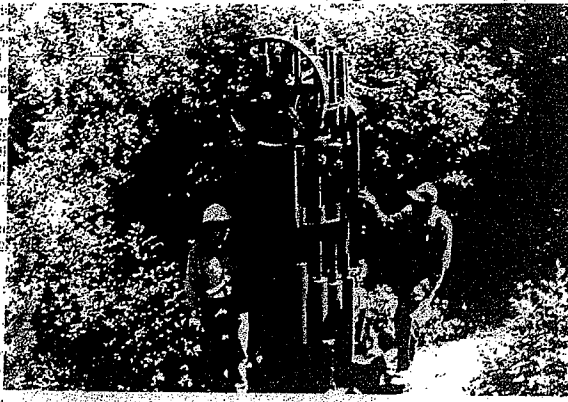


# Idaho County Mining



**LARGE STAMP MILL** in the Florence area was used on the Gold Bug mine in Florence. The huge mill weighs about 18-20 tons, and has 14 stamps. This stamp mill is believed to be the only one left of this type in the world. It ground 100,000 tons of ore in one run according to Foster Morgan, owner. At a later time, it was said to have taken out \$250,000 in gold from this mine. It was last run in 1940. The ore at that time assayed out at \$84 per ton at the mine. Each of the rods in the mill weigh 500 pounds, and was operated in a rotary fashion, with a cam in the middle of the apparatus. The mill was taken into Florence at the turn of the century by Jim Ward, Grangeville, according to Foster Morgan, standing here on the right, while Jim Wassmuth is on the left. Photo dated 1975.—Photo courtesy Jack Olson.

(Continued from previous page)  
Production Company started development operations late in the summer of 1935.

Several small operations were working at lode and placer holdings in this district.

"The dry season was a handicap to mining all over the state.

**Edwardsburg District**

"The forest service was active in building roads which will be of value in the development of this district.

"An airport is located at Big Creek Headquarters near Edwardsburg that facilitates quicker service for emergency calls and winter transportation.

Authorities claim this section has possibilities of becoming a potential and permanent gold producer as soon as the development stage is passed.

"Activity was very much in evidence near Elk Summit and Profile Gap. Edwardsburg was the distributing center.

"The Smith Creek placers, with a crew of thirty men, are carrying out plans to work their property in a big way. During the past year equipment and machinery was installed, entailing

considerable construction work.

"It was rumored that some activity was noticed at the Golden Hand, this company did not file a report for 1935 with this office. Many prospectors were active in this vicinity and development was under way at numerous properties throughout the year."

**1936**  
We find in this year, that gold output was 935 ounces less than in the previous year.

Campbell says, "More than 1,000 men were actively engaged in mining within the confines of Idaho County during the past year."

**Ten Mile District**

"The Lone Pine, at Golden, owned and operated by F.O. Miller of Clarkston, Wash., was operated at the capacity of the 40-ton flotation mill until a shortage of water to the 250 h.p. hydroelectric plant slowed down operations. With a crew of 35 men an intelligent development and production program was carried out. Modern haulage equipment was installed last year."

The New York and the Buffalo Mining companies

were active and enjoyed a fair margin of profit.

"The Clearwater Mining Company installed a 20-ton mill, hydroelectric power plant, new administration building and general camp improvements while further development of the property for future production was carried on during the year."

"The Idaho Corporation, near Golden, is opened up on several horizons. Frederick E. Snook, Golden, president and manager, plans to extend the lower tunnel a distance of 600 feet during the year 1937.

"The Key, Tippe, and Moose Creek placers were operated as long as the water lasted.

"It is reported that Walter Hill of Grangeville has taken a lease and option on the old Montana Mine and preparing to develop property.

"Annual labor was performed at the Gilt Edge Mine Corp.

"At the Four Mile property a five-foot vein of milling ore was opened up and a 20 ton mill erected.

"The Center Star was leased and bonded to Lewisston people who plan to install new mining and milling equipment.

"The old Imogene property, owned and operated by a man named Griffiths, has been operated with fair profit the last few years and an extensive

development program is under way.

"The Morgan property, adjoining the Imogene, was developed to some extent.

"The Black Bird mine was located, and is owned by V.P. Roe, Jess Reid and Jim Stickland. A vein of free milling ore three to five feet wide was opened up. The ore is transferred to a small two-stamp mill by tram for a distance of 1,000 feet. The claim is 500 feet above the river near the Lone Pine power plant. It is reported that one ounce of gold is recovered from every ton milled.

**Dixie District**

"The Dixie Comstock Gold Mining Company, W.H. Horobin, Seattle, Wash., president, completed a 50 ton mill, added new equipment and with a crew of 20 men carried on a development and production program until late in the fall of 1936.

"Mammoth Mine Corporation was leased from R.S. Erb, president and R.G. Bailey, secretary, both of Lewiston, by the Bunker Hill and Sullivan Mining and Concentrating Company. An average of 16 men are employed under the supervision of Ed. Davern. Camp buildings were erected and a considerable amount of development work accomplished during the year. Supplies have been freighted in to last until spring and work will be carried on during the winter months.

"Loyalty Mines, Inc. employed five men at the property on development and installed Diesel engine, electrical equipment and cyanide plant.

"The placer operation at Dixie, owned by Spokane interests enjoyed another very successful season. The plant consists of a power shovel and a washing plant that can be moved on skids.

"The War Eagle operated throughout the season and shipments were made from their 25-ton mill.

"The North Star carried on a program of development.

"The Robinson Bros. erected a mill and operated a property known as Dixie Dike at a fair margin of profit the last two years.

"Stanley Litchfield worked a property with success on American River.

**Elk River District**

"Elk City Gold Mines, Inc., established a camp and installed mining equipment at the Montgomery Mine and expect to operate all winter with a crew of 10 men. Supplies are in to last until

the roads are open in June. Some high grade will be hauled over the snow to the highway a distance of six miles. Three hundred fifty-four feet of development work was completed during 1936.

"Mt. Vernon Gold Mining Company operated a two-foot all-steel pontoon dredge on placer ground in Deadwood Gulch during the mining season. Dave E. Henderson, Mt. Vernon, Washington, is president and manager.

"The Pilot Knob Gold Corporation employed 18 men in the development of the Black Lady Group and operating the 25-ton cyanide plant. R.W. Bellows president, Spokane, Wash., president, R.R. Bellows, general superintendent at the mine.

"Sultan Gold Mining Company, H.C. Mowery, Wallace, President, is sinking on a two foot vein, stated to bear high grade gold and silver values. The company recently installed a mill, which uses amalgamation and concentrating tables in its recovery plant and is planning to install flotation cells. Jean M. Peters, Elk City is consulting engineer and manager.

"The Mary K. (Black Pine,) Mother Lode Gold Point and Mountain Boy were worked to some extent.

"The Almanace was developed on the bottom level with a crew of 3 men. The property is located about five miles from Elk City, near the old Buster.

**Orogrande Dist.**

"If present work continues at the Gold Master Consolidated Mining Company, Inc. a 100-ton milling plant will be installed in the spring. About ten men have been employed for the past year at the property on development, camp construction and installation of mining machinery. The pay streak was cut by the 800 foot lower tunnel 250 feet under the old shaft. Arthur A. Whaley, Peyton Building, Spokane, is president and Bill Early, Orogrande, superintendent.

"Una Mine Company installed a 65-horsepower marine boiler to be used to run a four-drill compressor. The mine is being equipped for production. Edward Conley, Orogrande, is manager.

"C. Clinkenbeard, Spokane, Wash., manager and W.T. Clinkenbeard, Orogrande superintendent,

operated a placer known as the Lucky Five Mining Company. The FRC division

of mining loans have considered this company for a loan of \$20,000.

"Orogrande-Frisco Gold Mines, Inc., J.R. Moore. (Continued on following page)